

CERTIFICATE OF LOCATION OF GOVERNMENT CORNER

County of Anoka

State of Minnesota

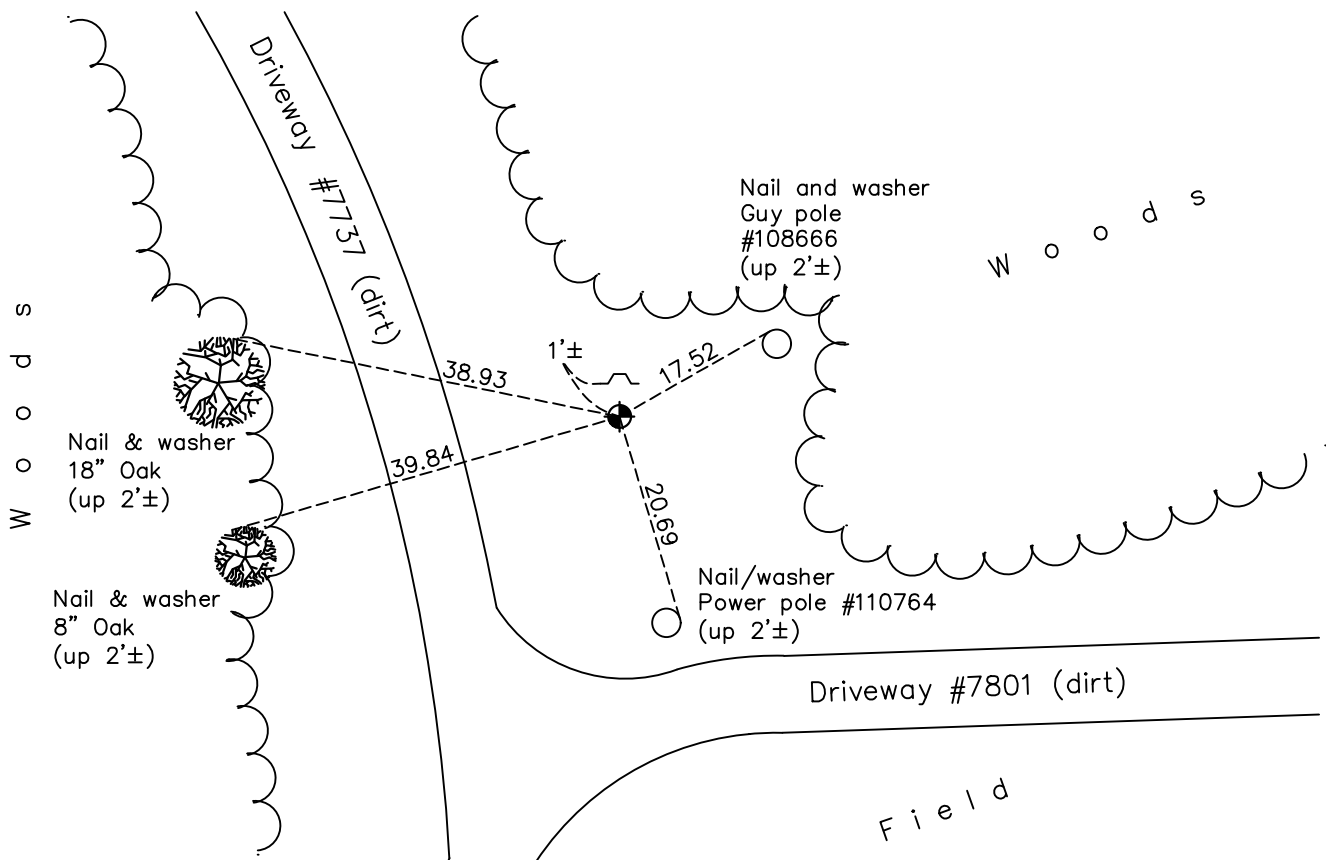
North 1/4 Corner of Sec. 10 Township 33 Range 22

On the 3rd day of July, 1974, the described corner was evidenced by area resurvey

and to perpetuate the location of said corner, at the exact location thereof, a permanent marker was placed consisting of a cast iron monument with a sign and post on the north side

AND on the 17th day of December, 2021, said permanent marker was found down 0.2'± and the ties were updated

Updated reference ties are as shown below.



Revision Date
03/16/22

N.A.D. 1983 Coordinates
 (1996 Adjustment)

County Project Coordinates	
Northing	<u>222060.4987</u>
Easting	<u>550565.9888</u>
Date	<u>1/31/05</u>

I hereby certify that this United States public land survey monument record is correct and complete to the best of my knowledge and belief.

David Zieglmeier Date 12/11/23

David M. Zieglmeier, Anoka County Surveyor
 Minnesota License Number 46179

HISTORY OF GOVERNMENT CORNER

Page No. 27

County of Anoka

State of Minnesota

North 1/4 Corner of Sec. 10 Township 33 Range 22

CORNER HISTORY:

July 3, 1974 - Set cast iron monument flush using area resurvey. Established ties to monument.

July 22, 1975 - Found cast iron monument and updated ties.

July 19, 1978 - Found cast iron monument and updated ties.

August 17, 1981 - Found cast iron monument and updated ties.

December 26, 1990 - Found cast iron monument and updated ties.

June 30, 1993 - Found cast iron monument and updated ties.

May 11, 2004 - Found cast iron monument and updated ties.

January 31, 2005 - Established NAD 1983 (1996 adj.) Anoka County project coordinates by static GPS methods.

November 2013 - Found cast iron monument. Verified position by VRS GPS methods. Updated ties.

January 25, 2019 - Found cast iron monument down 0.2'± and updated ties.

December 17, 2021 - Found cast iron monument down 0.2'±. Verified position by VRS GPS methods. Updated ties.