

CERTIFICATE OF LOCATION OF GOVERNMENT CORNER

County of Anoka

State of Minnesota

Witness Corner of Sec. 9 Township 33 Range 22

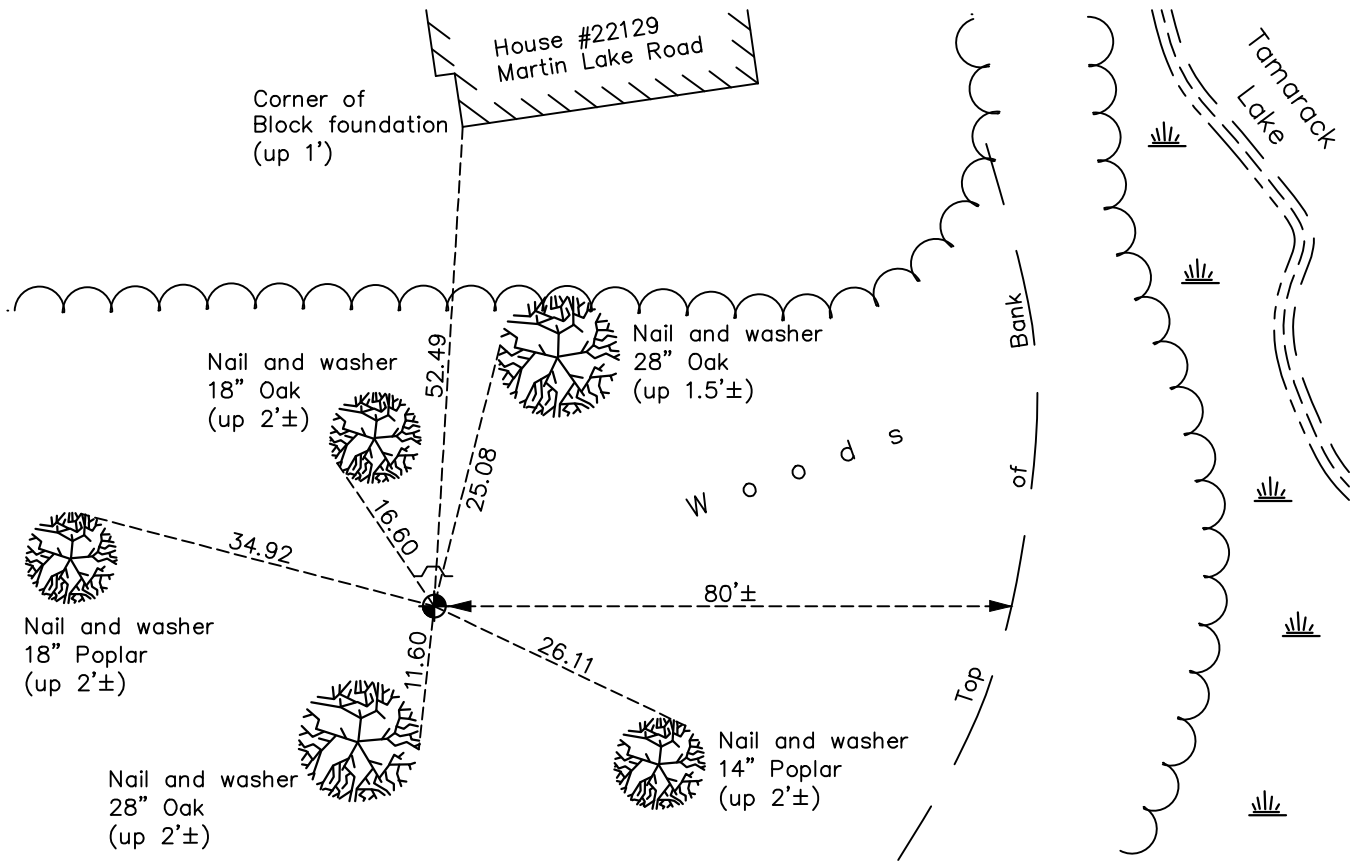
(on north line of NE 1/4)

On the 1st day of April, 1971, the described corner was evidenced by area resurvey

and to perpetuate the location of said corner, at the exact location thereof, a permanent marker was placed consisting of a cast iron monument with a sign and post on the north side

AND on the 14th day of January, 2022, said permanent marker was found down 0.1'± and the ties were updated

Updated reference ties are as shown below.



N
W ANOKA COUNTY SURVEYOR E
S

Revision Date
03/17/22

N.A.D. 1983 Coordinates
(1996 Adjustment)

County Project Coordinates	
Northing	<u>222084.0626</u>
Easting	<u>546484.7568</u>
Date	<u>2/09/05</u>

I hereby certify that this United States public land survey monument record is correct and complete to the best of my knowledge and belief.

David Zieglsmeier Date 12/11/23

David M. Zieglsmeier, Anoka County Surveyor
Minnesota License Number 46179

HISTORY OF GOVERNMENT CORNER

Page No. 28

County of Anoka

State of Minnesota

Witness Corner of Sec. 9 Township 33 Range 22
(on north line of NE 1/4)

CORNER HISTORY:

April 1, 1971 - Set 1/2" iron pipe using area resurvey. Established ties to iron pipe.

July 2, 1971 - Found 1/2" iron pipe and updated ties.

October 1971 - Found 1/2" iron pipe and replaced with a cast iron monument flush. Updated ties.

July 23, 1975 - Found cast iron monument and updated ties.

July 20, 1978 - Found cast iron monument and updated ties.

August 26, 1981 - Found cast iron monument and updated ties.

December 26, 1990 - Found cast iron monument and updated ties.

June 30, 1993 - Found cast iron monument and updated ties.

February 9, 2005 - Established NAD 1983 (1996 adj.) Anoka County project coordinates by static GPS methods.

November 25, 2013 - Found cast iron monument and updated ties.

January 14, 2022 - Found cast iron monument down 0.1'±. Verified position by VRS GPS methods. Updated ties.