

CERTIFICATE OF LOCATION OF GOVERNMENT CORNER

County of Anoka

State of Minnesota

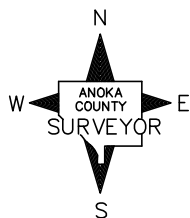
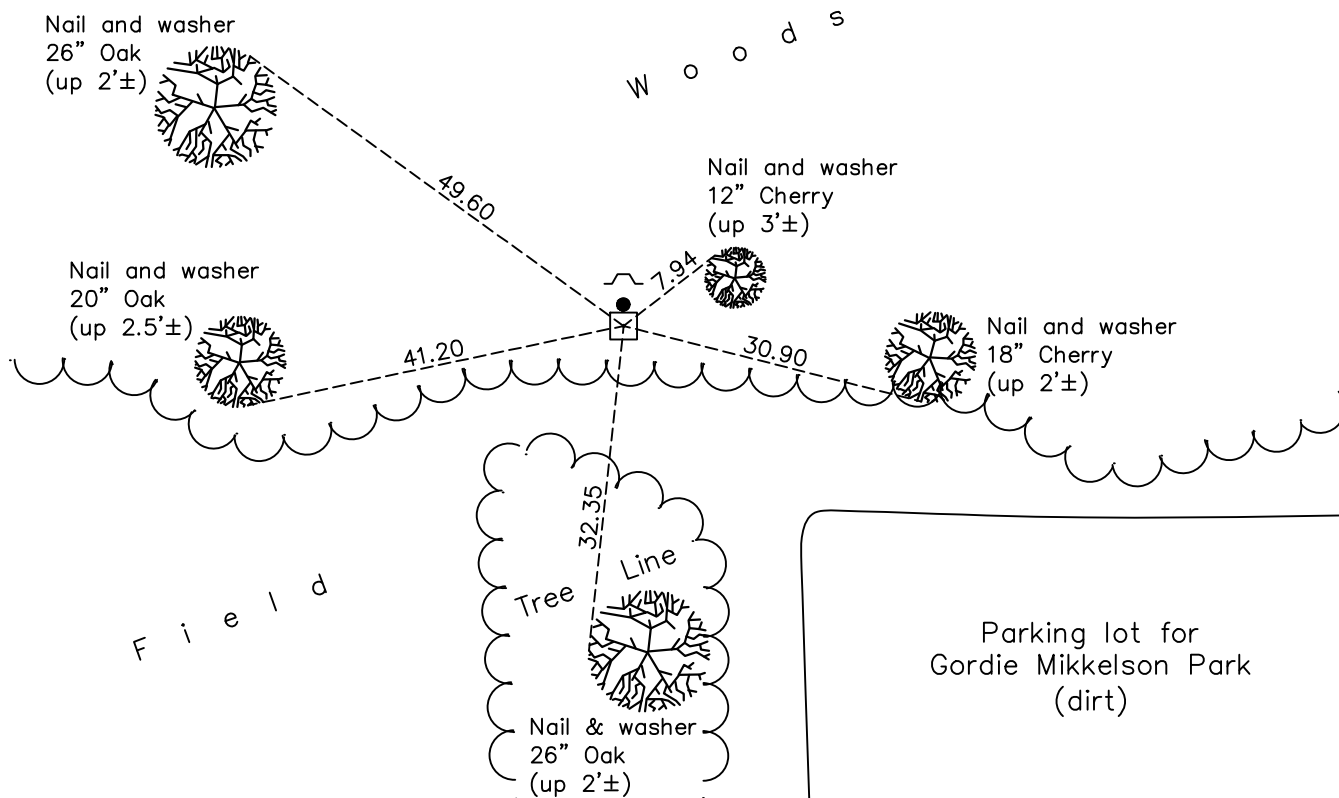
North 1/4 Corner of Sec. 8 Township 33 Range 22

On the 16th day of June, 1958, the described corner was evidenced by a granite monument with an iron rod on the north side

and to perpetuate the location of said corner, at the exact location thereof, a permanent marker was placed consisting of the same granite monument and iron rod with sign and post on the north side

AND on the 7th day of December, 2021, said permanent marker was found flush and the ties were updated

Updated reference ties are as shown below.



N.A.D. 1983 Coordinates
(1996 Adjustment)

County Project Coordinates	
Northing	<u>222120.4140</u>
Easting	<u>539743.1548</u>
Date	<u>4/13/04</u>

I hereby certify that this United States public land survey monument record is correct and complete to the best of my knowledge and belief.

David Zieglmeier Date 12/11/23

David M. Zieglmeier, Anoka County Surveyor
Minnesota License Number 46179

Revision Date

03/17/22

HISTORY OF GOVERNMENT CORNER

Page No. 32

County of Anoka

State of Minnesota

North 1/4 Corner of Sec. 8 Township 33 Range 22

CORNER HISTORY:

June 16, 1958 - Found granite monument and established ties to monument.

July 6, 1960 - Found 6" x 6" granite monument up 0.1'± and updated ties.

May 29, 1964 - Found granite monument and updated ties.

July 7, 1967 - Found granite monument flush and updated ties.

July 15, 1971 - Found granite monument and updated ties.

July 23, 1975 - Found granite monument and updated ties.

July 20, 1978 - Found granite monument and updated ties.

August 17, 1981 - Found granite monument and updated ties.

June 19, 1985 - Found granite monument and updated ties.

August 12, 1987 - Found granite monument and updated ties.

March 27, 1991 - Found granite monument and updated ties.

June 21, 1993 - Found granite monument and updated ties.

April 13, 2004 - Established NAD 1983 (1996 adj.) Anoka County project coordinates by static GPS methods.

December 4, 2013 - Found granite monument and updated ties.

May 1, 2019 - Found granite monument flush. Verified position by VRS GPS methods. Updated ties.

December 7, 2021 - Found granite monument flush. Verified position by VRS GPS methods. Updated ties.