

CERTIFICATE OF LOCATION OF GOVERNMENT CORNER

County of Anoka

State of Minnesota

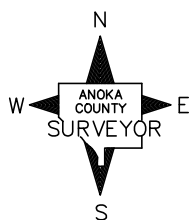
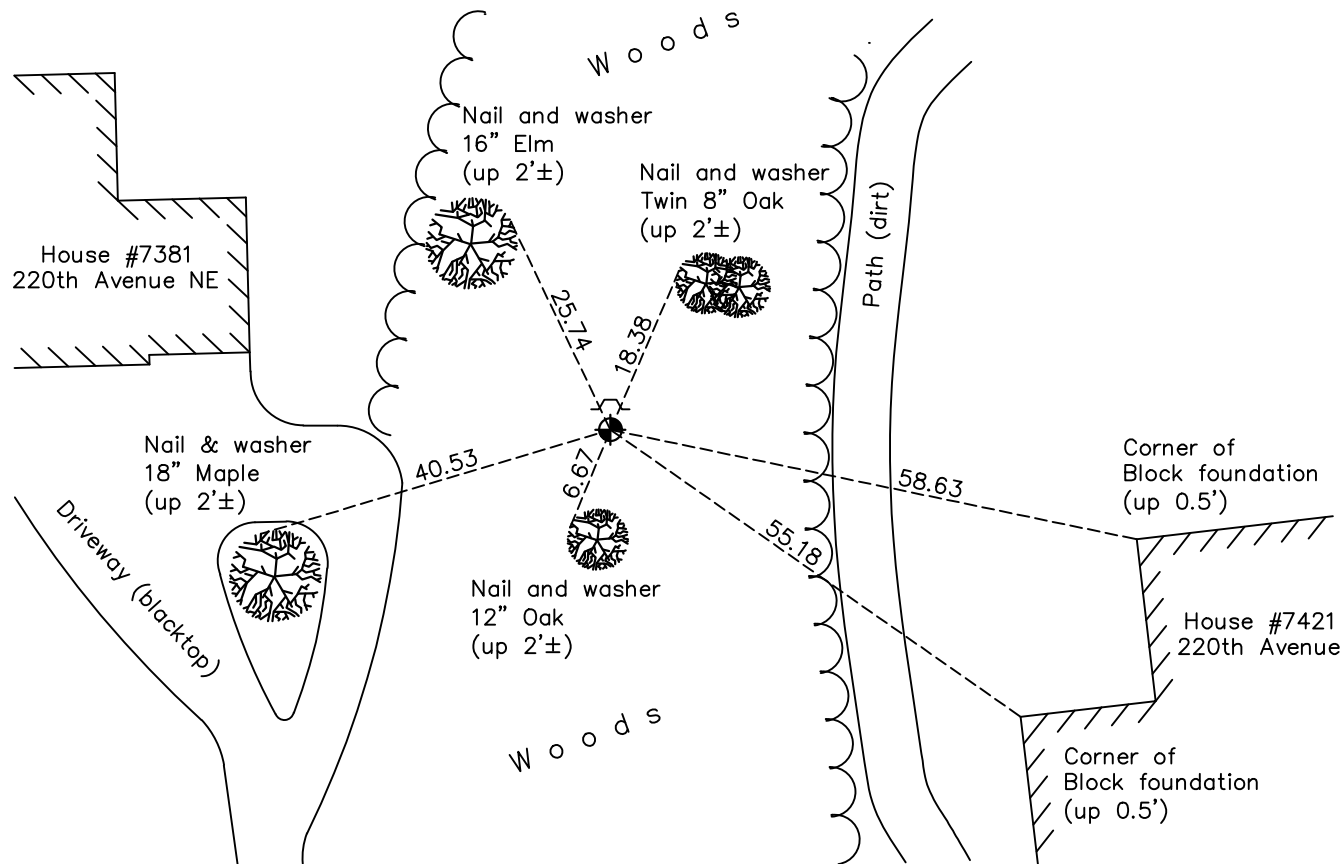
Witness Corner of Sec. 9 Township 33 Range 22
(on east line of NE 1/4)

On the 25th day of January, 1973, the described corner was evidenced by area resurvey

and to perpetuate the location of said corner, at the exact location thereof, a permanent marker was placed consisting of a cast iron monument with a sign and post on the north side

AND on the 28th day of February, 2023, said permanent marker was found flush, ACS RTK
GPS verified

Updated reference ties are as shown below.



Revision Date
10/13/2023

N.A.D. 1983 Coordinates
(1996 Adjustment)

County Project Coordinates	
Northing	<u>221403.7810</u>
Easting	<u>547866.6880</u>
Date	<u>4/07/04</u>

I hereby certify that this United States public land survey monument record is correct and complete to the best of my knowledge and belief.

David Zieglmeier Date 12/11/23

David M. Zieglmeier, Anoka County Surveyor
Minnesota License Number 46179

HISTORY OF GOVERNMENT CORNER

County of Anoka

State of Minnesota

Witness Corner of Sec. 9 Township 33 Range 22
(on east line of NE 1/4)

CORNER HISTORY:

January 25, 1973 - Set iron pipe using area resurvey. Established ties to iron pipe.

July 24, 1975 - Found iron pipe and updated ties.

July 15, 1976 - Found iron pipe and replaced with a cast iron monument. Updated ties.

August 7, 1978 - Found cast iron monument and updated ties.

August 24, 1981 - Found cast iron monument and updated ties.

August 26, 1987 - Found cast iron monument and updated ties.

March 27, 1991 - Found cast iron monument and updated ties.

June 30, 1993 - Found cast iron monument and updated ties.

April 7, 2004 - Established NAD 1983 (1996 adj.) Anoka County project coordinates by static GPS methods.

November 25, 2013 - Found cast iron monument and updated ties.

January 28, 2019 - Found cast iron monument flush and updated ties.

January 4, 2022 - Found cast iron monument flush. Verified position by VRS GPS methods. Updated ties.

February 28, 2023 - Found cast iron monument flush. Verified position by RTK GPS methods.