

CERTIFICATE OF LOCATION OF GOVERNMENT CORNER

County of Anoka

State of Minnesota

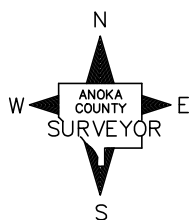
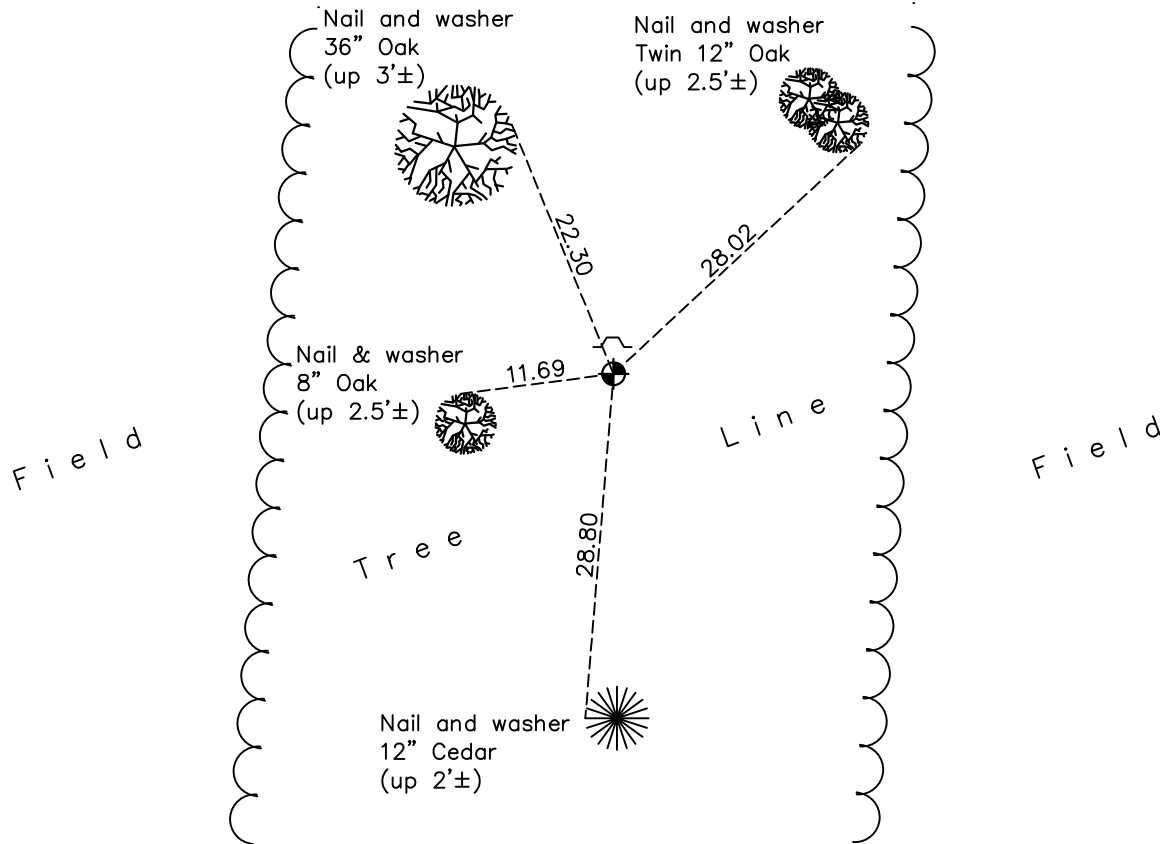
East 1/4 Corner of Sec. 9 Township 33 Range 22

On the 25th day of January, 1972, the described corner was evidenced by area resurvey

and to perpetuate the location of said corner, at the exact location thereof, a permanent marker was placed consisting of a cast iron monument with a sign and post on the north side

AND on the 8th day of March, 2022, said permanent marker was found down 0.2'± and the ties were updated

Updated reference ties are as shown below.



Revision Date

03/17/22

N.A.D. 1983 Coordinates
(1996 Adjustment)

County Project Coordinates	
Northing	<u>219366.9110</u>
Easting	<u>547688.8950</u>
Date	<u>4/08/04</u>

I hereby certify that this United States public land survey monument record is correct and complete to the best of my knowledge and belief.

David Zieglsmeier Date 12/11/23

David M. Zieglsmeier, Anoka County Surveyor
Minnesota License Number 46179

HISTORY OF GOVERNMENT CORNER

Page No. 43

County of Anoka

State of Minnesota

East 1/4 Corner of Sec. 9 Township 33 Range 22

CORNER HISTORY:

January 25, 1972 - Set 1/2" iron pipe using area resurvey. Replaced iron pipe with cast iron monument and established ties to monument.

July 23, 1975 - Found cast iron monument and updated ties.

July 21, 1978 - Found cast iron monument and updated ties.

August 17, 1981 - Found cast iron monument and updated ties.

December 26, 1990 - Found cast iron monument and updated ties.

June 28, 1993 - Found cast iron monument and updated ties.

April 8, 2004 - Established NAD 1983 (1996 adj.) Anoka County project coordinates by static GPS methods.

December 6, 2013 - Found cast iron monument and updated ties.

April 19, 2019 - Found cast iron monument flush and updated the ties.

March 8, 2022 - Found cast iron monument down 0.2'±. Verified position by VRS GPS methods. Updated ties.