

CERTIFICATE OF LOCATION OF GOVERNMENT CORNER

County of Anoka

State of Minnesota

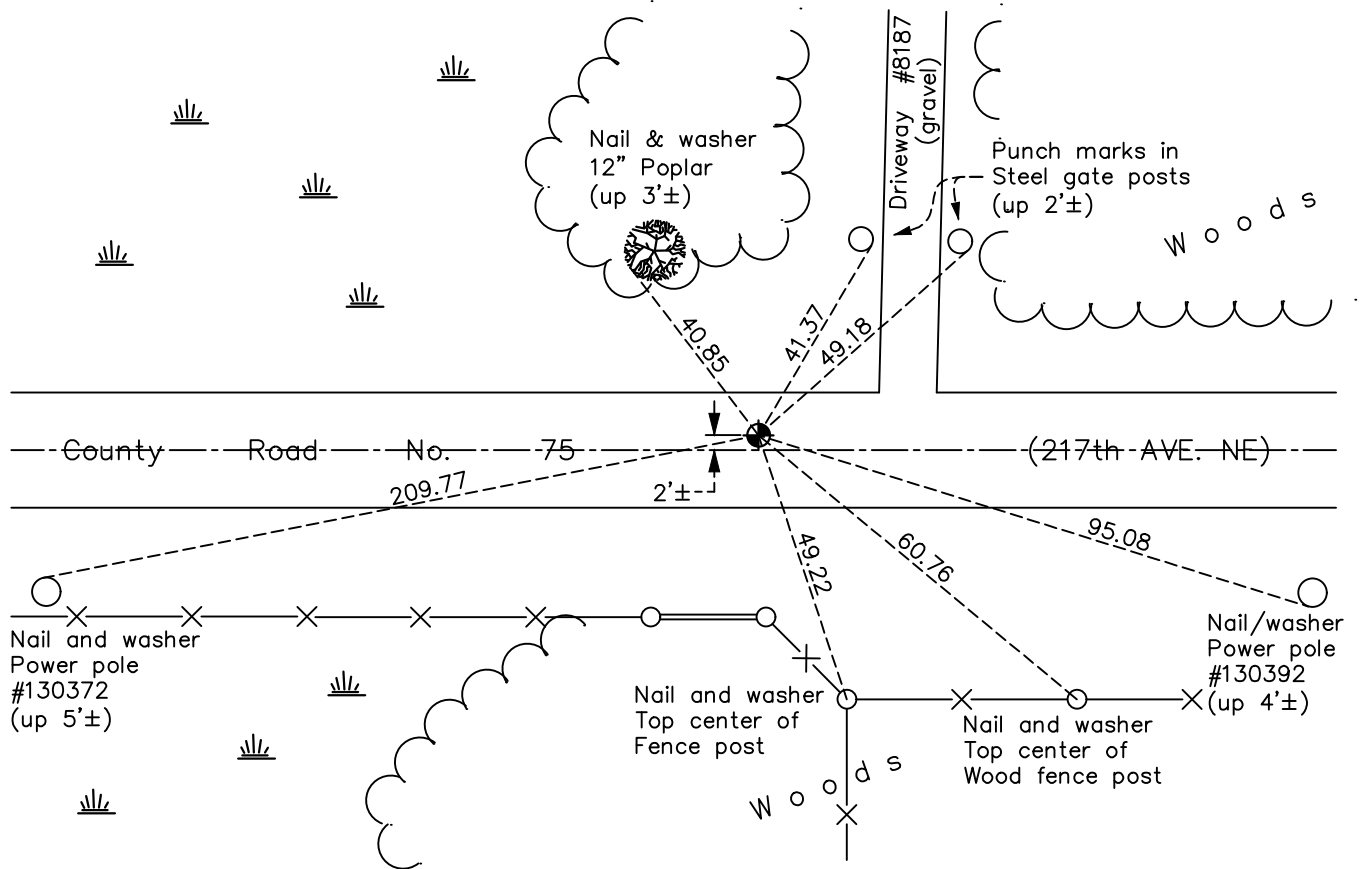
East 1/4 Corner of Sec. 10 Township 33 Range 22

On the 3rd day of July, 1974, the described corner was evidenced by area resurvey

and to perpetuate the location of said corner, at the exact location thereof, a permanent marker was placed consisting of a cast iron monument

AND on the 23rd day of December, 2021, said permanent marker was found flush and the ties were updated

Updated reference ties are as shown below.



Revision Date
03/17/22

N.A.D. 1983 Coordinates
(1996 Adjustment)

County Project Coordinates	
Northing	<u>219431.1657</u>
Easting	<u>553031.8884</u>
Date	<u>4/13/04</u>

I hereby certify that this United States public land survey monument record is correct and complete to the best of my knowledge and belief.

David Zieglmeier Date 12/11/23

David M. Zieglmeier, Anoka County Surveyor
Minnesota License Number 46179

HISTORY OF GOVERNMENT CORNER

Page No. 44

County of Anoka

State of Minnesota

East 1/4 Corner of Sec. 10 Township 33 Range 22

CORNER HISTORY:

July 3, 1974 - Set cast iron monument using area resurvey. Established ties to monument.

July 23, 1975 - Found cast iron monument and updated ties.

July 21, 1978 - Found cast iron monument flush and updated ties.

August 4, 1981 - Found cast iron monument and updated ties.

August 28, 1984 - Found cast iron monument and updated ties.

December 26, 1990 - Found cast iron monument and updated ties.

June 14, 1993 - Found cast iron monument and updated ties.

June 3, 1999 - Found cast iron monument and set construction ties prior to road construction. Removed monument. Replaced cast iron monument and updated ties after road construction.

April 13, 2004 - Established NAD 1983 (1996 aadj.) Anoka County project coordinates by static GPS methods.

November 22, 2013 - Found cast iron monument. Verified position by VRS GPS methods. Updated ties.

October 5, 2018 - Found cast iron monument. Verified position by VRS GPS methods. Updated ties.

February 22, 2019 - Found cast iron monument. Verified position by VRS GPS methods. Updated ties.

December 23, 2021 - Found cast iron monument flush. Verified position by VRS GPS methods. Updated ties.