

CERTIFICATE OF LOCATION OF GOVERNMENT CORNER

County of Anoka

State of Minnesota

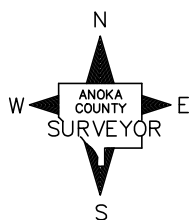
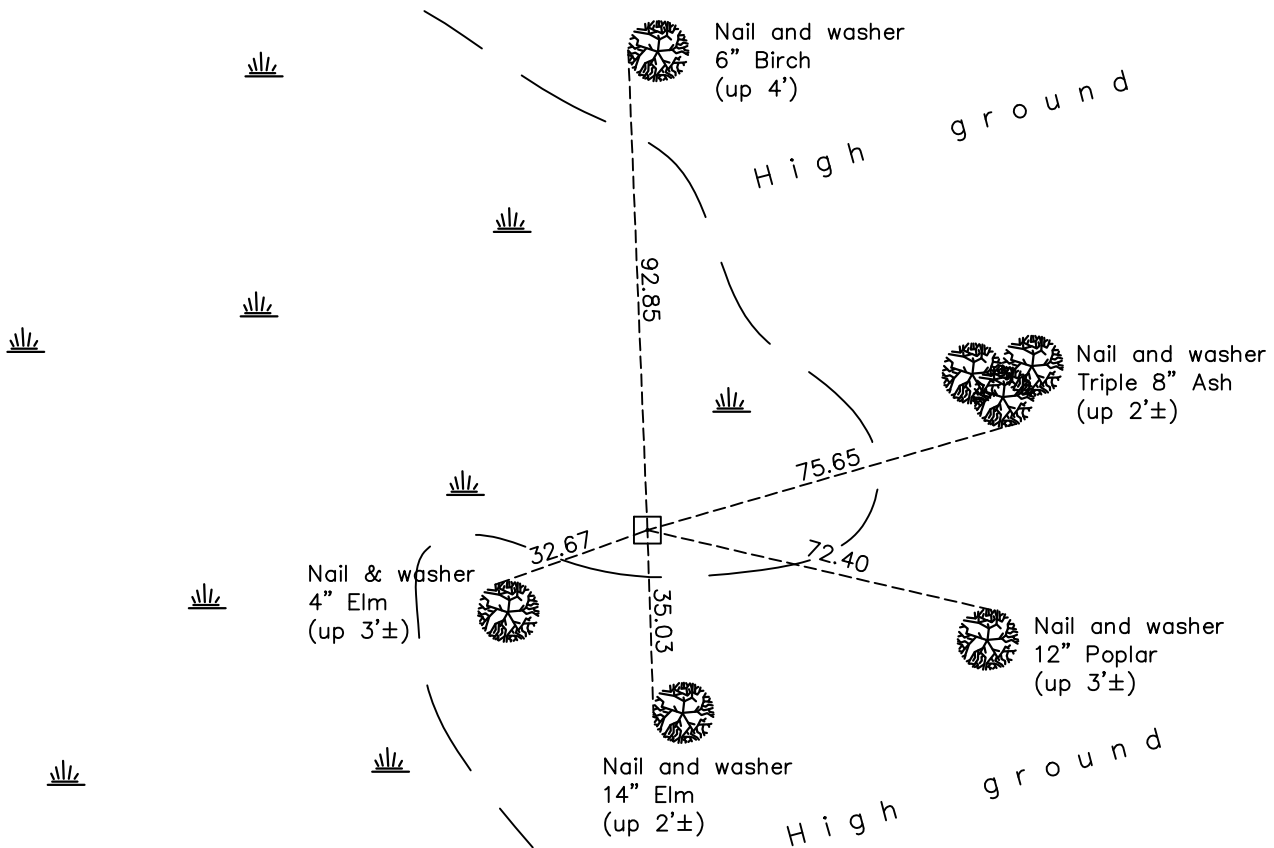
East 1/4 Corner of Sec. 12 Township 33 Range 22

On the 25th day of March, 1975, the described corner was evidenced by a concrete monument

and to perpetuate the location of said corner, at the exact location thereof, a permanent marker was placed consisting of 1 1/2" x 1 1/2" Square Steel Telspar up 5' ±

AND on the 28th day of November, 2022, said permanent marker was found square steel red and white telspar up 5'± with sign attached. Updated ties.

Updated reference ties are as shown below.



Revision Date
 12/02/2022

N.A.D. 1983 Coordinates
 (1996 Adjustment)

County Project Coordinates	
Northing	<u>219122.0033</u>
Easting	<u>563672.9656</u>
Date	<u>3/31/05</u>

I hereby certify that this United States public land survey monument record is correct and complete to the best of my knowledge and belief.
David Zieglmeier Date 6/28/23
 David Zieglmeier Anoka County Surveyor
 Minnesota License Number 46179

HISTORY OF GOVERNMENT CORNER

Page No. 46B

County of Anoka

State of Minnesota

East 1/4 Corner of Sec. 12 Township 33 Range 22

CORNER HISTORY:

March 25, 1975 - Found concrete monument up 1'± and leaning south. Established ties to "X" in monument ("X" is off-centered).

January 18, 1978 - Found concrete monument and updated ties.

April 3, 1991 - Found concrete monument laying down using area resurvey. Set spike in post. Concrete monument was straightened after ice was gone (April 18, 1991).

March 31, 2005 - Established NAD 1983 (1996 adj.) Anoka County project coordinates by static GPS methods.

November 28, 2022 - Found 1 ½" by 1 ½" red and white, square steel telspar up 5' ± with sign attached up 5'±, verified position by GPS VRS method and updated ties.