

CERTIFICATE OF LOCATION OF GOVERNMENT CORNER

County of Anoka

State of Minnesota

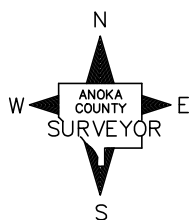
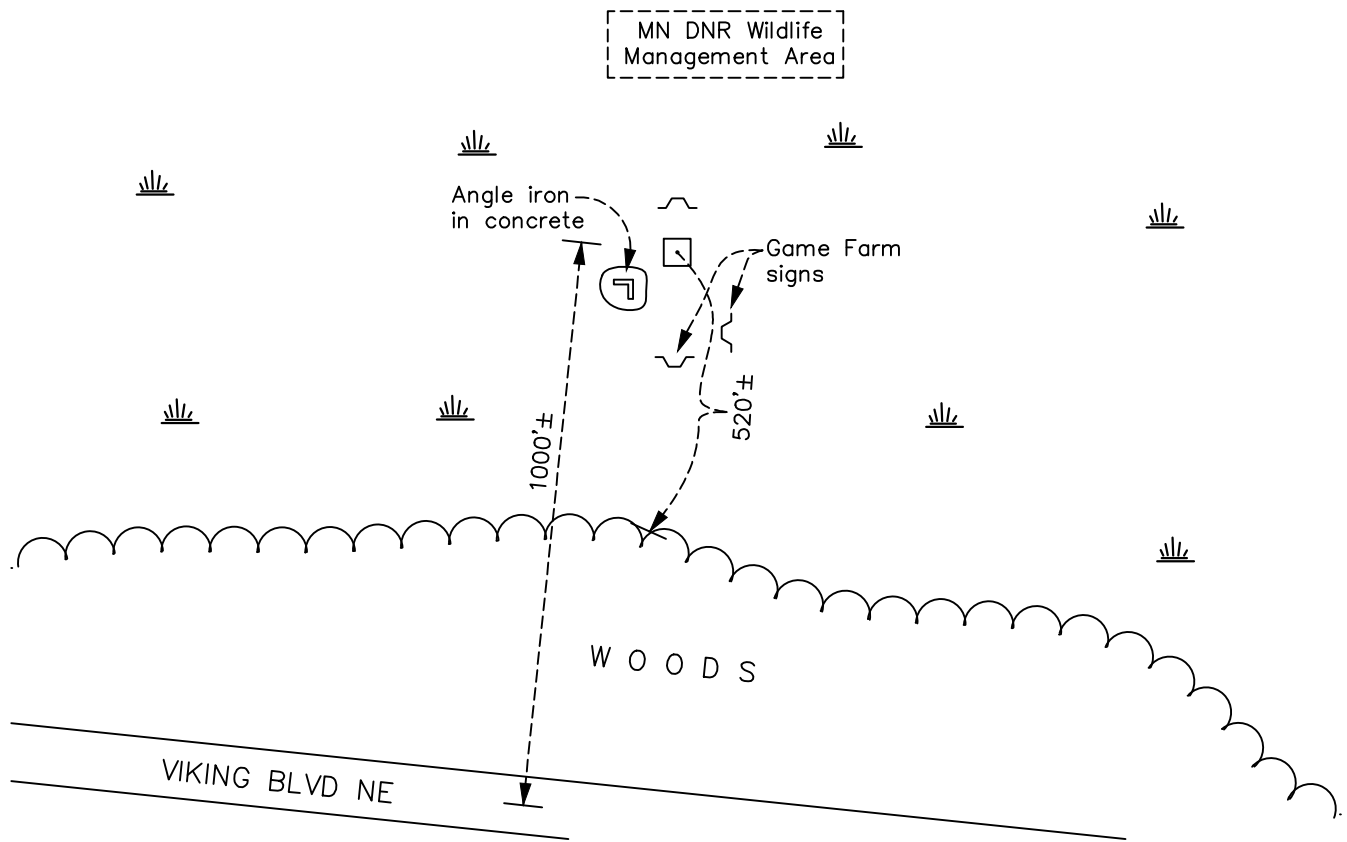
Southeast Corner of Sec. 11 Township 33 Range 22

On the 29th day of January, 1974, the described corner was evidenced by a granite monument

and to perpetuate the location of said corner, at the exact location thereof, a permanent marker was placed consisting of the same granite monument with a sign and post on the north side

AND on the 29th day of March, 2022, said permanent marker was located granite monument down 1' +/- under water. 'X' mark not visible due to water. Ties not available.

Updated reference ties are as shown below.



Revision Date
 10/13/2023

N.A.D. 1983 Coordinates
 (1996 Adjustment)

County Project Coordinates	
Northing	<u>216668.9445</u>
Easting	<u>558199.7913</u>
Date	<u>3/07/06</u>

I hereby certify that this United States public land survey monument record is correct and complete to the best of my knowledge and belief.
David Zieglmeier Date 12/11/23
 David Zieglmeier Anoka County Surveyor
 Minnesota License Number 46179

HISTORY OF GOVERNMENT CORNER

Page No. 49

County of Anoka

State of Minnesota

Southeast Corner of Sec. 11 Township 33 Range 22

CORNER HISTORY:

January 29, 1974 - Found granite monument down 1' under ice. Placed sign and post 1'± north of monument. No corner ties established.

March 7, 2006 - Established NAD 1983 (1996 adj.) Anoka County project coordinates by static GPS methods.

March 29, 2022 - Located granite monument down 1' ± under water. 'X' mark not visible due to water. No ties.