

CERTIFICATE OF LOCATION OF GOVERNMENT CORNER

County of Anoka

State of Minnesota

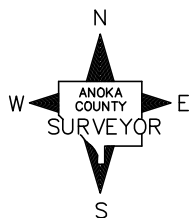
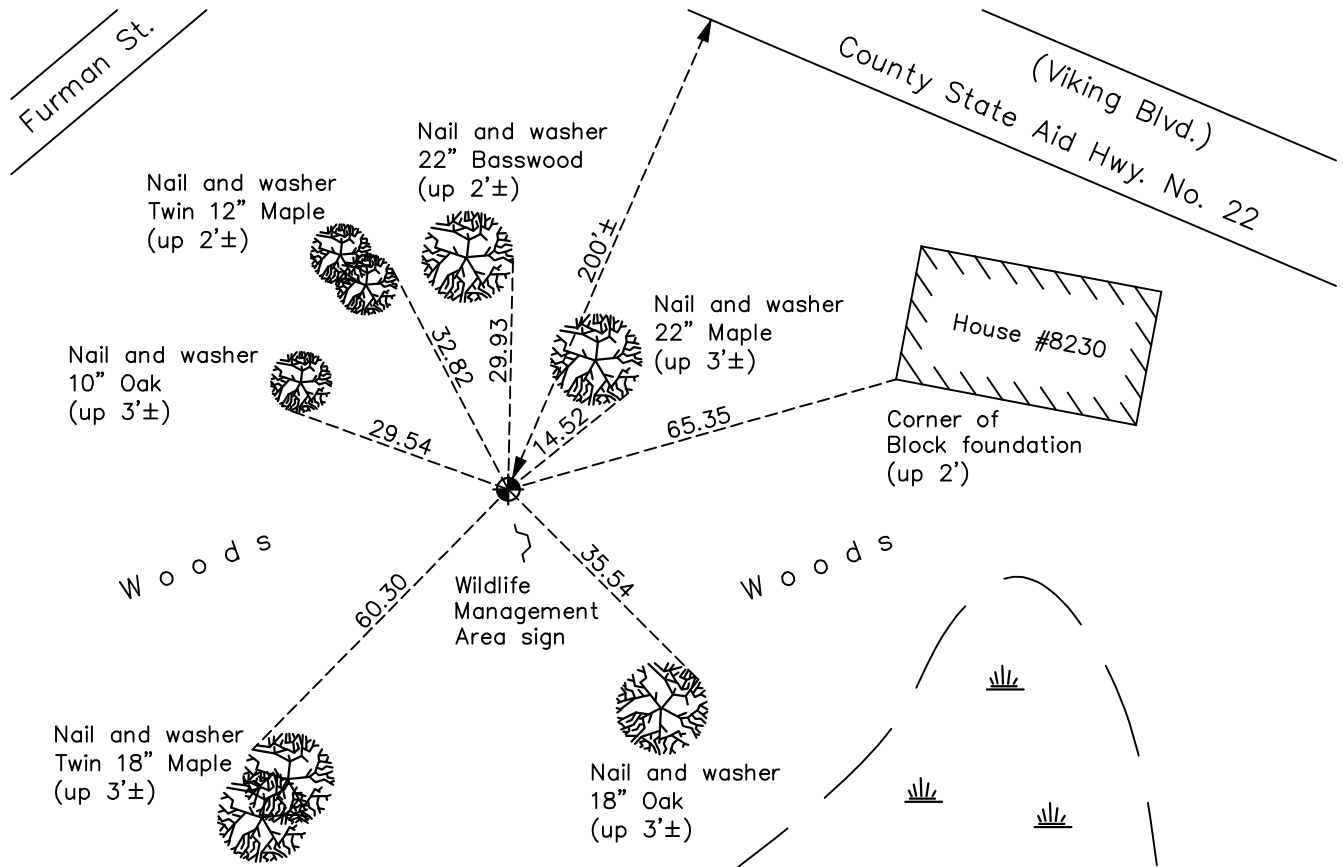
Southeast Corner of Sec. 10 Township 33 Range 22

On the 11th day of March, 1966, the described corner was evidenced by a 4" square concrete monument

and to perpetuate the location of said corner, at the exact location thereof, a permanent marker was placed consisting of a cast iron monument

AND on the 10th day of March, 2023, said permanent marker was found up 0.2'± and the position was verified as correct using County RTK GPS method

Updated reference ties are as shown below.



Revision Date
3/27/2023

N.A.D. 1983 Coordinates
 (1996 Adjustment)

County Project Coordinates	
Northing	<u>216780.1403</u>
Easting	<u>552898.0564</u>
Date	<u>4/07/04</u>

I hereby certify that this United States public land survey monument record is correct and complete to the best of my knowledge and belief.

David Zieglmeier Date 4/13/23

David M. Zieglmeier, Anoka County Surveyor
 Minnesota License Number 46179

HISTORY OF GOVERNMENT CORNER

Page No. 51

County of Anoka

State of Minnesota

Southeast Corner of Sec. 10 Township 33 Range 22

CORNER HISTORY:

March 11, 1966 - Found concrete monument up 0.5'± and updated ties.

June 28, 1967 - Found concrete monument and updated ties.

July 15, 1971 - Found concrete monument and updated ties.

July 24, 1975 - Found concrete monument and replaced with a cast iron monument flush. Updated ties.

July 24, 1978 - Found cast iron monument and updated ties.

August 19, 1981 - Found cast iron monument and updated ties.

October 18, 1990 - Found cast iron monument and updated ties.

June 28, 1993 - Found cast iron monument and updated ties.

April 7, 2004 - Established NAD 1983 (1996 adj.) Anoka County project coordinates by static GPS methods.

November 20, 2013 - Found cast iron monument up 0.2'± and updated ties.

February 26, 2019 - Found cast iron monument up 0.2'± and updated ties.

January 14, 2022 - Found cast iron monument up 0.2'±. Verified position by VRS GPS methods. Updated ties.

March 10, 2023 - Found cast iron monument and verified position as correct using County RTK GPS method.