

CERTIFICATE OF LOCATION OF GOVERNMENT CORNER

County of Anoka

State of Minnesota

Meander Corner of Sec. 9 Township 33 Range 22

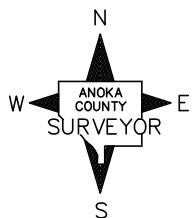
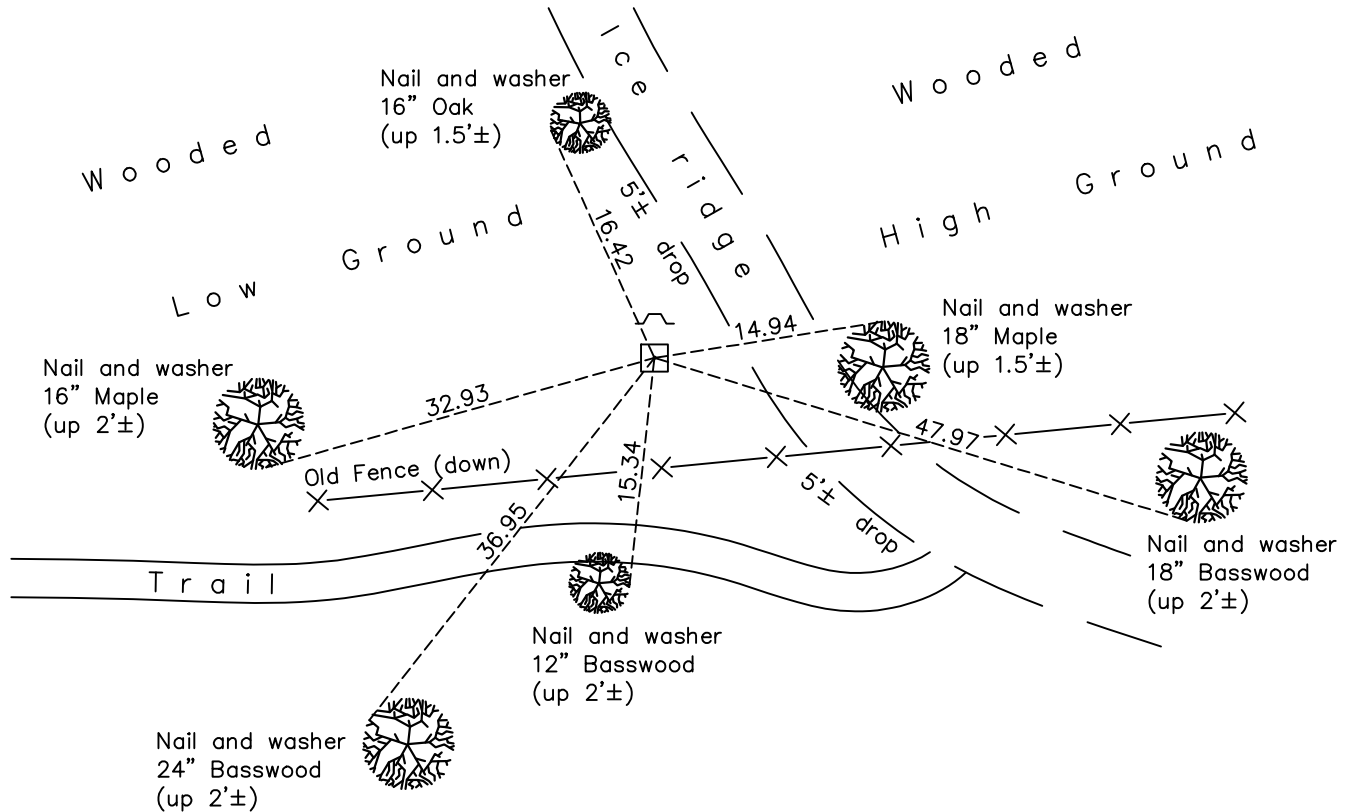
(MC #21 on south line of SW 1/4)

On the 30th day of November, 1955, the described corner was evidenced by a 6" X 6" granite monument

and to perpetuate the location of said corner, at the exact location thereof, a permanent marker was placed consisting of the same granite monument with a sign and post on the north side

AND on the 23rd day of December, 2021, said permanent marker was found up 0.5'± and the ties were updated

Updated reference ties are as shown below.



Revision Date
03/17/22

N.A.D. 1983 Coordinates
 (1996 Adjustment)

County Project Coordinates	
Northing	<u>216795.7761</u>
Easting	<u>544681.8552</u>
Date	<u>5/12/04</u>

I hereby certify that this United States public land survey monument record is correct and complete to the best of my knowledge and belief.

David Zieglermeier Date 12/11/23

David M. Zieglermeier, Anoka County Surveyor
 Minnesota License Number 46179

HISTORY OF GOVERNMENT CORNER

Page No. 55

County of Anoka

State of Minnesota

Meander Corner of Sec. 9 Township 33 Range 22

(MC #21 on south line of SW 1/4)

CORNER HISTORY:

November 30, 1955 - Found 6"x6" granite monument up 4" & established ties to monument by E.A. Westman.

August 27, 1964 - Found 6"x6" granite monument up 0.4'± and updated ties.

July 11, 1967 - Found granite monument and updated ties.

July 9, 1971 - Found granite monument and updated ties.

July 24, 1975 - Found granite monument and updated ties.

July 24, 1978 - Found granite monument and updated ties.

August 26, 1981 - Found granite monument and updated ties.

October 18, 1990 - Found granite monument and updated ties.

June 24, 1993 - Found granite monument and updated ties.

May 12, 2004 - Established NAD 1983 (1996 adj.) Anoka County project coordinates by static GPS methods.

November 27, 2013 - Found granite monument and updated ties.

May 2, 2019 - Found granite monument up 0.5'± and updated ties.

December 23, 2021 - Found granite monument up 0.5'± and updated ties.