

CERTIFICATE OF LOCATION OF GOVERNMENT CORNER

County of Anoka

State of Minnesota

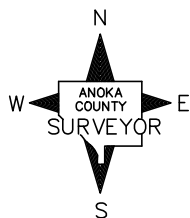
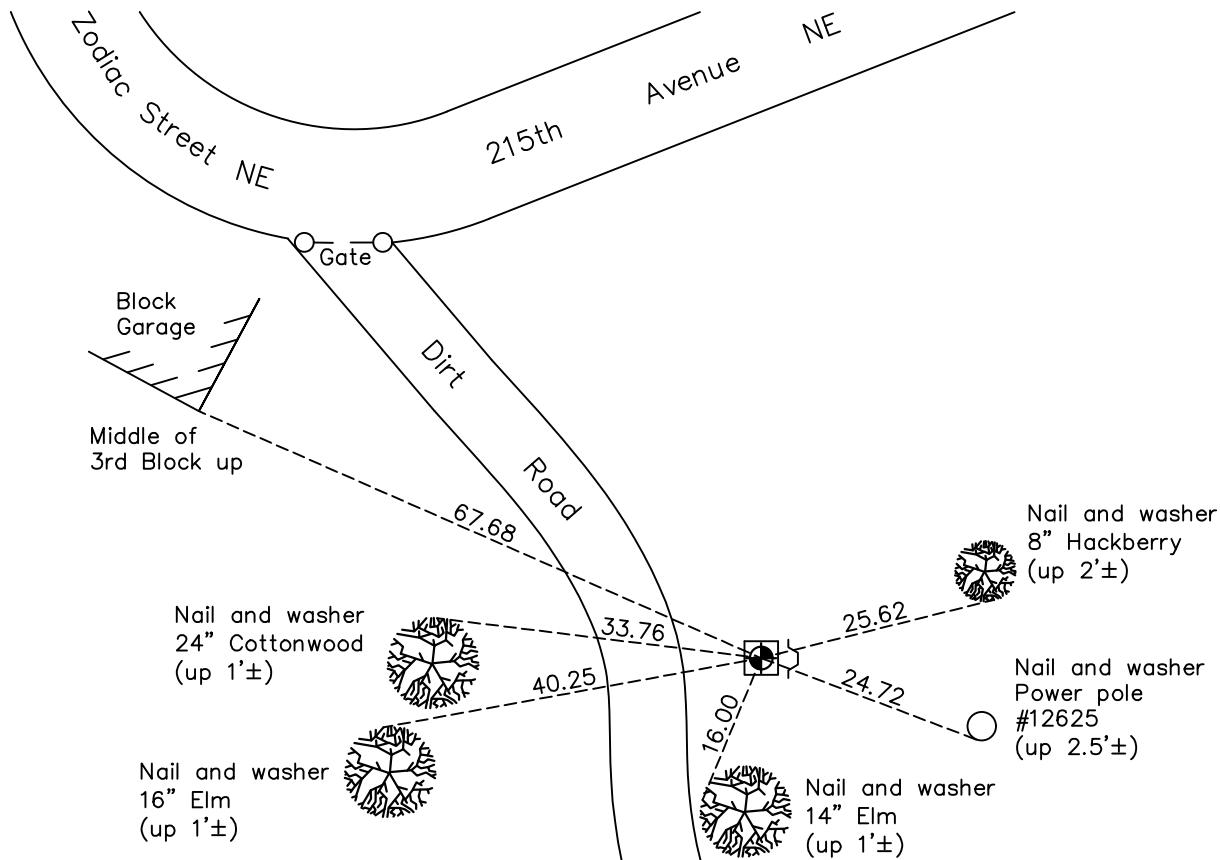
Meander Corner of Sec. 9 Township 33 Range 22

On the 23rd day of April, 1963, the described corner was evidenced by 0.8' square concrete slab

and to perpetuate the location of said corner, at the exact location thereof, a permanent marker was placed consisting of a cast iron monument on top of the concrete slab

AND on the 28th day of February, 2023, said permanent marker was found down 0.1'± with a sign and post on the East side. The position was verified as correct using County RTK GPS method

Updated reference ties are as shown below.



Revision Date

6/22/2023

N.A.D. 1983 Coordinates
(1996 Adjustment)

County Project Coordinates	
Northing	<u>218383.9680</u>
Easting	<u>542278.2489</u>
Date	<u>1/18/05</u>

I hereby certify that this United States public land survey monument record is correct and complete to the best of my knowledge and belief.

David Zieglsmeier Date 12/11/23

David M. Zieglsmeier, Anoka County Surveyor
Minnesota License Number 46179

HISTORY OF GOVERNMENT CORNER

Page No. 56

County of Anoka

State of Minnesota

Meander Corner of Sec. 9 Township 33 Range 22

CORNER HISTORY:

April 23, 1963 - Found 0.8' square concrete slab down 14" with chiseled "X" in center. Established ties to concrete slab.

June 28, 1967 - Found concrete slab and updated ties.

July 2, 1971 - Found concrete slab had moved. Set cast iron monument on top of concrete slab flush with the surface using corner ties. Updated ties.

July 24, 1975 - Found cast iron monument and updated ties.

July 24, 1978 - Found cast iron monument and updated ties.

August 10, 1981 - Found cast iron monument and updated ties.

August 24, 1984 - Found cast iron monument and updated ties.

November 9, 1987 - Found cast iron monument and updated ties.

June 23, 1993 - Found cast iron monument and updated ties.

January 18, 2005 - Established NAD 1983 (1996 adj.) Anoka County project coordinates by static GPS! methods.

December 4, 2013 - Found cast iron monument. Verified position by VRS GPS methods. Updated ties.

January 25, 2019 - Found cast iron monument. Verified position by VRS GPS methods. Updated ties.

December 15, 2021 - Found cast iron monument. Verified position by VRS GPS methods. Updated ties.

February 28, 2023 - Found cast iron monument flush. Verified position by ACS RTK GPS methods.