

# CERTIFICATE OF LOCATION OF GOVERNMENT CORNER

County of Anoka

State of Minnesota

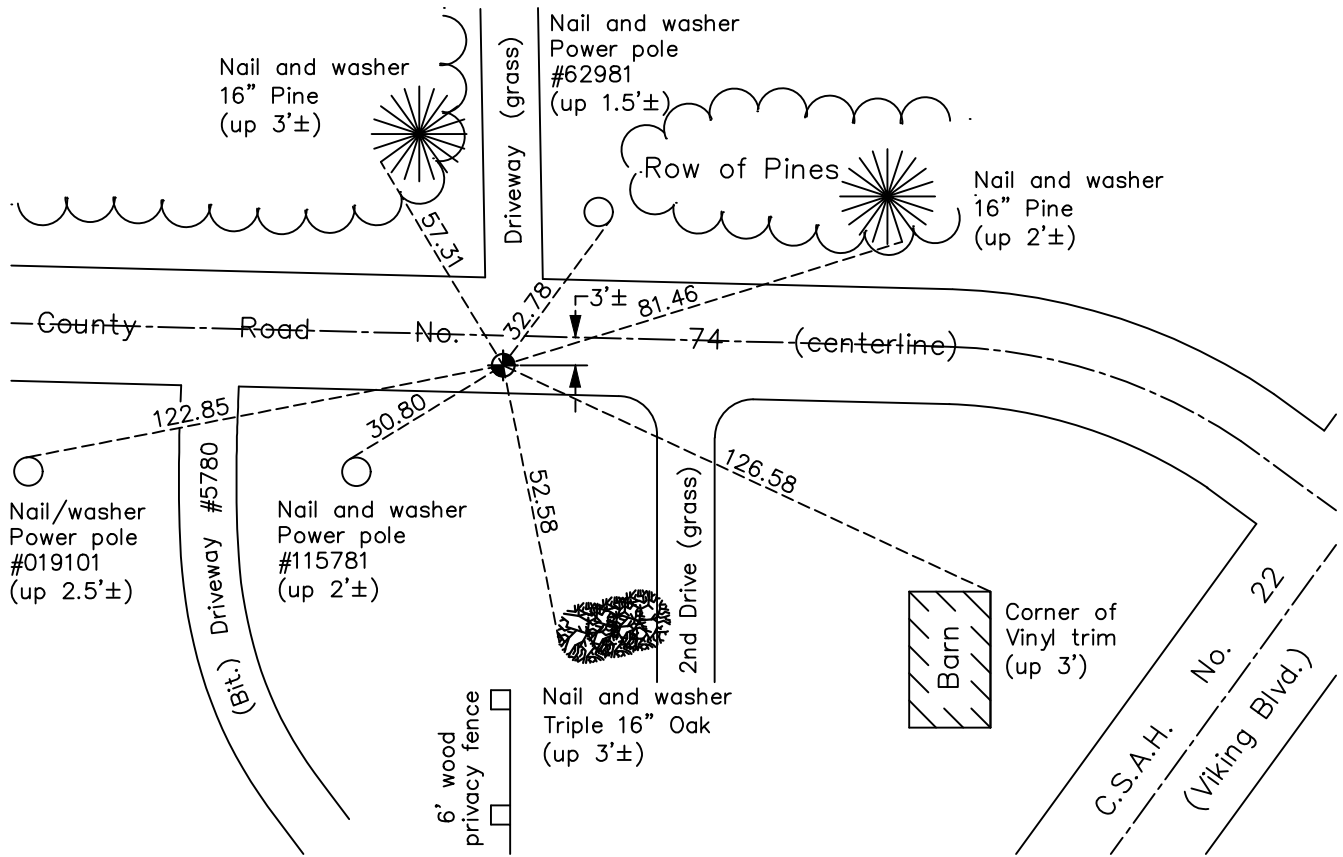
## Southwest Corner of Sec. 8 Township 33 Range 22

On the 24th day of March, 1961, the described corner was evidenced by a 1" iron pipe

and to perpetuate the location of said corner, at the exact location thereof, a permanent marker was placed consisting of a cast iron monument

AND on the 8th day of March, 2022, said permanent marker was found cast iron monument flush. Position verified by VRS GPS method. Ties updated after reset in June, 2021

Updated reference ties are as shown below.



Revision Date

03/21/22

N.A.D. 1983 Coordinates  
(1996 Adjustment)

County Project Coordinates	
Northing	<u>216707.5096</u>
Easting	<u>536890.1398</u>
Date	<u>6/09/03</u>

I hereby certify that this United States public land survey monument record is correct and complete to the best of my knowledge and belief.

*David Zieglmeier* Date 12/11/23

David Zieglmeier Anoka County Surveyor  
Minnesota License Number 46179

# HISTORY OF GOVERNMENT CORNER

Page No. 58

County of Anoka

State of Minnesota

## Southwest Corner of Sec. 8 Township 33 Range 22

### **CORNER HISTORY:**

March 16, 1954 - Found stone monument in center line of road using Cartwright notes. No corner ties established.

March 24, 1961 - Found 1" iron pipe down 1' in gravel road using old tie tree and County Highway tie lath. Established ties to iron pipe.

June 27, 1967 - Found 1" iron pipe and replaced with a cast iron monument. Updated ties.

June 30 - Found cast iron monument flush and updated ties.

September 7, 1973 - Raised cast iron monument flush and updated ties.

July 24, 1975 - Found cast iron monument and updated ties.

July 24, 1978 - Found cast iron monument and updated ties.

August 5, 1981 - Found cast iron monument and updated ties.

August 24, 1984 - Found cast iron monument and updated ties.

November 9, 1987 - Found cast iron monument and updated ties.

June 16, 1993 - Found cast iron monument and updated ties.

June 4, 2003 - Found cast iron monument and updated ties.

June 9, 2003 - Established NAD 1983 (1996 adj.) Anoka County project coordinates by static GPS methods.

November 18, 2013 - Found cast iron monument and updated ties.

February 28, 2019 - Found cast iron monument flush. Verified position by VRS GPS methods. Updated ties.

April 27, 2021 - Found cast iron monument. Verified position using VRS GPS methods and updated corner ties prior to road construction. Removed monument.

June 7, 2021 - Reset cast iron monument flush after road construction using static GPS methods. Updated ties.

March 8, 2022 - Found cast iron monument flush. Verified position by VRS GPS methods.