

# CERTIFICATE OF LOCATION OF GOVERNMENT CORNER

County of Anoka

State of Minnesota

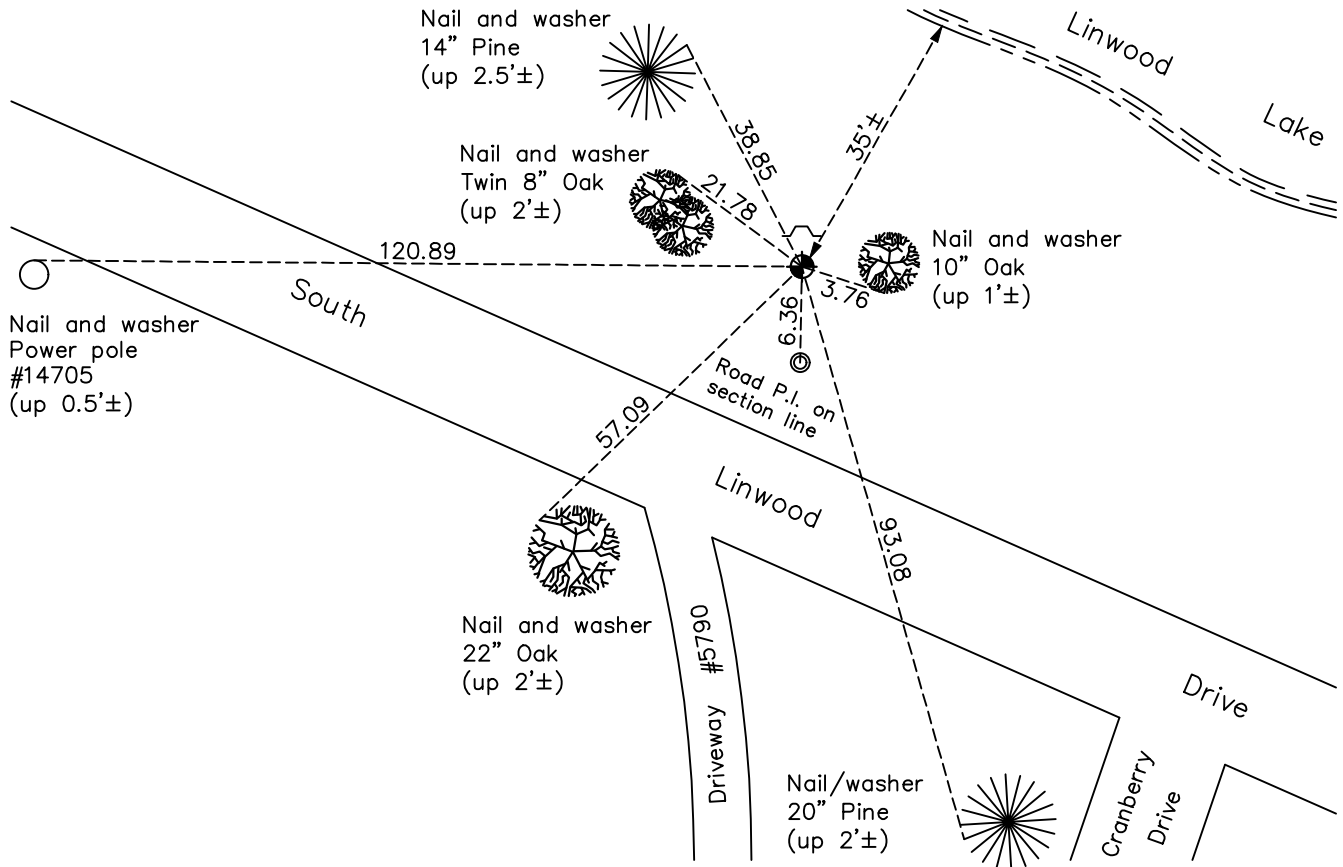
Witness Corner of Sec. 18 Township 33 Range 22  
(also theoretical East 1/4 corner)

On the 10th day of November, 1970, the described corner was evidenced by area resurvey

and to perpetuate the location of said corner, at the exact location thereof, a permanent marker was placed consisting of a cast iron monument with sign and post on north side

AND on the 2nd day of March, 2022, said permanent marker was found down 1'± and the ties were updated

Updated reference ties are as shown below.



Revision Date  
03/21/22

N.A.D. 1983 Coordinates  
 (1996 Adjustment)

County Project Coordinates	
Northing	<u>214066.0488</u>
Easting	<u>536876.6745</u>
Date	<u>4/08/04</u>

I hereby certify that this United States public land survey monument record is correct and complete to the best of my knowledge and belief.

*David Zieglmeier* Date 12/11/23

David M. Zieglmeier, Anoka County Surveyor  
 Minnesota License Number 46179

# HISTORY OF GOVERNMENT CORNER

Page No. 62

County of Anoka

State of Minnesota

Witness Corner of Sec. 18 Township 33 Range 22  
(also theoretical East 1/4 corner)

## **CORNER HISTORY:**

November 10, 1970 - Set cast iron monument flush using area resurvey. Established ties to monument. Set sign and post on north side of monument.

June 24, 1971 - Found cast iron monument and updated ties.

July 25, 1975 - Found cast iron monument and updated ties.

July 25, 1978 - Found cast iron monument and updated ties.

August 10, 1981 - Found cast iron monument and updated ties.

August 24, 1984 - Found cast iron monument and updated ties.

June 16, 1993 - Found cast iron monument and updated ties.

April 8, 2004 - Established NAD 1983 (1996 adj.) Anoka County project coordinates by static GPS methods.

December 10, 2013 - Found cast iron monument down 1'± and updated ties.

April 10, 2019 - Found cast iron monument down 1'± and updated ties.

March 2, 2022 - Found cast iron monument down 1'±. Verified position by VRS GPS methods. Updated ties.