

CERTIFICATE OF LOCATION OF GOVERNMENT CORNER

County of Anoka State of Minnesota

West 1/4 Corner of Sec. 13 Township 33 Range 22

On the 21st day of April, 1980, the described corner was evidenced by a concrete monument

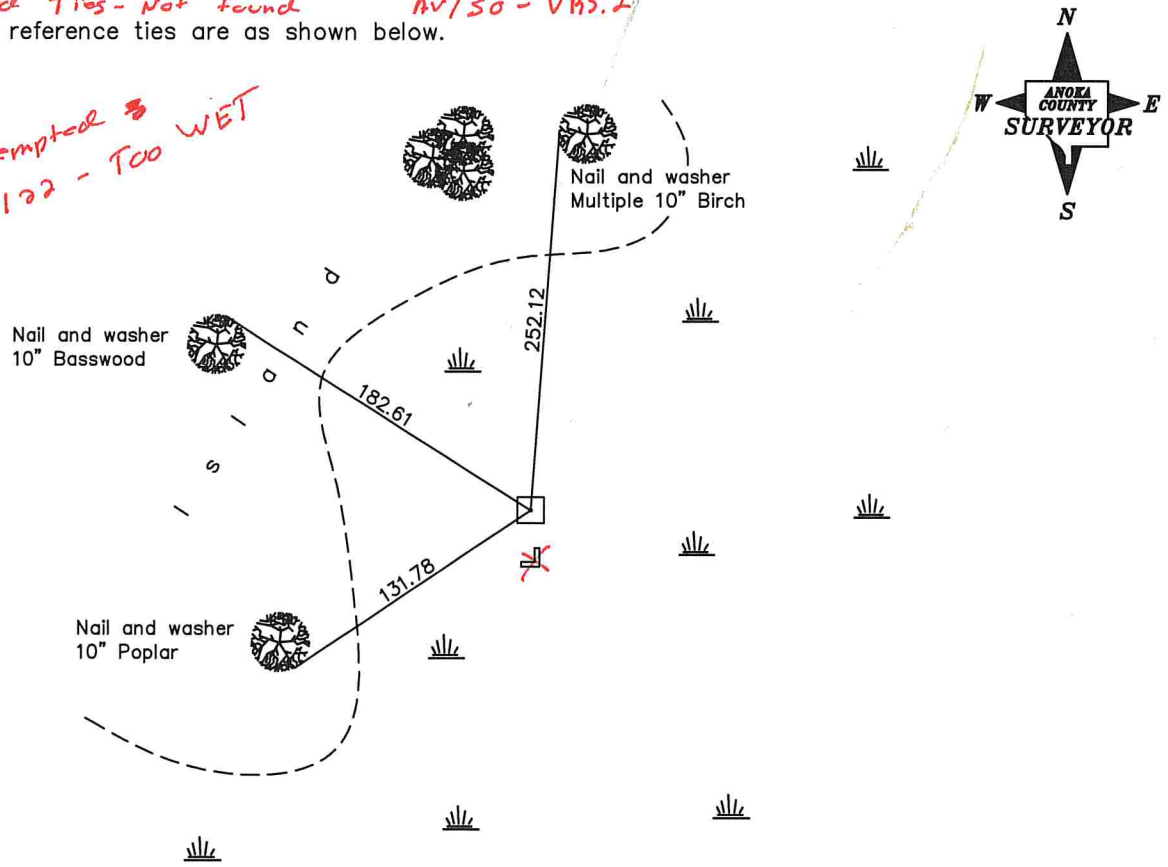
and to perpetuate the location of said corner, at the exact location thereof, a permanent marker was placed consisting of the same concrete monument with a steel post on the south side

AND on the 30th day of Nov, 2022, said permanent marker was Not found at surface.

Opened hole and found likely Monument, down 1.6' under frozen surface.

Searched Ties - Not found AV/50 - VRS.2 Updated reference ties are as shown below.

Attempted 3 4/15/22 - Too WET



Error N: +0.013 E: +0.285

Table with 2 columns: Revised date, and rows for 4/21/80, 7/18/95, and blank rows.

Table with 2 columns: N.A.D. 1983 Coordinates (1996 Adjustment) and County Project Coordinates. Rows for Northing (214026.0209), Easting (558194.5064), and Date (3/07/06).

I hereby certify that this United States public land survey monument record is correct and complete to the best of my knowledge and belief. Date _____, Anoka County Surveyor Minnesota License Number _____

VRS.2 30Q: 0.025 N: 214026.033 E: 558194.791