

CERTIFICATE OF LOCATION OF GOVERNMENT CORNER

County of Anoka

State of Minnesota

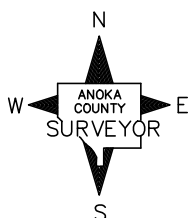
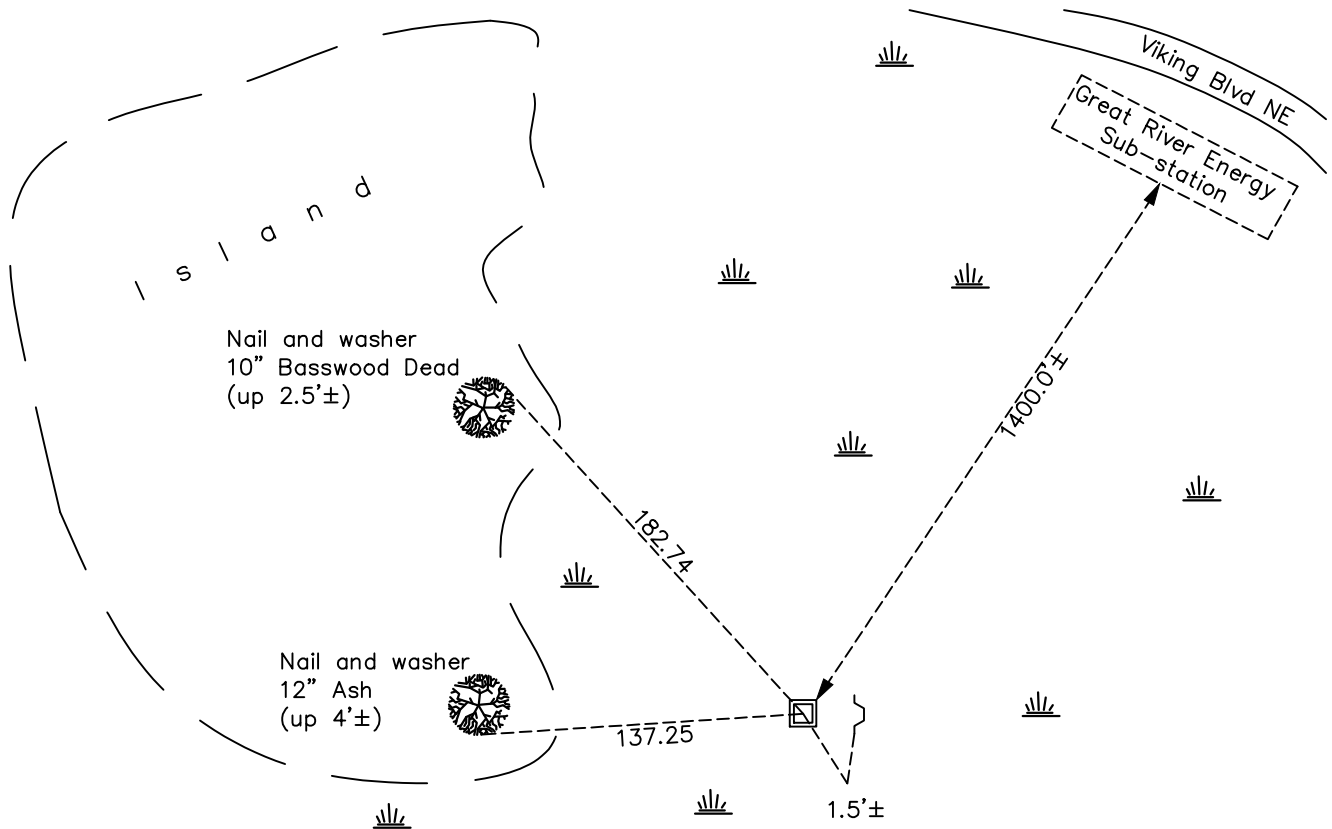
West 1/4 Corner of Sec. 13 Township 33 Range 22

On the 5th day of February, 2025, the described corner was evidenced by a concrete monument down 2' and leaning

and to perpetuate the location of said corner, at the exact location thereof, a permanent marker was placed consisting of a new 2"x2"x10' Telespar with "County Surveyor" cap and punch mark

AND on the 5th day of February, 2025, said permanent marker was set up 1'± using RTK GPS method. Updated ties.

Updated reference ties are as shown below.



Revision Date

02/06/2025

N.A.D. 1983 Coordinates
(1996 Adjustment)

County Project Coordinates

Northing 214026.0209Easting 558194.5064Date 3/07/06

I hereby certify that this United States public land survey monument record is correct and complete to the best of my knowledge and belief.

David Zieglmeier Date 3/17/25

David Zieglmeier Anoka County Surveyor

Minnesota License Number 46179

HISTORY OF GOVERNMENT CORNER

Page No. 66

County of Anoka

State of Minnesota

West 1/4 Corner of Sec. 13 Township 33 Range 22

CORNER HISTORY:

January 1855 - This corner was established by Hiram Taylor, Deputy Surveyor. Taylor marked this position by "set quarter section post" with two bearing trees marked as accessories.

April 21, 1980 - Found concrete monument lying down with steel post set in concrete on south side. Straightened up concrete monument. Established ties to monument.

March 7, 2006 - Found concrete monument. Established NAD 1983 (1996 adj) Anoka County project coordinates by static GPS methods.

N = 214026.0209

E = 558194.5064

November 30, 2022 - Concrete monument not found at surface, opened hole in frozen surface, locating possible monument at depth of 1.6'± checking position by GPS VRS method. No previous noted ties located.

February 5, 2025 - Found concrete monument down 2'± and leaning (left below). Set 2"x2"x10' Telespar with "County Surveyor" cap and punch mark up 1'± using RTK GPS method. Set sign and post 1.5'± east. Updated ties. Job # 25 - 100.