

CERTIFICATE OF LOCATION OF GOVERNMENT CORNER

County of Anoka

State of Minnesota

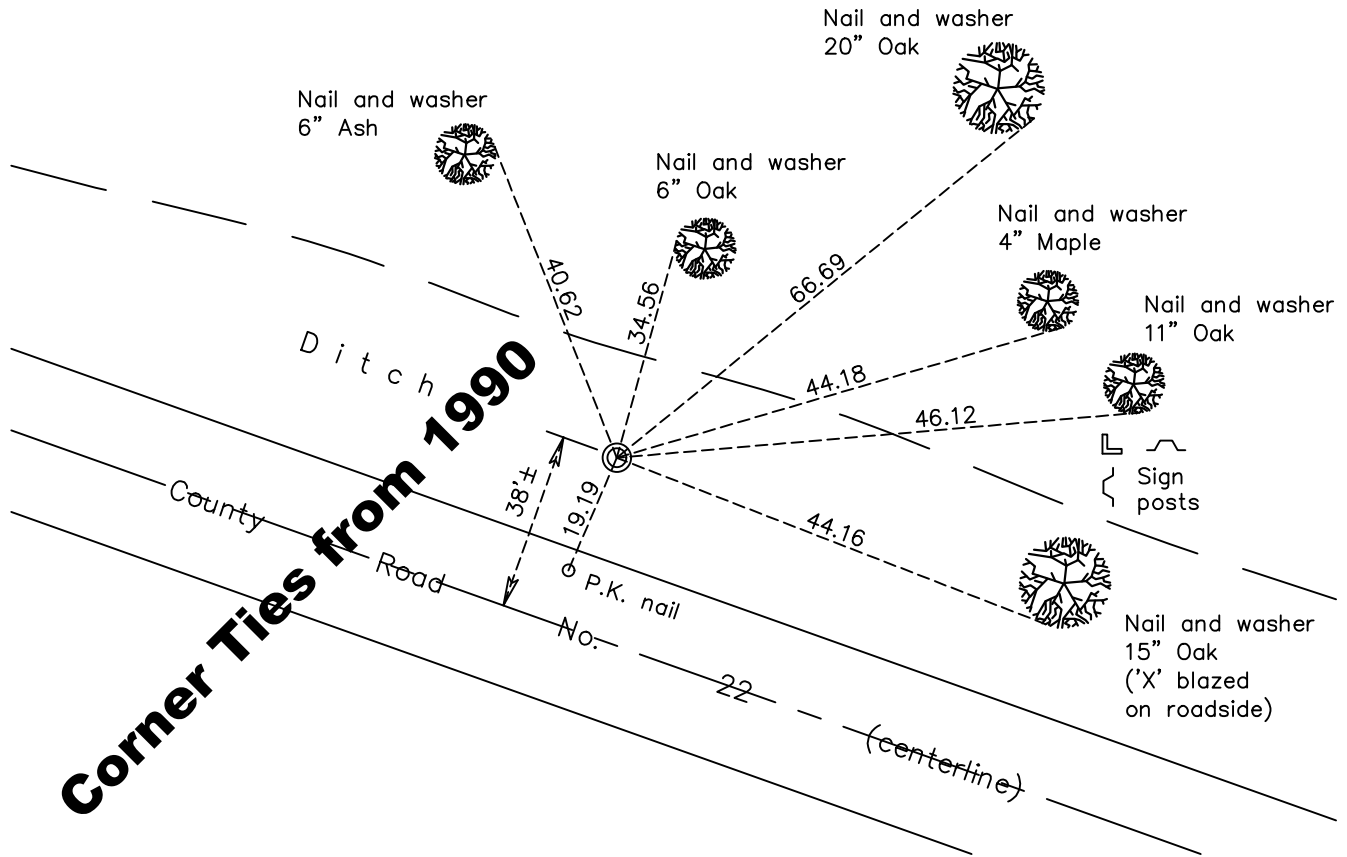
Center Corner of Sec. 13 Township 33 Range 22

On the 11th day of September, 1969, the described corner was evidenced by a broken
concrete monument

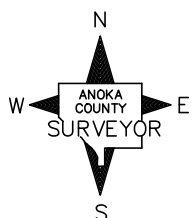
and to perpetuate the location of said corner, at the exact location thereof, a permanent marker
was placed consisting of a 1 1/2" iron pipe

AND on the 6th day of April, 2021, said permanent marker was found and verified
position by static GPS methods

Updated reference ties are as shown below.



Corner Ties from 1990



Revision Date
9/23/2021

N.A.D. 1983 Coordinates
(1996 Adjustment)

County Project Coordinates	
Northing	<u>213940.6647</u>
Easting	<u>560873.0355</u>
Date	<u>3/9/2006</u>

I hereby certify that this United States public land survey monument record is correct and complete to the best of my knowledge and belief.

Date _____

David M. Zieglmeier, Anoka County Surveyor
Minnesota License Number 46179