

# CERTIFICATE OF LOCATION OF GOVERNMENT CORNER

County of Anoka

State of Minnesota

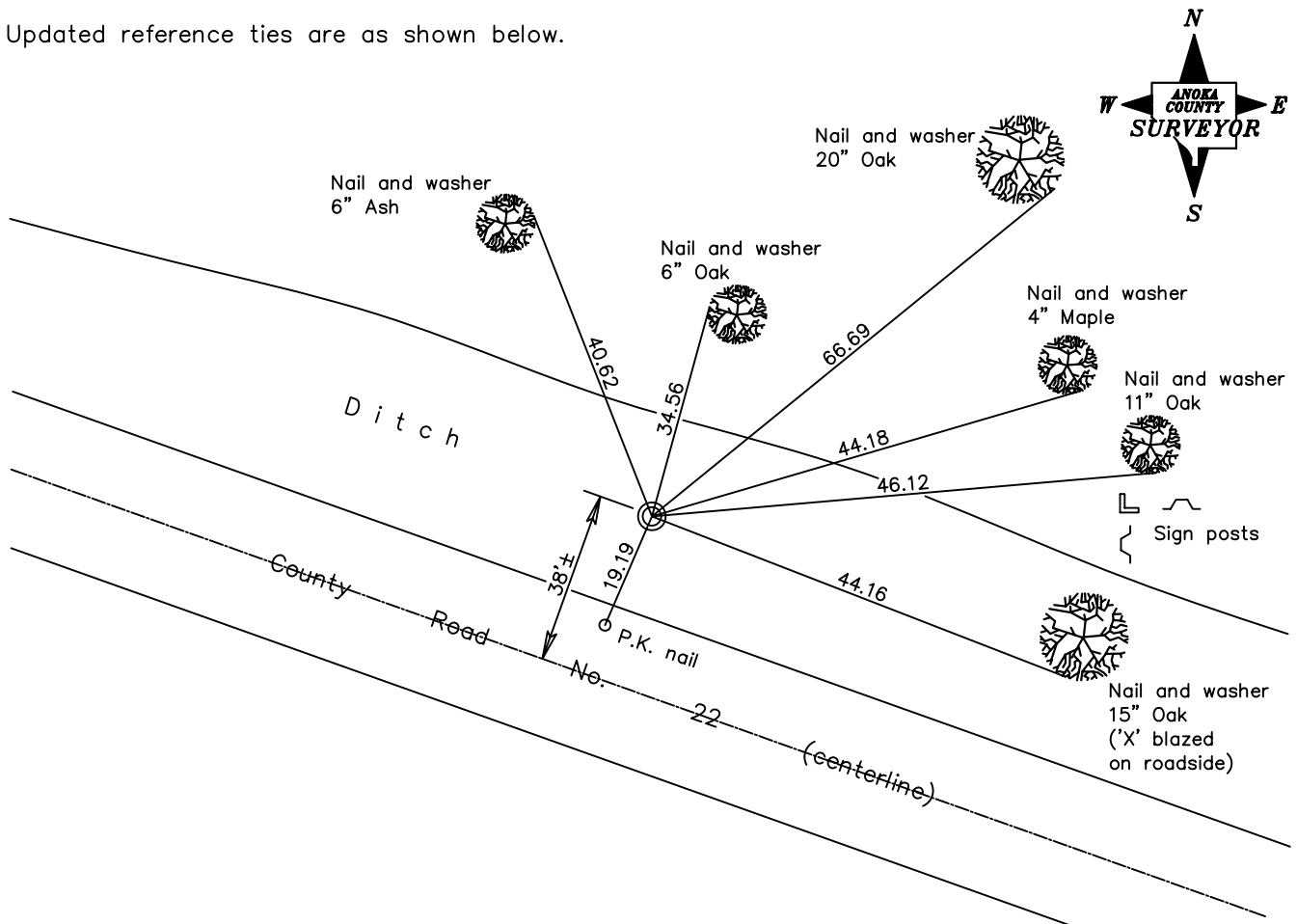
Center Corner of Sec. 13 Township 33 Range 22

On the 11th day of September, 1969, the described corner was evidenced by a broken concrete monument

and to perpetuate the location of said corner, at the exact location thereof, a permanent marker was placed consisting of a 1 1/2" iron pipe

AND on the \_\_\_ day of \_\_\_\_\_, \_\_\_\_\_, said permanent marker was \_\_\_\_\_

Updated reference ties are as shown below.



Revised date

10/18/90

N.A.D. 1983 Coordinates  
(1996 Adjustment)

County Project Coordinates	
Northing	213940.6647
Easting	560873.0355
Date	3/09/06

I hereby certify that this United States public land survey monument record is correct and complete to the best of my knowledge and belief.

\_\_\_\_\_ Date \_\_\_\_\_  
 \_\_\_\_\_, Anoka County Surveyor  
 Minnesota License Number \_\_\_\_\_