

# CERTIFICATE OF LOCATION OF GOVERNMENT CORNER

County of Anoka

State of Minnesota

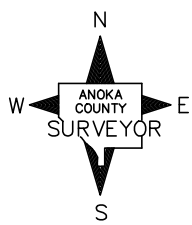
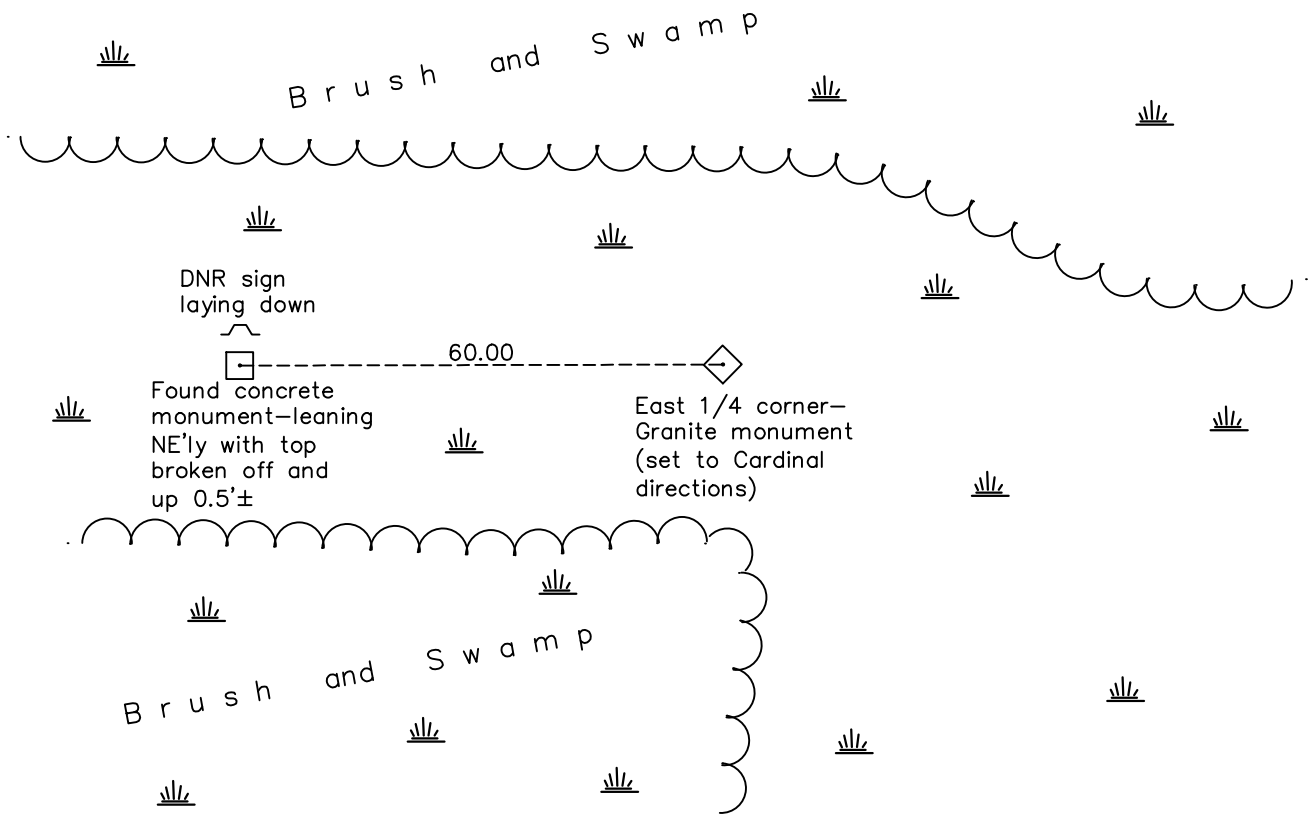
## East 1/4 Corner of Sec. 13 Township 33 Range 22

On the 29th day of January, 1970, the described corner was evidenced by a granite monument

and to perpetuate the location of said corner, at the exact location thereof, a permanent marker was placed consisting of the same granite monument

AND on the 30th day of November, 2022, said permanent marker was found up 0.5'±  
No ties were available

Updated reference ties are as shown below.



Revision Date  
 12/02/2022

N.A.D. 1983 Coordinates  
(1996 Adjustment)

County Project Coordinates	
Northing	<u>213839.1873</u>
Easting	<u>563655.6367</u>
Date	<u>1/25/05</u>

I hereby certify that this United States public land survey monument record is correct and complete to the best of my knowledge and belief.

David Zieglmeier Date 6/28/23

David Zieglmeier Anoka County Surveyor  
 Minnesota License Number 46179

# HISTORY OF GOVERNMENT CORNER

Page No. 68

County of Anoka

State of Minnesota

East 1/4 Corner of Sec. 13 Township 33 Range 22

## **CORNER HISTORY:**

January 29, 1970 - Found granite monument up 1'± set to cardinal points. No corner ties established.

June 25, 1971 - Found granite monument. No corner ties.

February 1, 1973 - Found granite monument and a concrete monument 60.15 feet west of granite monument.

January 25, 2005 - Established NAD 1983 (1996 adj.) Anoka County project coordinates by static GPS methods.

March 13, 2015 - Found granite monument up 0.5'± and verified position by VRS GPS methods. Found concrete monument (up 0.5'±) west of granite monument, leaning northeasterly with the top broken off. Updated distance between granite and concrete monuments.

November 30, 2022 - Found granite monument up 0.5'± and verified position by VRS GPS methods. Found concrete monument (up 0.5'±) west of granite monument, leaning northeasterly with the top broken off.