

CERTIFICATE OF LOCATION OF GOVERNMENT CORNER

County of Anoka

State of Minnesota

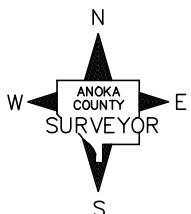
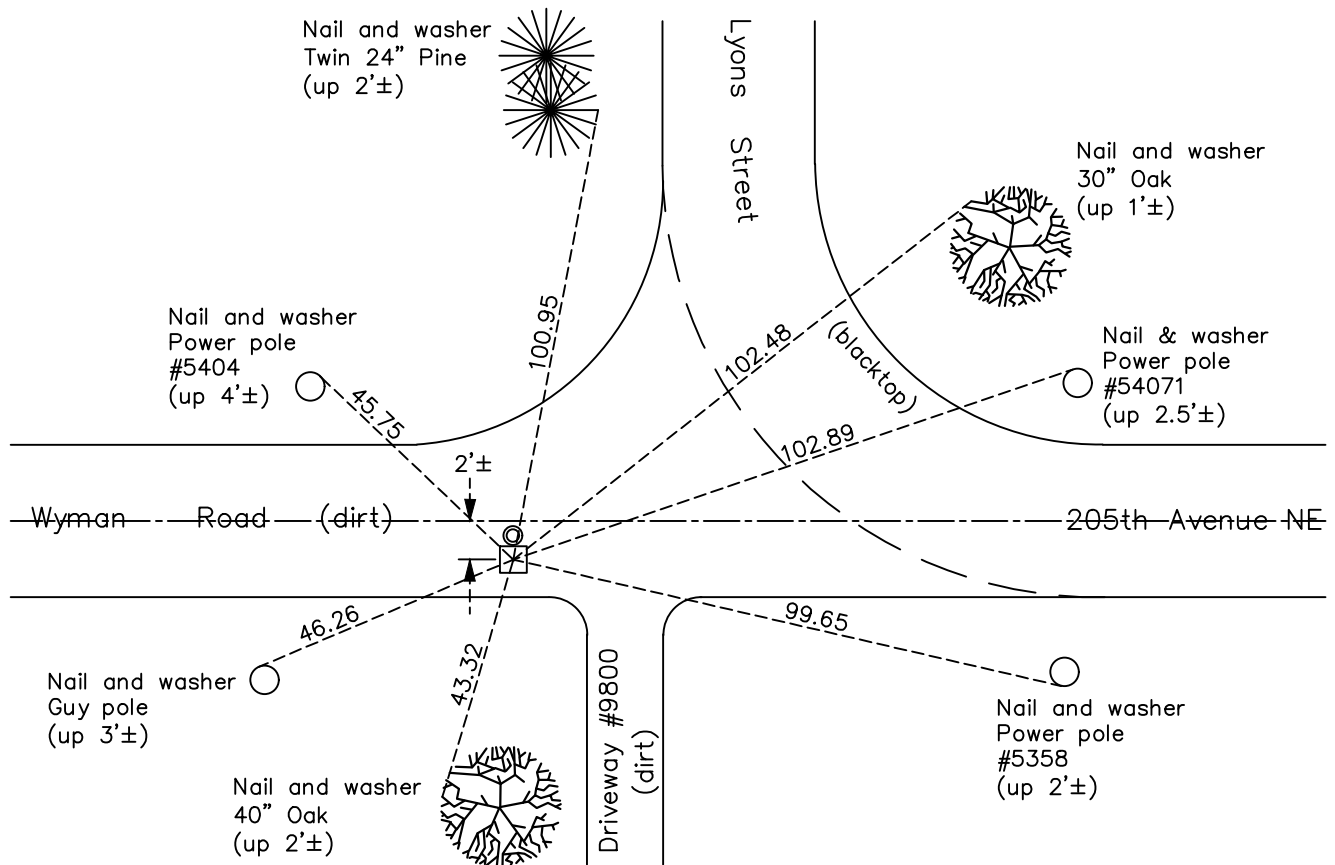
Southeast Corner of Sec. 13 Township 33 Range 22

On the 22nd day of August, 1966, the described corner was evidenced by a stone monument found by the Highway Department on 9/02/1959

and to perpetuate the location of said corner, at the exact location thereof, a permanent marker was placed consisting of the same stone monument with a 1/2" iron pipe set on the north side

AND on the 4th day of April, 2019, said permanent marker was found down 1'± and the ties were updated

Updated reference ties are as shown below.



Revision Date

6/4/19

N.A.D. 1983 Coordinates
(1996 Adjustment)

County Project Coordinates	
Northing	211196.5825
Easting	563516.0770
Date	4/07/04

I hereby certify that this United States public land survey monument record is correct and complete to the best of my knowledge and belief.

David M Zieglmeier Date 8/27/21

David Zieglmeier Anoka County Surveyor
Minnesota License Number 46179

HISTORY OF GOVERNMENT CORNER

Page No. 69

County of Anoka

State of Minnesota

Southeast Corner of Sec. 13 Township 33 Range 22

CORNER HISTORY:

December 13, 1909 - Found monument and updated ties.

September 2, 1959 - Found stone monument flush and updated ties by County highway department.

August 22, 1966 - Found stone monument down 0.6'± and updated ties. Placed 1/2" iron pipe on north face of stone.

June 28, 1967 - Found stone monument and updated ties.

June 25, 1971 - Found stone monument and updated ties.

July 25, 1975 - Found stone monument and updated ties.

July 25, 1978 - Found stone monument and updated ties.

August 5, 1981 - Found stone monument and updated ties.

November 2, 1990 - Found stone monument and updated ties.

June 17, 1993 - Found stone monument and updated ties.

April 7, 2004 - Established NAD 1983 (1996 adj.) Anoka County project coordinates by static GPS methods.

April 8, 2014 - Found stone monument down 1'±. Verified position by VRS GPS methods. Updated ties.

April 4, 2019 - Found stone monument down 1'±. Verified position by VRS GPS methods. Updated ties.