

CERTIFICATE OF LOCATION OF GOVERNMENT CORNER

County of Anoka

State of Minnesota

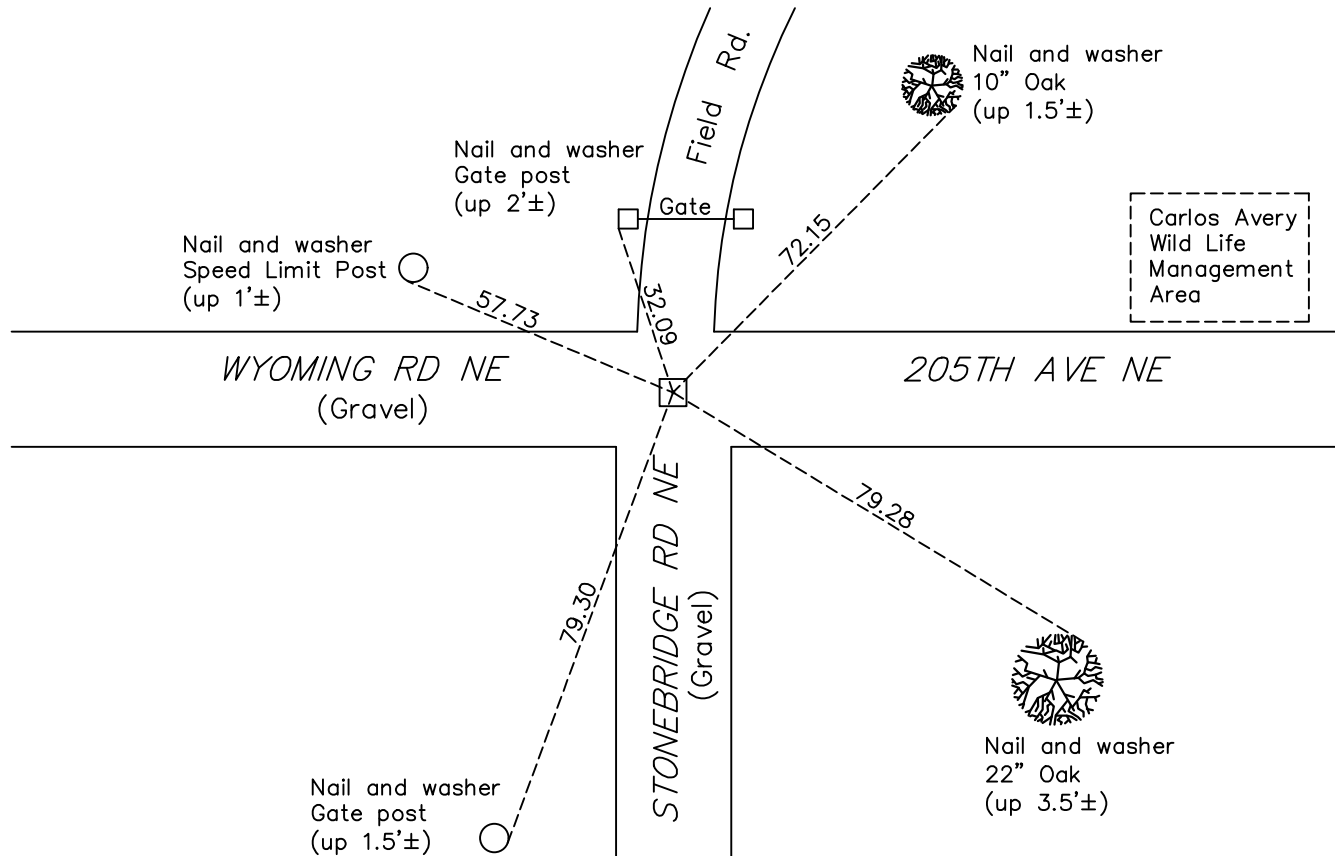
Southeast Corner of Sec. 14 Township 33 Range 22

On the 14th day of August, 1975, the described corner was evidenced by a granite monument

and to perpetuate the location of said corner, at the exact location thereof, a permanent marker was placed consisting of the same granite monument

AND on the 15th day of April, 2022, said permanent marker was found down 0.9'± with an "X" chiseled into the top and the ties were updated

Updated reference ties are as shown below.



N.A.D. 1983 Coordinates
(1996 Adjustment)

County Project Coordinates	
Northing	<u>211382.8752</u>
Easting	<u>558190.2553</u>
Date	<u>5/05/04</u>

Revision Date
4/19/2022

I hereby certify that this United States public land survey monument record is correct and complete to the best of my knowledge and belief.
David Zieglmeier Date 12/11/23
 David Zieglmeier Anoka County Surveyor
 Minnesota License Number 46179

HISTORY OF GOVERNMENT CORNER

Page No. 71

County of Anoka

State of Minnesota

Southeast Corner of Sec. 14 Township 33 Range 22

CORNER HISTORY:

December 16, 1909 - Found monument and updated ties.

August 14, 1975 - Found granite monument down 0.5'± and updated ties. Placed a 1/2" iron pipe on North side.

July 25, 1978 - Found granite monument and updated ties.

August 5, 1981 - Found granite monument and updated ties.

October 18, 1990 - Found granite monument and updated ties.

June 17, 1993 - Found granite monument and updated ties.

May 5, 2004 - Established NAD 1983 (1996 adj.) Anoka County project coordinates by static GPS methods.

December 10, 2013 - Found granite monument down 0.6'. Verified position by VRS GPS methods. Updated ties.

May 9, 2019 - Found granite monument down 0.6'±. Verified position by VRS GPS methods. Updated ties.

April 15, 2022 - Found granite monument down 0.9'±. Verified position by VRS GPS methods. Updated ties.