

CERTIFICATE OF LOCATION OF GOVERNMENT CORNER

County of Anoka

State of Minnesota

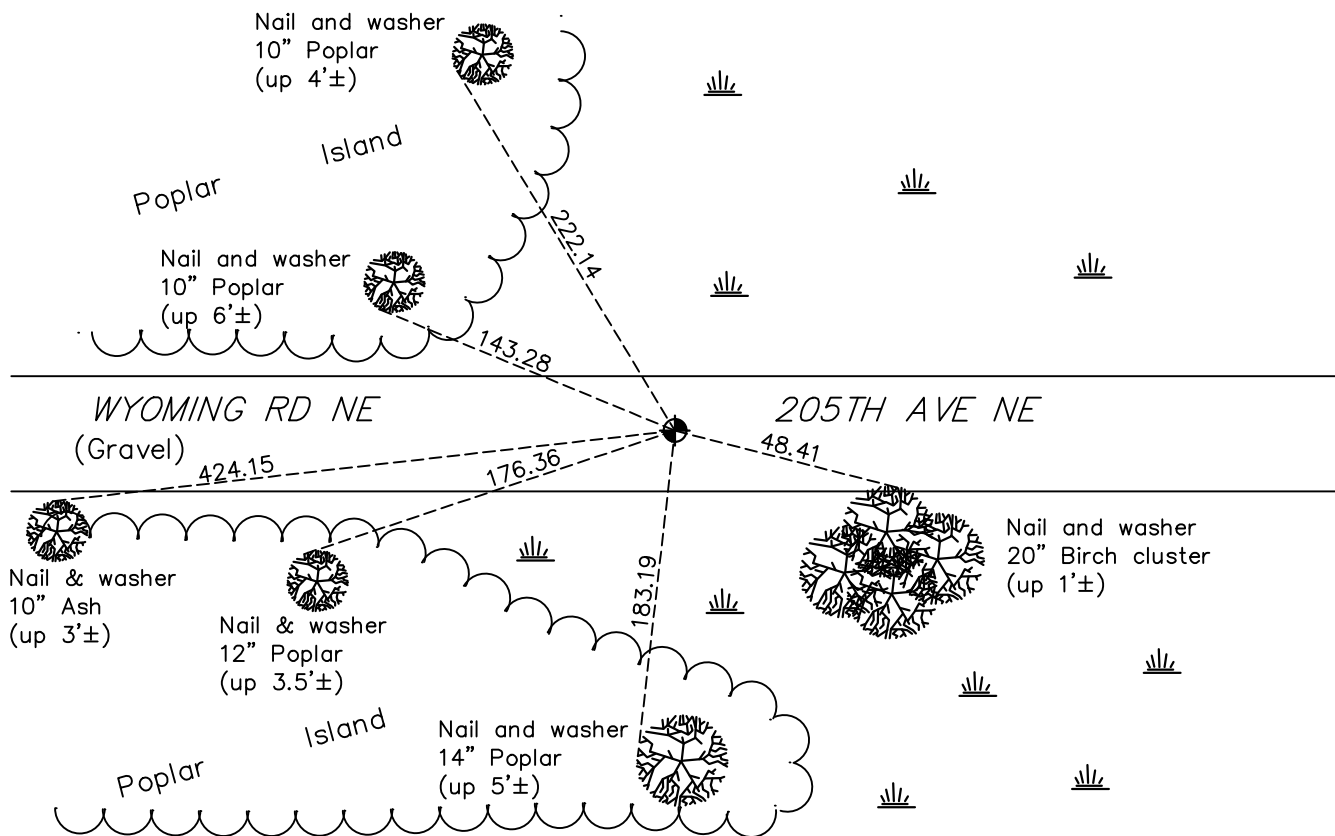
South $\frac{1}{4}$ Corner of Sec. 14 Township 33 Range 22

On the 31st day of March, 1980, the described corner was evidenced by area resurvey

and to perpetuate the location of said corner, at the exact location thereof, a permanent marker was placed consisting of a 1/2" iron pipe and replaced with a cast iron monument on 5/20/2004

AND on the 15th day of April, 2022, said permanent marker was found down 0.7'± and the ties were updated

Updated reference ties are as shown below.



N.A.D. 1983 Coordinates
(1996 Adjustment)

County Project Coordinates	
Northing	<u>211457.3521</u>
Easting	<u>555506.1658</u>
Date	<u>5/20/04</u>

Revision Date
4/19/2022

I hereby certify that this United States public land survey monument record is correct and complete to the best of my knowledge and belief.
David Zieglmeier Date 12/11/23
 David Zieglmeier Anoka County Surveyor
 Minnesota License Number 46179

HISTORY OF GOVERNMENT CORNER

Page No. 72

County of Anoka

State of Minnesota

South 1/4 Corner of Sec. 14 Township 33 Range 22

CORNER HISTORY:

March 31, 1980 - Set 1/2" iron pipe down 0.4'± using area resurvey and established ties to iron pipe.

August 5, 1987 - Found 1/2" iron pipe and updated ties.

May 20, 2004 - Found 1/2" iron pipe and replaced with a cast iron monument down 1.5'±. Updated ties.
Established NAD 1983 (1996 adj.) Anoka County project coordinates by static GPS methods.

December 10, 2013 - Found cast iron monument down 0.8'±. Verified position by VRS GPS methods. Updated ties.

June 4, 2019 - Found cast iron monument down 0.8'±. Verified position by VRS GPS methods. Updated ties.

April 15, 2022 - Found cast iron monument down 0.7'±. Verified position by VRS GPS methods. Updated ties.