

CERTIFICATE OF LOCATION OF GOVERNMENT CORNER

County of Anoka

State of Minnesota

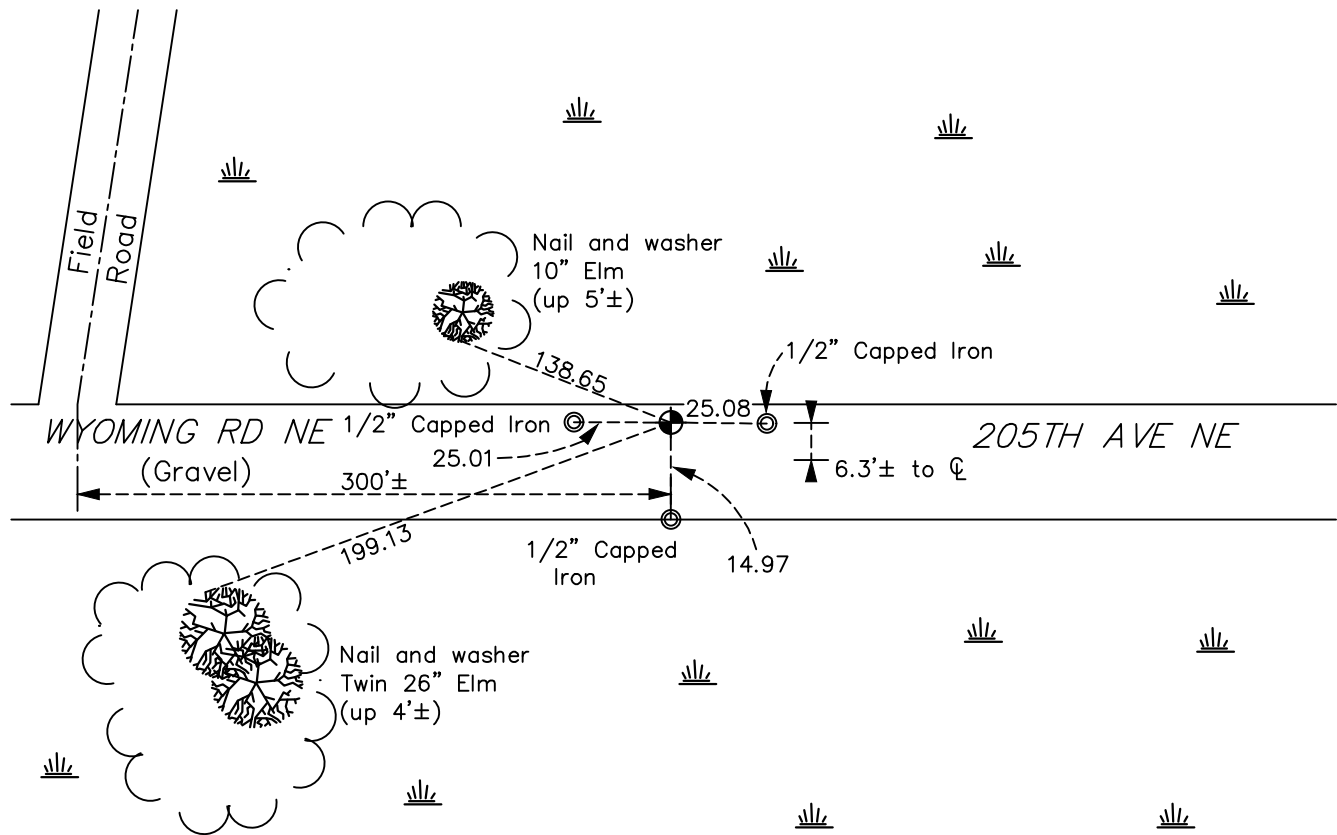
Southeast Corner of Sec. 15 Township 33 Range 22

On the 30th day of July, 1975, the described corner was evidenced by a granite monument with 1/2" iron pipes on the north and south sides

and to perpetuate the location of said corner, at the exact location thereof, a permanent marker was placed consisting of a cast iron monument (down 1.5'±) on top of the granite monument (down 4'±)

AND on the 6th day of July, 2023, said permanent marker was adjusted same cast iron monument raising to 0.7'± below road surface. Set additional ties after adjusting.

Updated reference ties are as shown below.



Revision Date
10/05/2023

N.A.D. 1983 Coordinates
 (1996 Adjustment)

County Project Coordinates	
Northing	<u>211529.4686</u>
Easting	<u>552817.1347</u>
Date	<u>5/05/04</u>

I hereby certify that this United States public land survey monument record is correct and complete to the best of my knowledge and belief.
David Zieglmeier Date 12/11/23
 David Zieglmeier Anoka County Surveyor
 Minnesota License Number 46179

HISTORY OF GOVERNMENT CORNER

Page No. 73

County of Anoka

State of Minnesota

Southeast Corner of Sec. 15 Township 33 Range 22

CORNER HISTORY:

February 25, 1972 - Found witness evidence consisting of an iron bar 33' to the north and a angle iron set in concrete 33' to south of corner position. no monument found.

July 30, 1975 - Found granite monument down 1.5'± in dirt road 33' from both north and south irons.

August 5, 1981 - Found granite monument and updated ties.

May 5, 2004 - Found granite monument down 4'± with 1/2" iron pipes on north and south faces. Set cast iron monument on top of granite down 1.5'±. Established NAD 1983 (1996 adj.) Anoka County project coordinates by static GPS methods.

April 8, 2014 - Found cast iron monument down 1.5'±. Verified position by VRS GPS methods. Updated ties.

June 4, 2019 - Found cast iron monument down 1.5'±. Verified position by VRS GPS methods. No corner ties available.

April 15, 2022 - Found cast iron monument down 1.5'±. Verified position by VRS GPS methods. No corner ties available.

July 6, 2023 - Found cast iron monument down 1.5'±. Adjusted same cast iron monument raising to 0.7'± below road surface to published coordinates with ACS RTK GPS method. Access to established ties not available. Set new 1/2" capped irons to West, South & East of CIM.