

CERTIFICATE OF LOCATION OF GOVERNMENT CORNER

County of Anoka

State of Minnesota

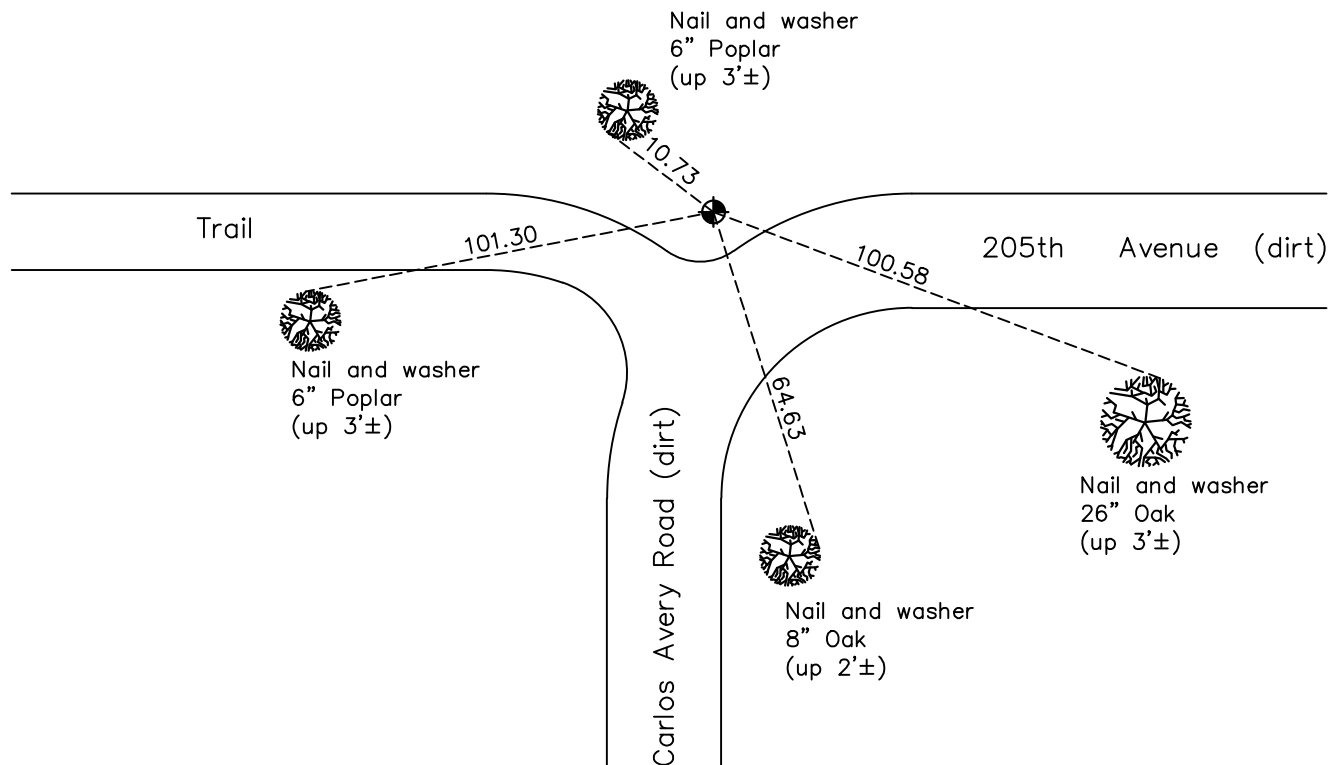
South 1/4 Corner of Sec. 15 Township 33 Range 22

On the 25th day of February, 1972, the described corner was evidenced by a concrete monument

and to perpetuate the location of said corner, at the exact location thereof, a permanent marker was placed consisting of a cast iron monument

AND on the 4th day of June, 2019, said permanent marker was found down 2.5'± and the ties were updated

Updated reference ties are as shown below.



Revision Date

6/4/2019

N.A.D. 1983 Coordinates
(1996 Adjustment)

County Project Coordinates

Northing 211465.4516

Easting 550153.1907

Date 4/28/04

I hereby certify that this United States public land survey monument record is correct and complete to the best of my knowledge and belief.

David M Zieglmeier Date 8/27/21

David Zieglmeier Anoka County Surveyor

Minnesota License Number 46179

HISTORY OF GOVERNMENT CORNER

Page No. 74

County of Anoka

State of Minnesota

South 1/4 Corner of Sec. 15 Township 33 Range 22

CORNER HISTORY:

February 25, 1972 - Found concrete monument and updated ties.

July 25, 1975 - Found concrete monument and updated ties.

August 1975 - Found concrete monument and replaced with a cast iron monument down 0.5'±.

July 26, 1978 - Found cast iron monument and updated ties.

August 5, 1981 - Found cast iron monument and updated ties.

October 18, 1990 - Found cast iron monument and updated ties.

June 17, 1993 - Found cast iron monument and updated ties.

April 28, 2004 - Found cast iron monument and updated ties. Established NAD 1983 (1996 adj.) Anoka County project coordinates by static GPS methods.

December 9, 2013 - Found cast iron monument down 2.5'±. Verified position by VRS GPS methods. Updated ties.

June 4, 2019 - Found cast iron monument down 2.5'±. Verified position by VRS GPS methods. Updated ties.