

CERTIFICATE OF LOCATION OF GOVERNMENT CORNER

County of Anoka State of Minnesota

Southwest Corner of Sec. 16 Township 33 Range 22

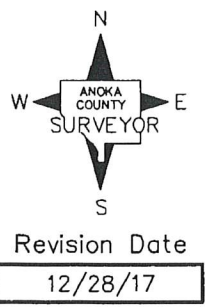
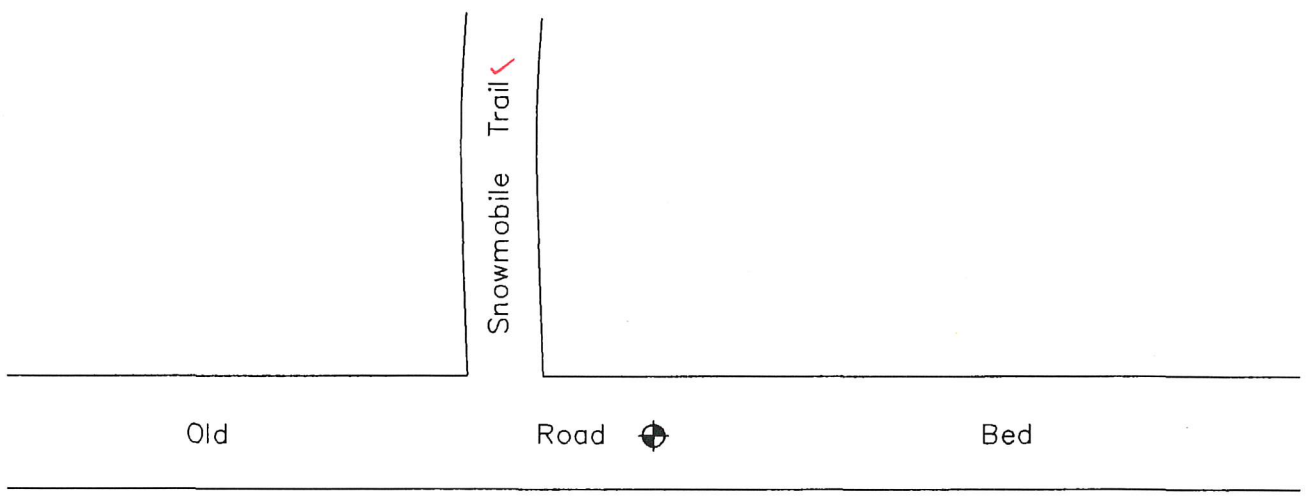
On the 15th day of August, 1975, the described corner was evidenced by a concrete monument

and to perpetuate the location of said corner, at the exact location thereof, a permanent marker was placed consisting of a cast iron monument

AVITS - VRS. 2

AND on the ^{25th} 30th day of ^{April} August, ²⁰²² 2017, said permanent marker was found broken. Replaced ^{up 0.2' w/out cap} w/ 2"X7' sq. steel Telespar mont. down 0.5'± w/ "Co. Surveyor" cap & punchmark. No ties available.

Updated reference ties are as shown below.



N.A.D. 1983 Coordinates
(1996 Adjustment)

County Project Coordinates	
Northing	<u>211398.0422</u>
Easting	<u>542131.6604</u>
Date	<u>4/15/04</u>

ERROR N: -0.008 E: +0.052

I hereby certify that this United States public land survey monument record is correct and complete to the best of my knowledge and belief.

Larry D. Hoium Date 12/28/17

Larry D. Hoium, Anoka County Surveyor
Minnesota License Number 18165

300: 0.02

N: 211398.034

E: 542131.712

CERTIFICATE OF LOCATION OF GOVERNMENT CORNER

County of Anoka State of Minnesota

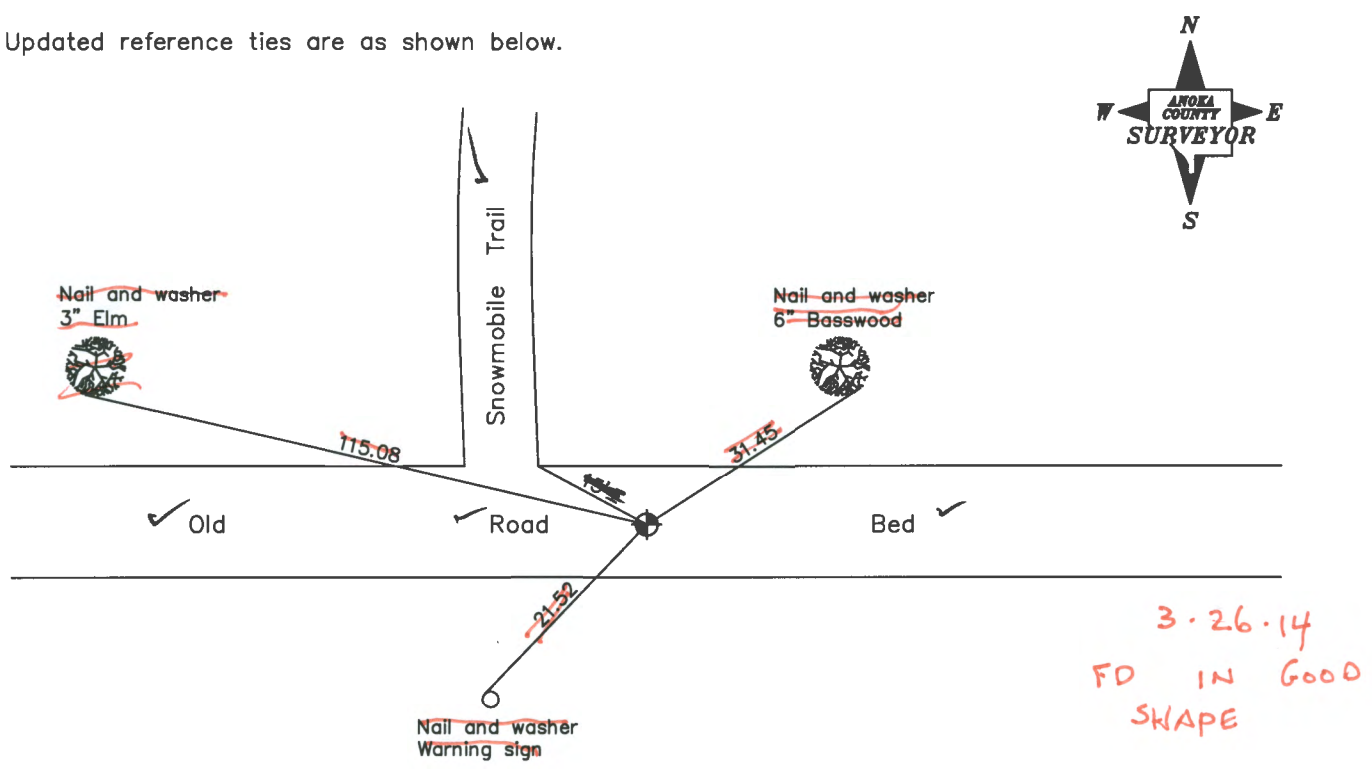
Southwest Corner of Sec. 16 Township 33 Range 22

On the 15th day of August, 1975, the described corner was evidenced by a concrete monument

and to perpetuate the location of said corner, at the exact location thereof, a permanent marker was placed consisting of ~~a cast iron monument~~ 7' TELSPAR w/ CAP + PUNCHMARK

AND on the ___ day of _____, _____, said permanent marker was _____

Updated reference ties are as shown below.



8-30-17 JS S.S. FD MON BROKEN
RESET 7' TELSPAR w/CAP + PUNCHMARK
DOWN 0.5' (NO TIES - NOTHING AROUND)

Revised date
7/02/93

N.A.D. 1983 Coordinates (1996 Adjustment)	
County Project Coordinates	
Northing	211398.0422
Easting	542131.6604
Date	4/15/04

I hereby certify that this United States public land survey monument record is correct and complete to the best of my knowledge and belief.

Date _____
_____, Anoka County Surveyor
Minnesota License Number _____