

CERTIFICATE OF LOCATION OF GOVERNMENT CORNER

County of Anoka

State of Minnesota

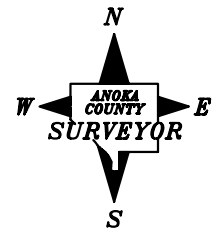
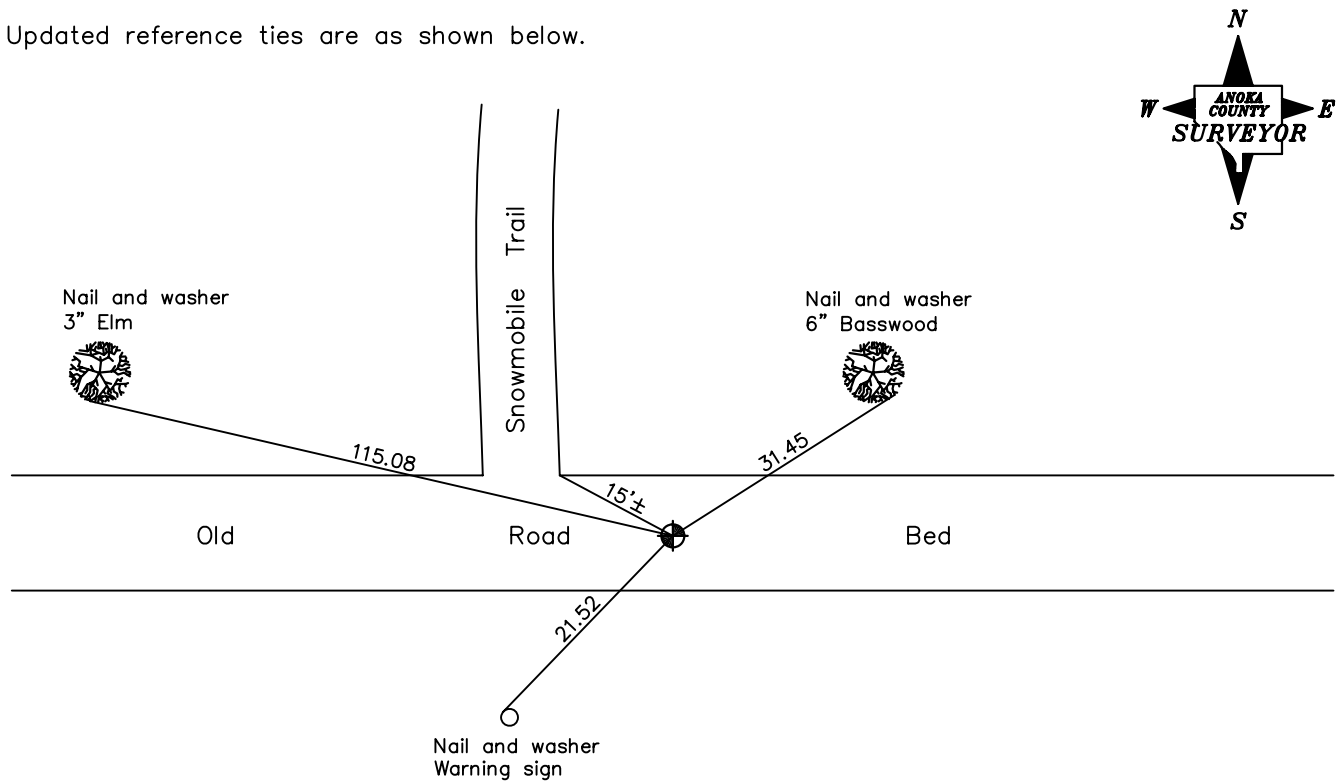
Southwest Corner of Sec. 16 Township 33 Range 22

On the 15th day of August, 1975, the described corner was evidenced by a concrete monument

and to perpetuate the location of said corner, at the exact location thereof, a permanent marker was placed consisting of a cast iron monument

AND on the ___ day of _____, _____, said permanent marker was _____

Updated reference ties are as shown below.



Revised date

7/02/93

N.A.D. 1983 Coordinates
(1996 Adjustment)

County Project Coordinates	
Northing	211398.0422
Easting	542131.6604
Date	4/15/04

I hereby certify that this United States public land survey monument record is correct and complete to the best of my knowledge and belief.

_____ Date _____
 _____, Anoka County Surveyor
 Minnesota License Number _____