

CERTIFICATE OF LOCATION OF GOVERNMENT CORNER

County of Anoka

State of Minnesota

Witness Corner of Sec. 16 Township 33 Range 22

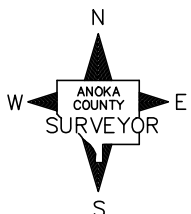
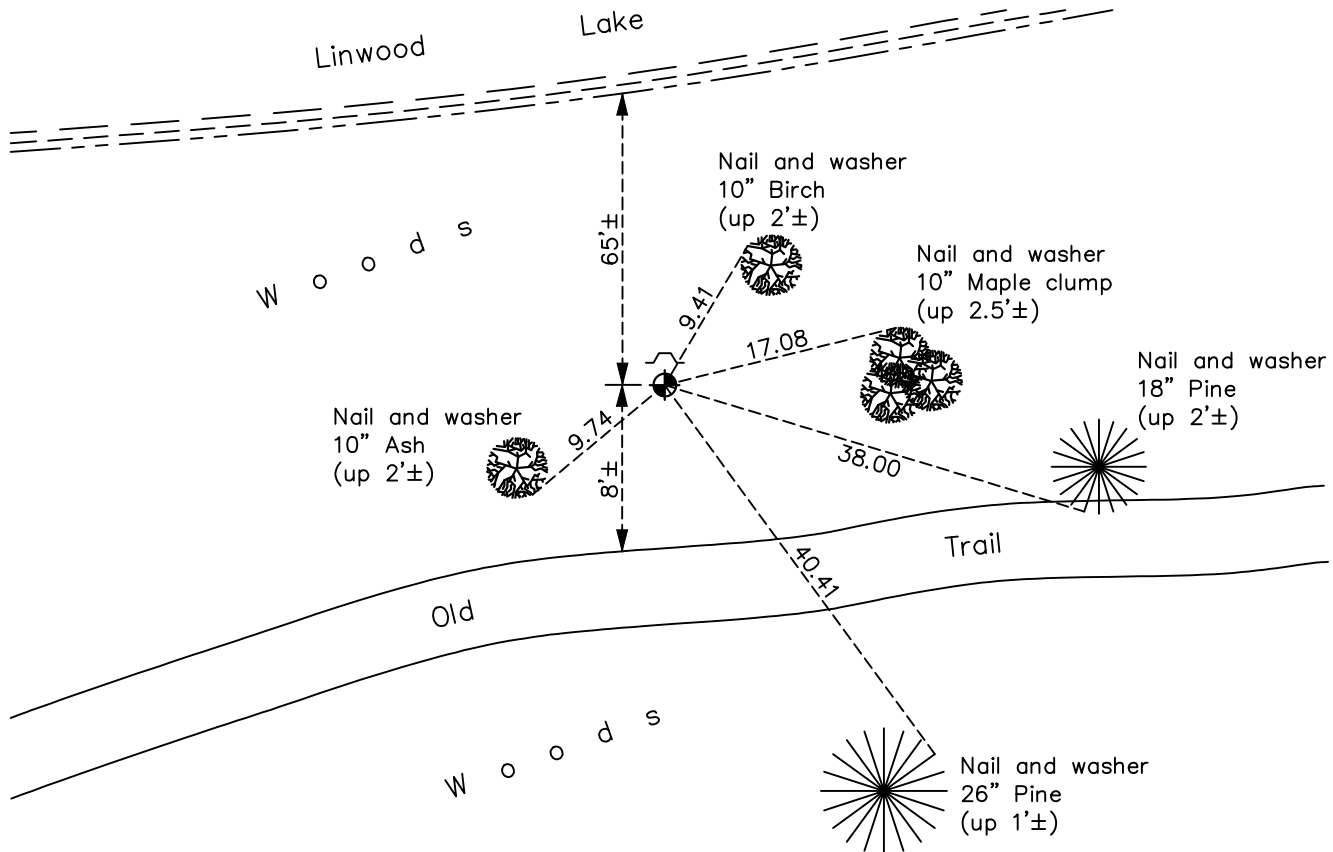
(on west line of section)

On the 22nd day of April, 1981, the described corner was evidenced by area resurvey

and to perpetuate the location of said corner, at the exact location thereof, a permanent marker was placed consisting of a cast iron monument with a sign and post on the north side

AND on the 6th day of May, 2019, said permanent marker was found down 0.2'± and the ties were updated

Updated reference ties are as shown below.



Revision Date

6/10/19

N.A.D. 1983 Coordinates
(1996 Adjustment)

County Project Coordinates	
Northing	<u>212785.5304</u>
Easting	<u>542147.2682</u>
Date	<u>4/27/04</u>

I hereby certify that this United States public land survey monument record is correct and complete to the best of my knowledge and belief.

David M Zieglmeier Date 8/27/21

David Zieglmeier Anoka County Surveyor
Minnesota License Number 46179

HISTORY OF GOVERNMENT CORNER

Page No. 77A

County of Anoka

State of Minnesota

Witness Corner of Sec. 16 Township 33 Range 22
(on west line of section)

CORNER HISTORY:

April 22, 1981 - Set cast iron monument using area resurvey. Established ties to monument.

June 21, 1985 - Found cast iron monument and updated ties.

August 14, 1987 - Found cast iron monument and updated ties.

June 15, 1993 - Found cast iron monument and updated ties.

April 27, 2004 - Established NAD 1983 (1996 adj.) Anoka County project coordinates by static GPS methods.

December 13, 2013 - Found cast iron monument and updated ties.

May 6, 2019 - Found cast iron monument down 0.2'± and updated ties.