

CERTIFICATE OF LOCATION OF GOVERNMENT CORNER

County of Anoka

State of Minnesota

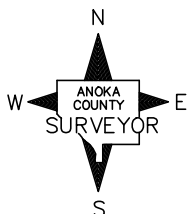
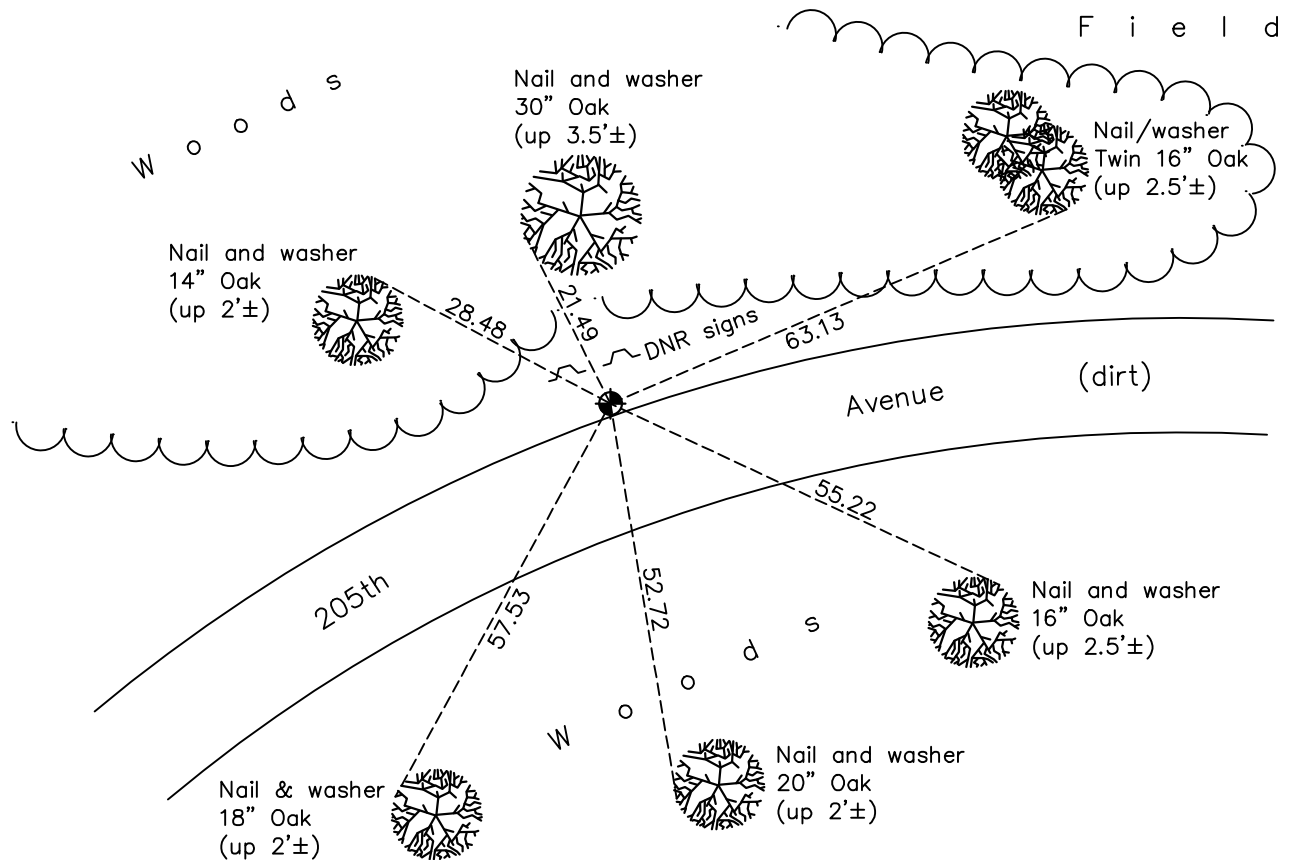
North $\frac{1}{4}$ Corner of Sec. 20 Township 33 Range 22

On the 23rd day of April, 1965, the described corner was evidenced by a 4" concrete monument

and to perpetuate the location of said corner, at the exact location thereof, a permanent marker was placed consisting of a cast iron monument with DNR signs and posts on the northwest side

AND on the 26th day of February, 2019, said permanent marker was found flush and the ties were updated

Updated reference ties are as shown below.



Revision Date

6/10/19

N.A.D. 1983 Coordinates
(1996 Adjustment)

County Project Coordinates	
Northing	<u>211415.0687</u>
Easting	<u>539482.6306</u>
Date	<u>4/15/04</u>

I hereby certify that this United States public land survey monument record is correct and complete to the best of my knowledge and belief.

David M Zieglmeier Date 8/27/21

David Zieglmeier Anoka County Surveyor
Minnesota License Number 46179

HISTORY OF GOVERNMENT CORNER

Page No. 78

County of Anoka

State of Minnesota

North 1/4 Corner of Sec. 20 Township 33 Range 22

CORNER HISTORY:

April 23, 1965 - Found 4" square concrete monument up 0.2'± with the top broken off. Updated ties. Placed iron pipe on the north side.

July 6, 1967 - Found broken concrete monument and updated ties.

June 25, 1972 - Found broken concrete monument and replaced with a cast iron monument up 0.1'± using the corner ties. Updated ties.

July 28, 1975 - Found cast iron monument and updated ties.

July 26, 1978 - Found cast iron monument and updated ties.

August 6, 1981 - Found cast iron monument and updated ties.

August 24, 1984 - Found cast iron monument and updated ties.

August 6, 1987 - Found cast iron monument and updated ties.

July 2, 1993 - Found cast iron monument and updated ties.

April 15, 2004 - Established NAD 1983 (1996 adj.) Anoka County project coordinates by static GPS methods.

December 13, 2013 - Found cast iron monument and updated ties.

February 26, 2019 - Found cast iron monument flush. Verified position by VRS GPS methods. Updated ties.