

CERTIFICATE OF LOCATION OF GOVERNMENT CORNER

County of Anoka

State of Minnesota

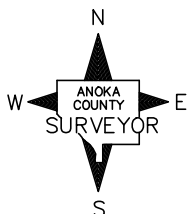
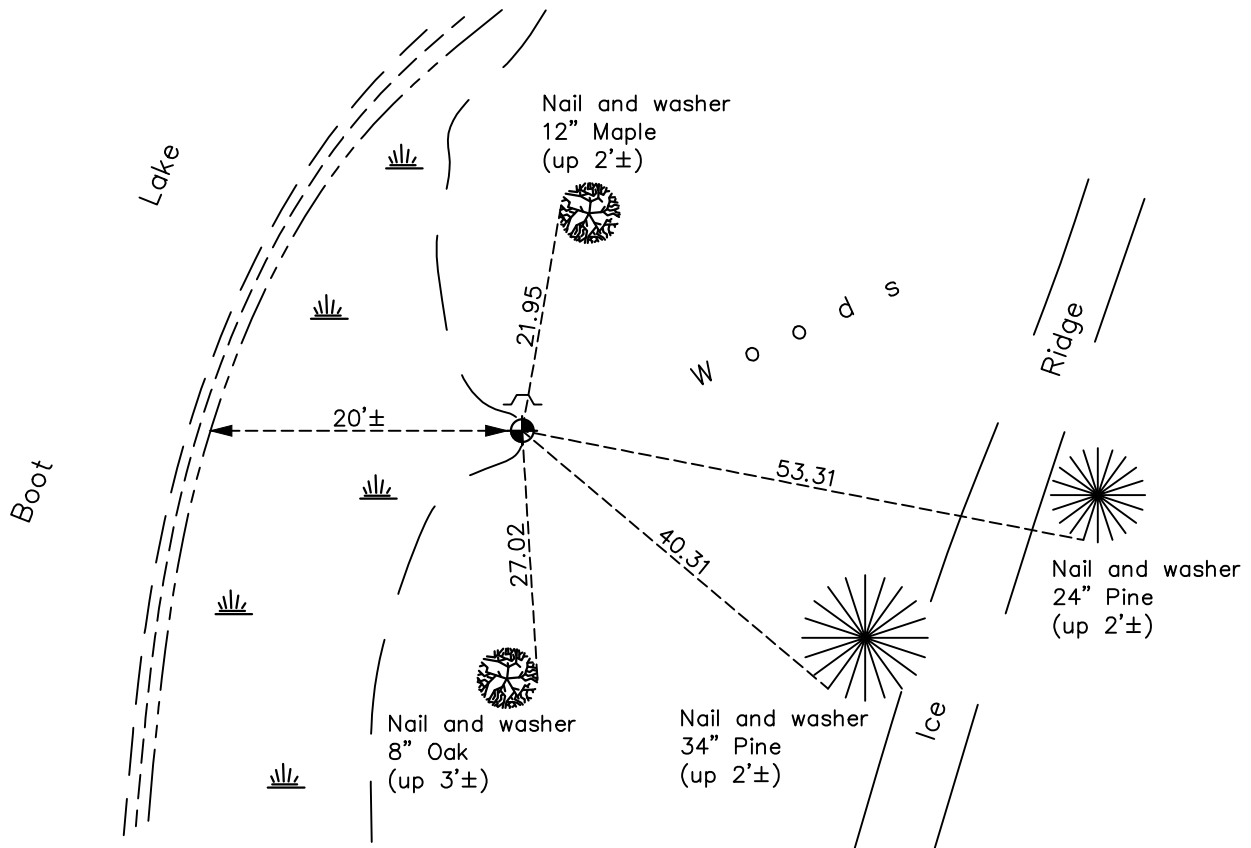
Witness Corner of Sec. 20 Township 33 Range 22
(on north line of section)

On the 10th day of November, 1970, the described corner was evidenced by area resurvey

and to perpetuate the location of said corner, at the exact location thereof, a permanent marker was placed consisting of a cast iron monument with a sign and post on the north side

AND on the 10th day of May, 2019, said permanent marker was found and the ties were updated

Updated reference ties are as shown below.



Revision Date

6/11/19

N.A.D. 1983 Coordinates
(1996 Adjustment)

County Project Coordinates	
Northing	<u>211425.2889</u>
Easting	<u>536864.2202</u>
Date	<u>2/07/05</u>

I hereby certify that this United States public land survey monument record is correct and complete to the best of my knowledge and belief.

David M Zieglmeier Date 8/27/21

David Zieglmeier Anoka County Surveyor
Minnesota License Number 46179

HISTORY OF GOVERNMENT CORNER

Page No. 80B

County of Anoka

State of Minnesota

Witness Corner of Sec. 20 Township 33 Range 22
(on north line of section)

CORNER HISTORY:

November 10, 1970 - Set cast iron monument flush using area resurvey. Established ties to monument.

June 24, 1971 - Found cast iron monument and updated ties.

July 31, 1975 - Found cast iron monument and updated ties.

August 4, 1978 - Found cast iron monument and updated ties.

August 25, 1981 - Found cast iron monument and updated ties.

October 18, 1991 - Found cast iron monument and updated ties.

July 17, 1995 - Found cast iron monument and updated ties.

February 7, 2005 - Established NAD 1983 (1996 adj.) Anoka County project coordinates by static GPS methods.

January 10, 2014 - Found cast iron monument and updated ties.

May 10, 2019 - Found cast iron monument slightly under water. Verified position by VRS GPS methods. Updated ties.