

CERTIFICATE OF LOCATION OF GOVERNMENT CORNER

County of Anoka

State of Minnesota

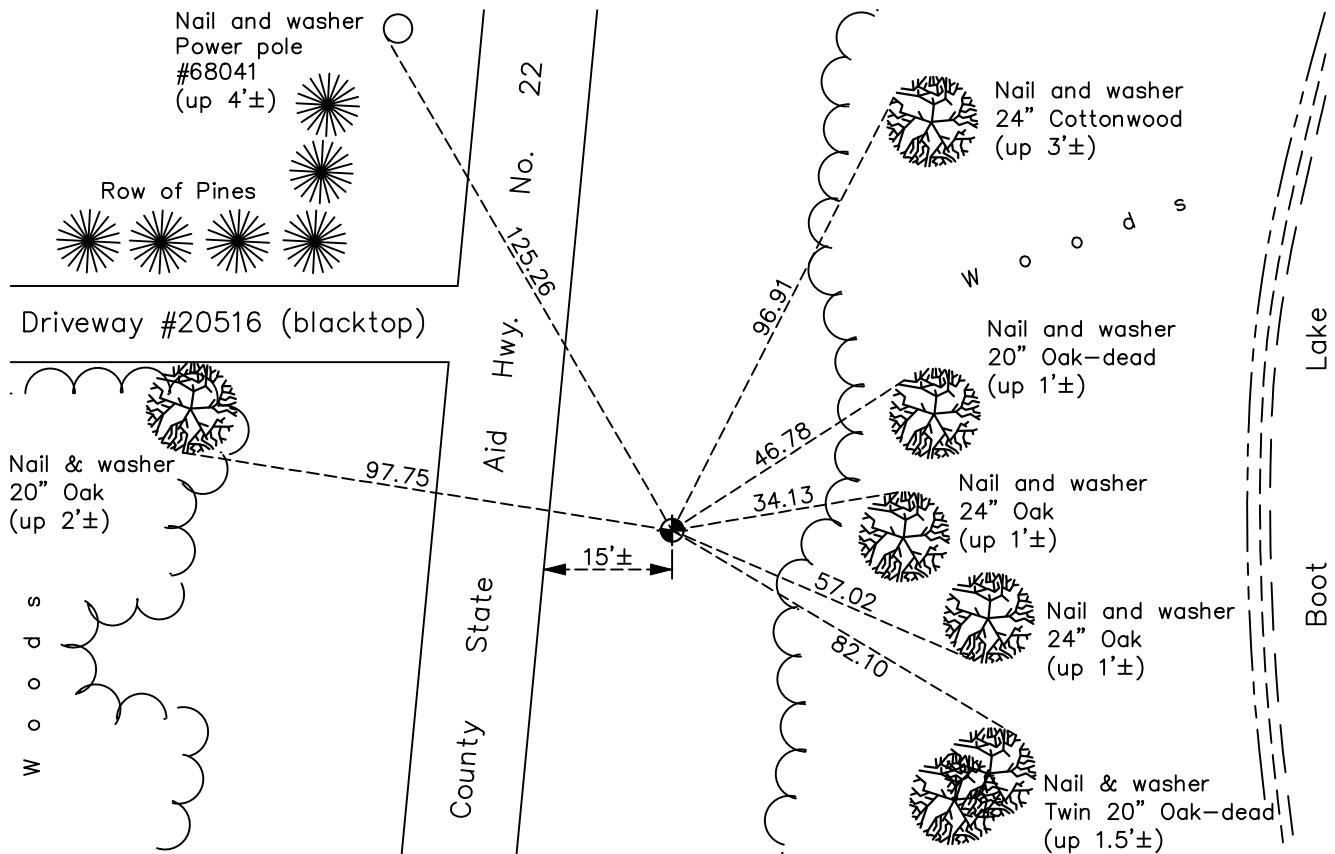
North $\frac{1}{4}$ Corner of Sec. 19 Township 33 Range 22

On the 3rd day of November, 1970, the described corner was evidenced by area resurvey

and to perpetuate the location of said corner, at the exact location thereof, a permanent marker was placed consisting of a cast iron monument

AND on the 13th day of March, 2019, said permanent marker was found down 1'± and the ties were updated

Updated reference ties are as shown below.



Revision Date

6/12/19

N.A.D. 1983 Coordinates
(1996 Adjustment)

County Project Coordinates	
Northing	<u>211443.6519</u>
Easting	<u>534107.8938</u>
Date	<u>4/12/04</u>

I hereby certify that this United States public land survey monument record is correct and complete to the best of my knowledge and belief.

David M Zieglmeier Date 8/27/21

David Zieglmeier Anoka County Surveyor
Minnesota License Number 46179

HISTORY OF GOVERNMENT CORNER

Page No. 81

County of Anoka

State of Minnesota

North 1/4 Corner of Sec. 19 Township 33 Range 22

CORNER HISTORY:

November 3, 1970 - Set cast iron monument down 0.4'± using area resurvey. Established ties to monument.

June 24, 1971 - Found cast iron monument and updated ties.

July 29, 1975 - Found cast iron monument and updated ties.

July 26, 1978 - Found cast iron monument and updated ties.

August 11, 1981 - Found cast iron monument and updated ties.

August 28, 1984 - Found cast iron monument and updated ties.

June 9, 1989 - Reset cast iron monument down 0.5'± after gas pipeline construction. Updated ties.

June 15, 1993 - Found cast iron monument and updated ties.

April 12, 2004 - Established NAD 1983 (1996 adj.) Anoka County project coordinates by static GPS methods.

December 5, 2013 - Found cast iron monument down 1'±. Verified position by VRS GPS methods. Updated ties.

March 13, 2019 - Found cast iron monument down 1'±. Verified position by VRS GPS methods. Updated ties.