

# CERTIFICATE OF LOCATION OF GOVERNMENT CORNER

County of Anoka

State of Minnesota

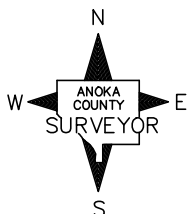
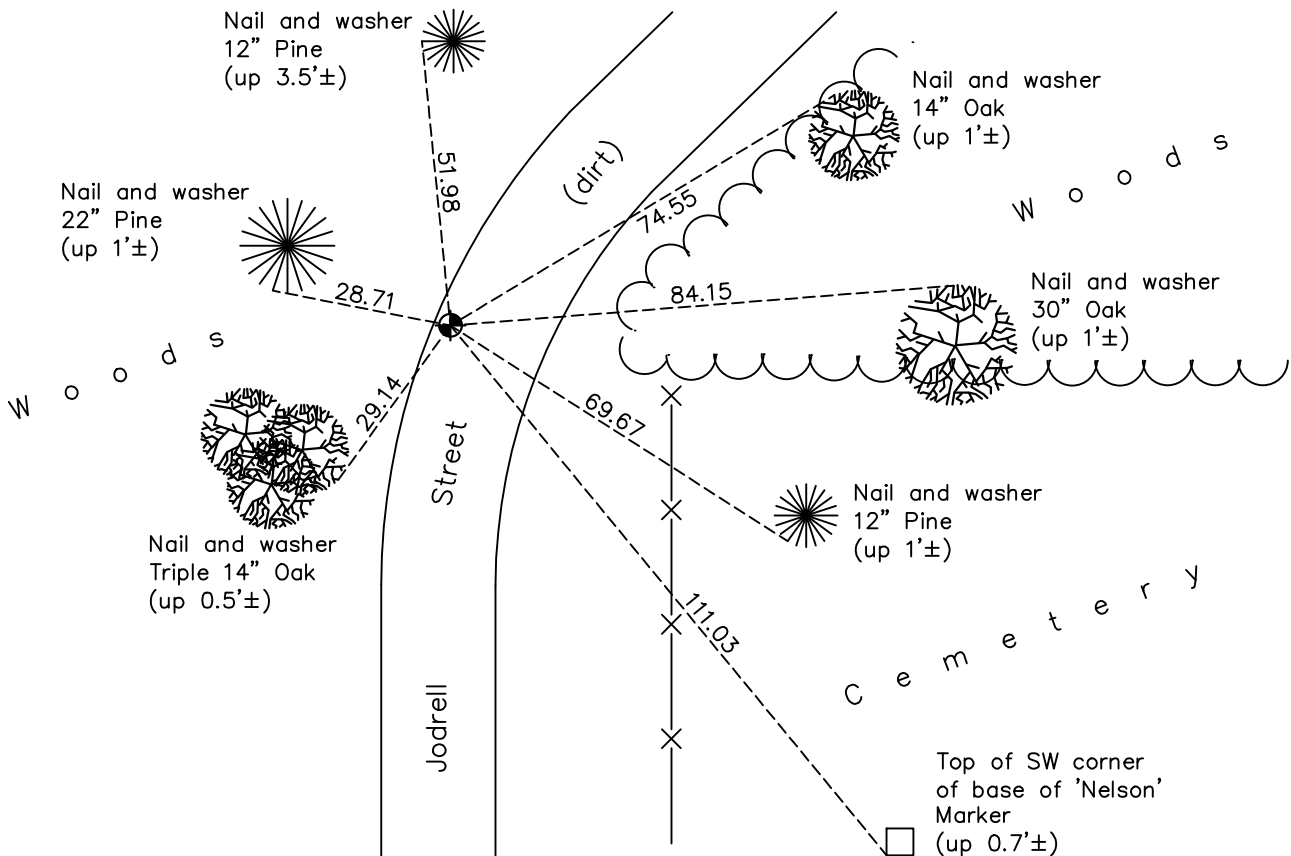
## West 1/4 Corner of Sec. 20 Township 33 Range 22

On the 3rd day of November, 1970, the described corner was evidenced by cemetery  
platting and area resurvey

and to perpetuate the location of said corner, at the exact location thereof, a permanent marker was placed consisting of a cast iron monument (down 1'±)

AND on the 17th day of April, 2019, said permanent marker was found down 2'± and  
the ties were updated

Updated reference ties are as shown below.



Revision Date

6/12/19

N.A.D. 1983 Coordinates  
(1996 Adjustment)

County Project Coordinates	
Northing	<u>208783.8096</u>
Easting	<u>536858.3165</u>
Date	<u>4/13/04</u>

I hereby certify that this United States public land survey monument record is correct and complete to the best of my knowledge and belief.

*David M Zieglmeier* Date 8/27/21

David Zieglmeier Anoka County Surveyor  
Minnesota License Number 46179

# HISTORY OF GOVERNMENT CORNER

Page No. 85

County of Anoka

State of Minnesota

West 1/4 Corner of Sec. 20 Township 33 Range 22

## **CORNER HISTORY:**

November 3, 1970 - Set cast iron monument down 0.5'± using cemetery platting and area resurvey. Established ties to monument.

June 24, 1971 - Found cast iron monument and updated ties.

July 28, 1975 - Found cast iron monument and updated ties.

July 26, 1978 - Found cast iron monument and updated ties.

August 5, 1981 - Found cast iron monument and updated ties.

August 24, 1984 - Found cast iron monument and updated ties.

April 15, 1987 - Reset cast iron monument down 1'± after road construction. Updated ties.

August 5, 1987 - Found cast iron monument and updated ties.

June 13, 1993 - Found cast iron monument and updated ties.

April 13, 2004 - Established NAD 1983 (1996 adj.) Anoka County project coordinates by static GPS methods.

December 19, 2013 - Found cast iron monument down 2'± and updated ties.

April 17, 2019 - Found cast iron monument down 2'± and updated ties.