

# CERTIFICATE OF LOCATION OF GOVERNMENT CORNER

County of Anoka

State of Minnesota

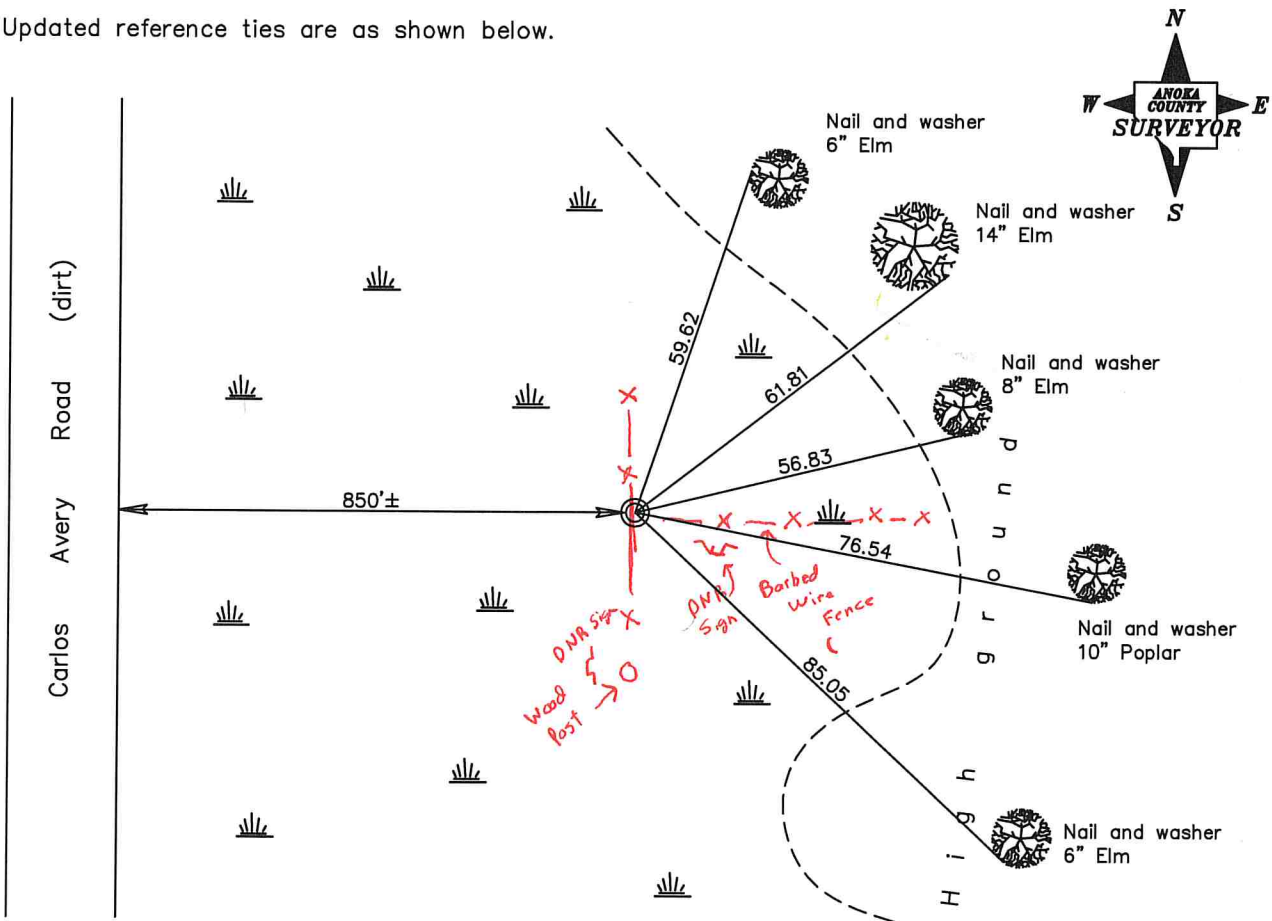
West 1/4 Corner of Sec. 24 Township 33 Range 22

On the 16th day of March, 1977, the described corner was evidenced by a concrete monument

and to perpetuate the location of said corner, at the exact location thereof, a permanent marker was placed consisting of a red and white iron pipe

AND on the 15<sup>th</sup> day of DEC, 2022, said permanent marker was NOT FOUND. OPENED Hole  
Depth 2'± AV/50 - VAS.2

Updated reference ties are as shown below.



Revised date

3/16/77

N.A.D. 1983 Coordinates  
(1996 Adjustment)

County Project Coordinates

Northing 208741.2548

Easting 558227.4198

Date 3/24/05

I hereby certify that this United States public land survey monument record is correct and complete to the best of my knowledge and belief.

\_\_\_\_\_, Date \_\_\_\_\_

\_\_\_\_\_, Anoka County Surveyor

Minnesota License Number \_\_\_\_\_