

# CERTIFICATE OF LOCATION OF GOVERNMENT CORNER

County of Anoka

State of Minnesota

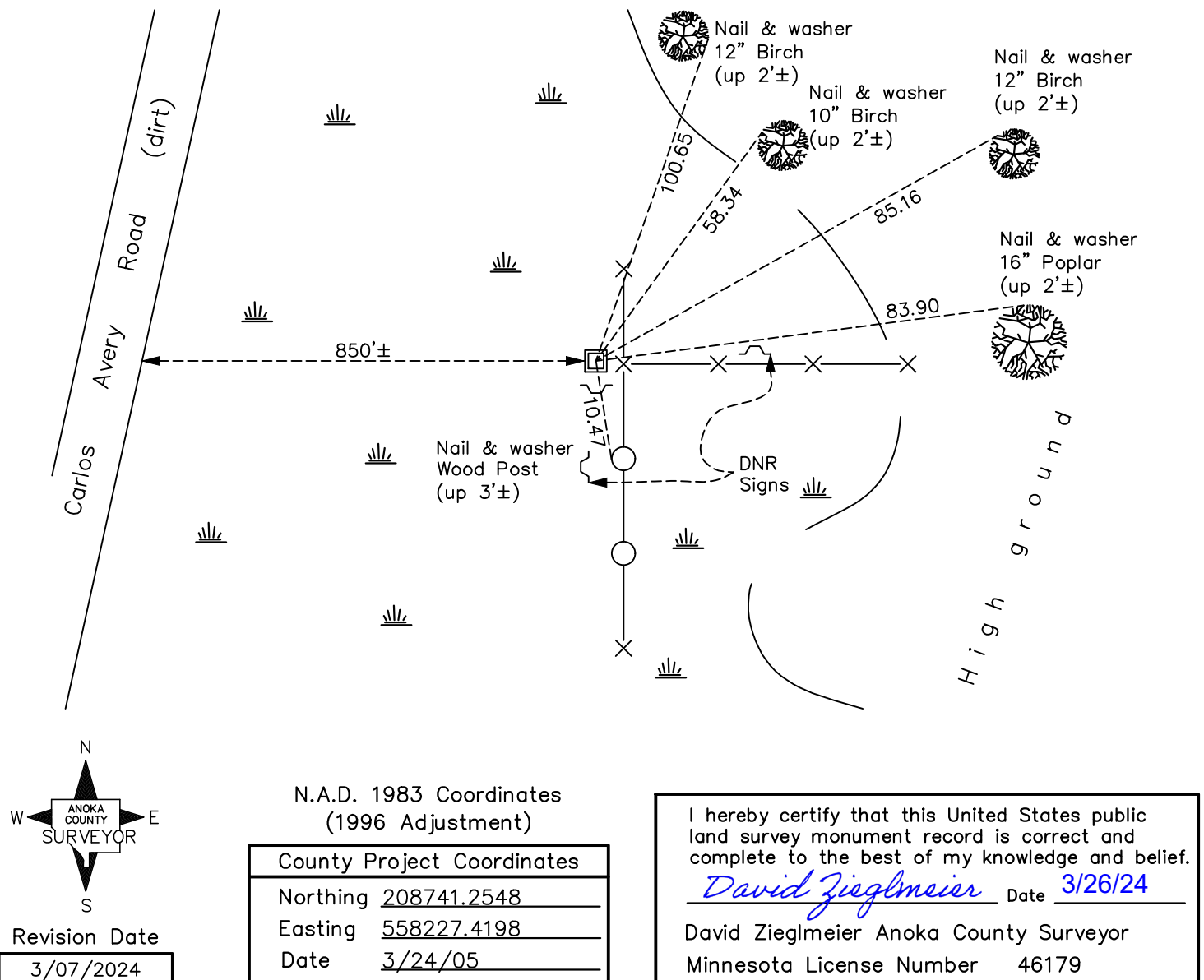
## West 1/4 Corner of Sec. 24 Township 33 Range 22

On the 22nd day of April, 1977, the described corner was evidenced by a concrete  
monument

and to perpetuate the location of said corner, at the exact location thereof, a permanent marker  
was placed consisting of a red and white iron pipe

AND on the 15th day of December, 2023, said permanent marker was found laying down, removed.  
Set Telspar w/ punched cap to published coordinates, up 1'±. Established ties as no historical found.

Updated reference ties are as shown below.



# HISTORY OF GOVERNMENT CORNER

Page No. 89

County of Anoka

State of Minnesota

West 1/4 Corner of Sec. 24 Township 33 Range 22

## **CORNER HISTORY:**

January 1855 - This corner was established by Hiram Taylor, Deputy Surveyor. Taylor marked this position by "set quarter section post" with two bearing trees marked as accessories.

March 16, 1977 - Found concrete monument lying down set for Carlos Avery. Set straight. Established ties.

April 22, 1977 - Found concrete monument and replaced with a red and white iron pipe. Updated ties.

March 24, 2005 - Established NAD 1983 (1996 adj.) Anoka County project coordinates by static GPS methods.

December 1st, 2022 - Monument not found after opening hole in frozen ground searching to depth of 2'±, checking position with VRS GPS method. No previous historical ties located. Pipe found laying down on ground during December 2023 follow-up visit.

December 15, 2023 - Found 3" iron pipe leaning, removed. Replaced with 2"x2"x6' steel Telespar w/ cap and punch mark up 1'±, set to published coordinates position using RTK GPS method. Established ties as no historical ties found. Set sign and post 2'± to south. (Job # 23 - 100)