

CERTIFICATE OF LOCATION OF GOVERNMENT CORNER

County of Anoka

State of Minnesota

East 1/4 Corner of Sec. 24 Township 33 Range 22

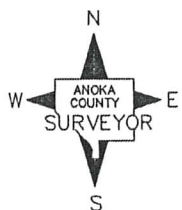
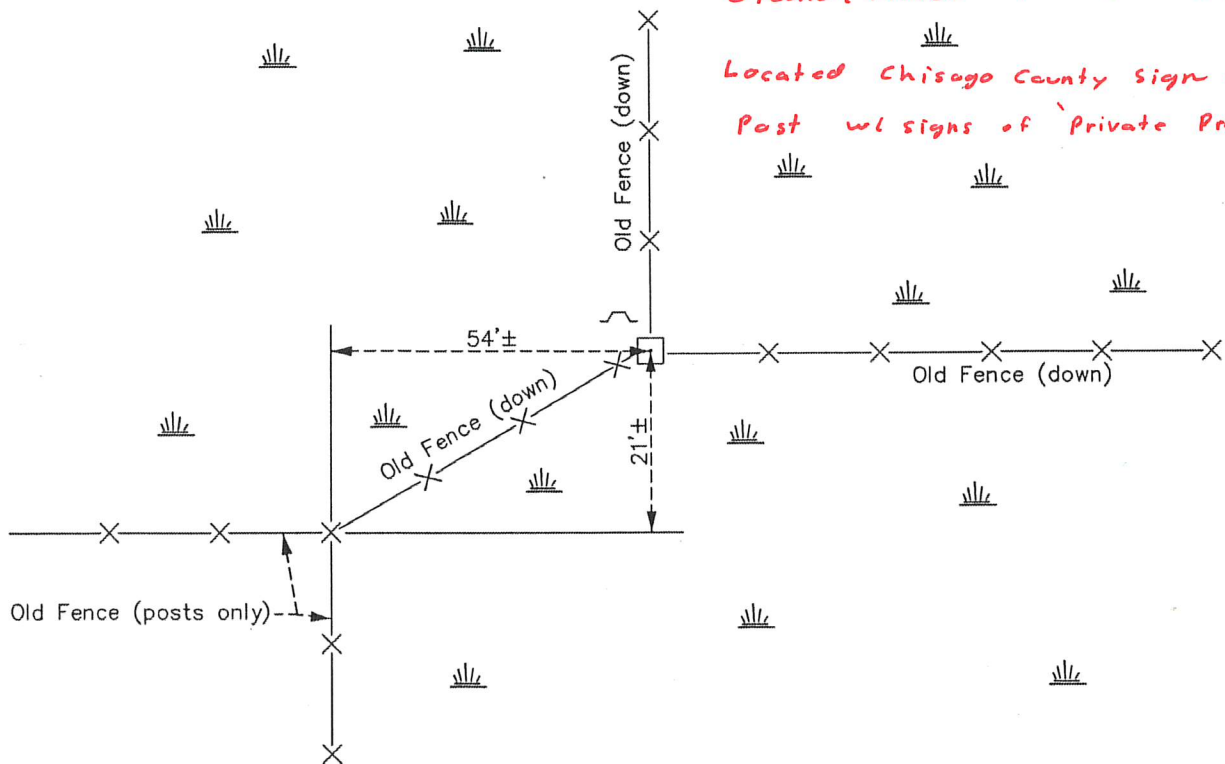
On the 18th day of February, 1977, the described corner was evidenced by a granite monument

and to perpetuate the location of said corner, at the exact location thereof, a permanent marker was placed consisting of the same granite monument with a steel fence post on the north side

AND on the 8th day of March, 2014, said permanent marker was found down 0.5'± below water level with a Chisago County sign and post NW'ly of mont. and the ties were updated

Updated reference ties are as shown below.

*Monument not found down 0.5'±
Ground / Marsh Too Frozen.
Located Chisago County sign and
Post w/ signs of 'Private Property'*



Revision Date

9/08/15

N.A.D. 1983 Coordinates
(1996 Adjustment)

County Project Coordinates

Northing 208576.0121

Easting 563488.2447

Date 1/18/05

I hereby certify that this United States public land survey monument record is correct and complete to the best of my knowledge and belief.

Larry D. Hoium Date 9/08/15

Larry D. Hoium, Anoka County Surveyor

Minnesota License Number 18165