

# CERTIFICATE OF LOCATION OF GOVERNMENT CORNER

County of Anoka

State of Minnesota

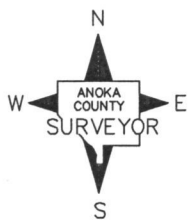
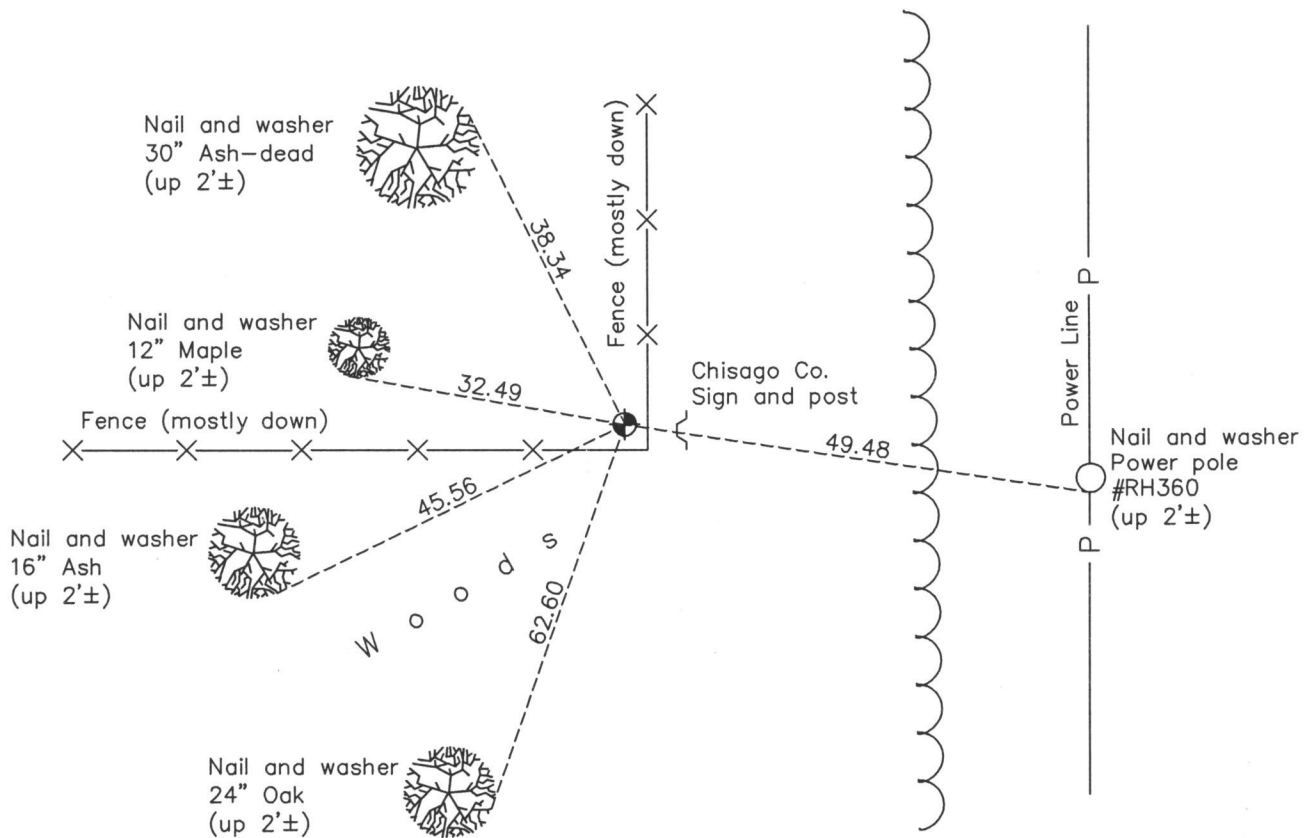
## Northeast Corner of Sec. 25 Township 33 Range 22

On the 18th day of February, 1977, the described corner was evidenced by a cast iron monument

and to perpetuate the location of said corner, at the exact location thereof, a permanent marker was placed consisting of the same cast iron monument with a sign and post on the north side

AND on the 23rd day of April, 2014, said permanent marker was found to be a "Chisago County Land Corner" cast iron monument up 0.2'± and leaning slightly NE'ly w/ sign & post to east

Updated reference ties are as shown below.



Revision Date

9/09/15

N.A.D. 1983 Coordinates  
(1996 Adjustment)

County Project Coordinates	
Northing	205944.8309
Easting	563461.8583
Date	3/29/05

I hereby certify that this United States public land survey monument record is correct and complete to the best of my knowledge and belief.

*Larry D. Hoium* Date 9/09/15

Larry D. Hoium, Anoka County Surveyor

Minnesota License Number 18165