

# CERTIFICATE OF LOCATION OF GOVERNMENT CORNER

County of Anoka

State of Minnesota

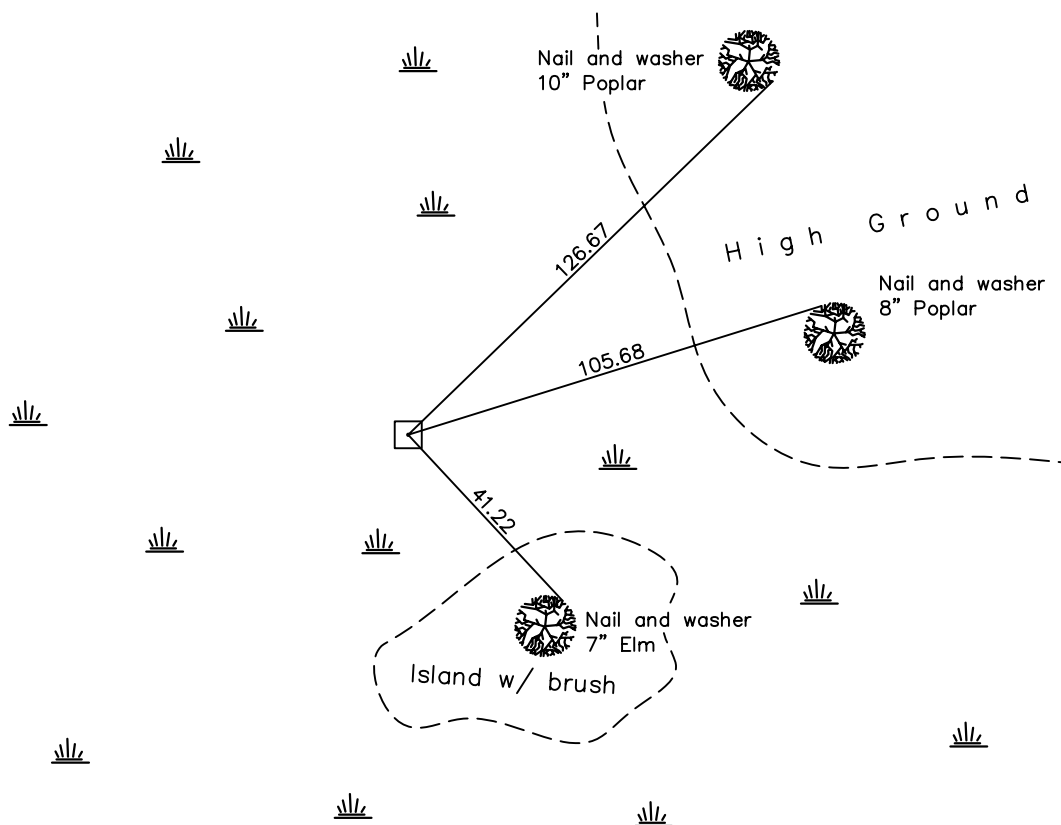
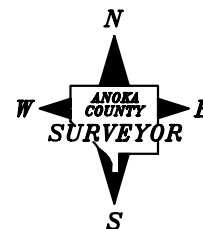
## Northwest Corner of Sec. 25 Township 33 Range 22

On the 20th day of April, 1977, the described corner was evidenced by a concrete monument

and to perpetuate the location of said corner, at the exact location thereof, a permanent marker was placed consisting of the same concrete monument

AND on the \_\_\_ day of \_\_\_\_\_, \_\_\_\_\_, said permanent marker was \_\_\_\_\_

Updated reference ties are as shown below.



Revised date

4/20/77

N.A.D. 1983 Coordinates  
(1996 Adjustment)

County Project Coordinates

Northing 206104.3924

Easting 558220.6824

Date 3/24/05

I hereby certify that this United States public land survey monument record is correct and complete to the best of my knowledge and belief.

\_\_\_\_\_, Date \_\_\_\_\_

\_\_\_\_\_, Anoka County Surveyor

Minnesota License Number \_\_\_\_\_