

CERTIFICATE OF LOCATION OF GOVERNMENT CORNER

County of Anoka

State of Minnesota

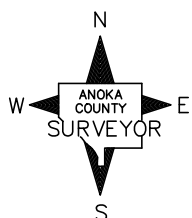
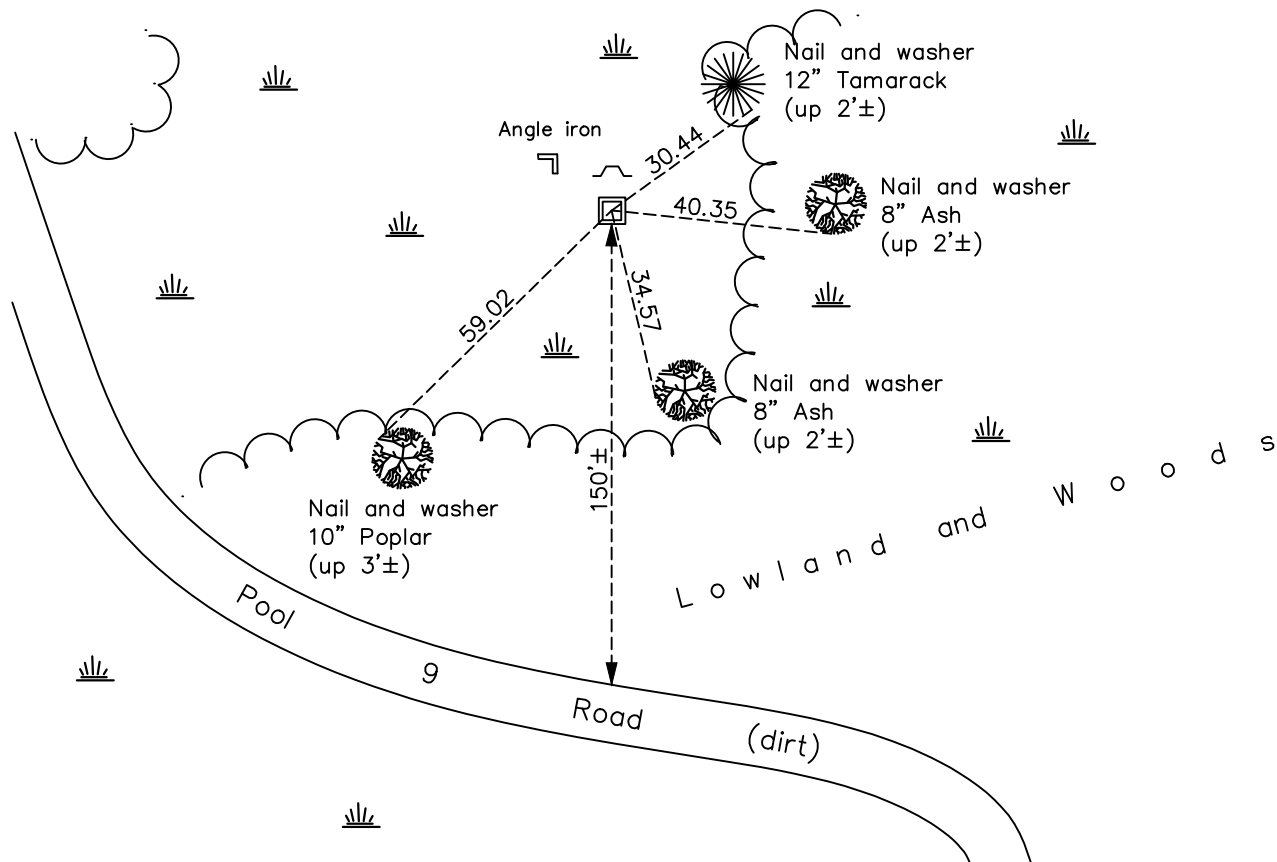
Southeast Corner of Sec. 22 Township 33 Range 22

On the 10th day of September, 1975, the described corner was evidenced by a concrete monument with a steel post

and to perpetuate the location of said corner, at the exact location thereof, a permanent marker was placed consisting of a 2" square telspar monument w/ a sign and post on the north side

AND on the 4th day of January, 2022, said permanent marker was found 2" square telspar mont. w/ 'County Surveyor' cap & punchmark. Ties updated, sign & post north side.

Updated reference ties are as shown below.



Revision Date

03/21/22

N.A.D. 1983 Coordinates
(1996 Adjustment)

County Project Coordinates

Northing 206041.7561Easting 552931.7478Date 5/25/04

I hereby certify that this United States public land survey monument record is correct and complete to the best of my knowledge and belief.

David Zieglmeier Date 3/26/24

David M. Zieglmeier, Anoka County Surveyor
Minnesota License Number 46179

HISTORY OF GOVERNMENT CORNER

Page No. 96

County of Anoka

State of Minnesota

Southeast Corner of Sec. 22 Township 33 Range 22

CORNER HISTORY:

September 10, 1975 - Found concrete monument up 1'± and established ties to monument.

February 19, 1986 - Found concrete monument and updated ties.

August 13, 1987 - Found concrete monument and updated ties.

May 25, 2004 - Established NAD 1983 (1996 adj.) Anoka County project coordinates by static GPS methods.

July 4, 2004 - Found concrete monument leaning northwesterly with top half of monument above ground.
Updated ties.

January 10, 2014 - Found concrete monument halfway above ground, leaning NW a lot and in need of a reset.

February 17, 2016 - Set temporary spike and verified position by static GPS methods.

February 18, 2016 - Found temporary spike and replaced with a 2" x 8' square steel telspar with "County Surveyor" cap and punch mark using static GPS methods. Updated ties.

January 4, 2022 - Found 2" square telspar. Verified position by VRS GPS methods. Updated ties.