

CERTIFICATE OF LOCATION OF GOVERNMENT CORNER

County of Anoka

State of Minnesota

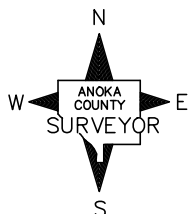
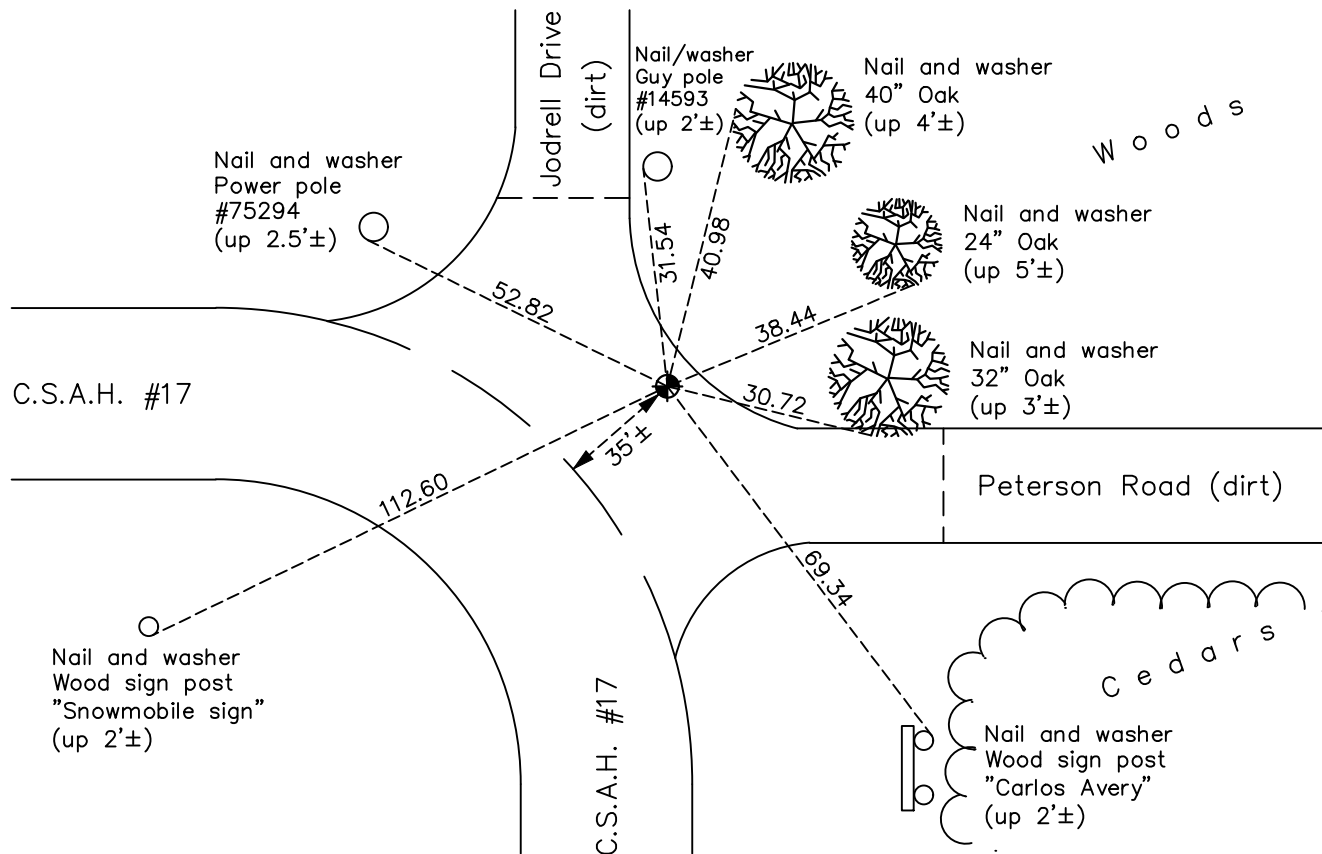
Northeast Corner of Sec. 30 Township 33 Range 22

On the 23rd day of August, 1966, the described corner was evidenced by an iron pipe set by N.C. Hoium

and to perpetuate the location of said corner, at the exact location thereof, a permanent marker was placed consisting of a cast iron monument

AND on the 12th day of April, 2019, said permanent marker was found down 1'± and raised flush with blacktop road. Verified position by VRS GPS methods and the ties were updated.

Updated reference ties are as shown below.



Revision Date

6/22/21

N.A.D. 1983 Coordinates
(1996 Adjustment)

County Project Coordinates	
Northing	<u>206143.4410</u>
Easting	<u>536931.6409</u>
Date	<u>7/01/03</u>

I hereby certify that this United States public land survey monument record is correct and complete to the best of my knowledge and belief.

David M Zieglmeier Date 8/27/21

David Zieglmeier Anoka County Surveyor
Minnesota License Number 46179

HISTORY OF GOVERNMENT CORNER

Page No. 101

County of Anoka

State of Minnesota

Northeast Corner of Sec. 30 Township 33 Range 22

CORNER HISTORY:

September 12, 1962 - Set angle iron and established ties to iron by N.C. Hoium.

August 23, 1966 - Found iron set by N.C. Hoium and replaced with a cast iron monument flush. Updated ties.

July 3, 1967 - Found cast iron monument and updated ties.

June 25, 1971 - Found cast iron monument and updated ties.

July 29, 1975 - Found cast iron monument and updated ties.

July 28, 1978 - Found cast iron monument and updated ties.

August 12, 1981 - Found cast iron monument and updated ties.

August 24, 1984 - Found cast iron monument down 0.5'± and updated ties.

December 2, 1988 - Found cast iron monument down 0.5'± and updated ties.

June 14, 1993 - Found cast iron monument and updated ties.

July 1, 2003 - Established NAD 1983 (1996 adj.) Anoka County project coordinates by static GPS methods.

April 23, 2014 - Found cast iron monument down 1'±. Verified position by VRS GPS methods. Updated ties.

June 11, 2014 - Found cast iron monument and verified position by VRS GPS methods.

April 12, 2019 - Found cast iron monument down 1'±. Verified position by VRS GPS methods. Updated ties.
Raised flush with blacktop road on 4/23/19.