

# CERTIFICATE OF LOCATION OF GOVERNMENT CORNER

County of Anoka

State of Minnesota

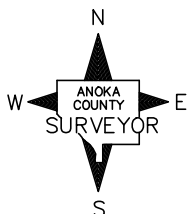
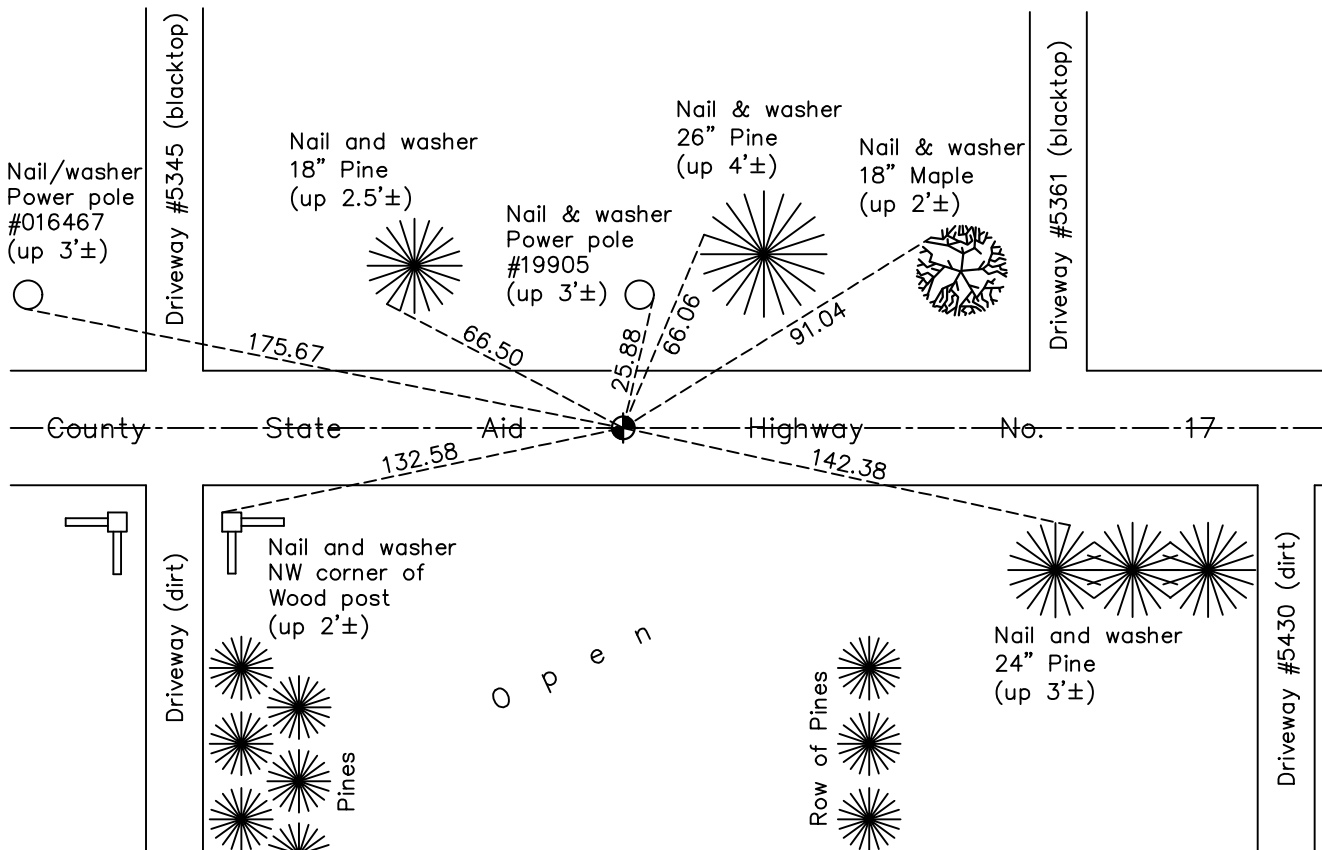
## North 1/4 Corner of Sec. 30 Township 33 Range 22

On the 12th day of September, 1962, the described corner was evidenced by an iron pipe  
set by N.C. Hoium

and to perpetuate the location of said corner, at the exact location thereof, a permanent marker  
 was placed consisting of a cast iron monument

AND on the 12th day of April, 2019, said permanent marker was found flush and the  
ties were updated

Updated reference ties are as shown below.



Revision Date

6/13/19

N.A.D. 1983 Coordinates  
(1996 Adjustment)

County Project Coordinates	
Northing	<u>206155.3437</u>
Easting	<u>534272.2630</u>
Date	<u>7/02/03</u>

I hereby certify that this United States public land survey monument record is correct and complete to the best of my knowledge and belief.

*David M Zieglmeier* Date 8/27/21

David Zieglmeier Anoka County Surveyor  
 Minnesota License Number 46179

# HISTORY OF GOVERNMENT CORNER

Page No. 103

County of Anoka

State of Minnesota

## North 1/4 Corner of Sec. 30 Township 33 Range 22

### **CORNER HISTORY:**

September 12, 1962 - Set iron pipe and established ties to iron pipe by N.C. Hoium.

August 23, 1966 - Found iron pipe set by N.C. Hoium and replaced with a cast iron monument flush. Updated ties.

July 3, 1967 - Found cast iron monument and updated ties.

June 25, 1971 - Found cast iron monument and updated ties.

July 29, 1975 - Found cast iron monument and updated ties.

July 28, 1978 - Found cast iron monument and updated ties.

August 11, 1981 - Found cast iron monument and updated ties.

August 5, 1987 - Found cast iron monument and updated ties.

April 22, 1996 - Raised cast iron monument flush and updated ties.

July 2, 2003 - Established NAD 1983 (1996 adj.) Anoka County project coordinates by static GPS methods.

February 12, 2014 - Found cast iron monument and updated ties.

June 11, 2014 - Found cast iron monument, verified position by VRS GPS methods, updated ties and loosened monument top prior to road overlay.

October 6, 2014 - Raised cast iron monument flush after road overlay.

April 12, 2019 - Found cast iron monument flush. Verified position by VRS GPS methods. Updated ties.