

# CERTIFICATE OF LOCATION OF GOVERNMENT CORNER

County of Anoka

State of Minnesota

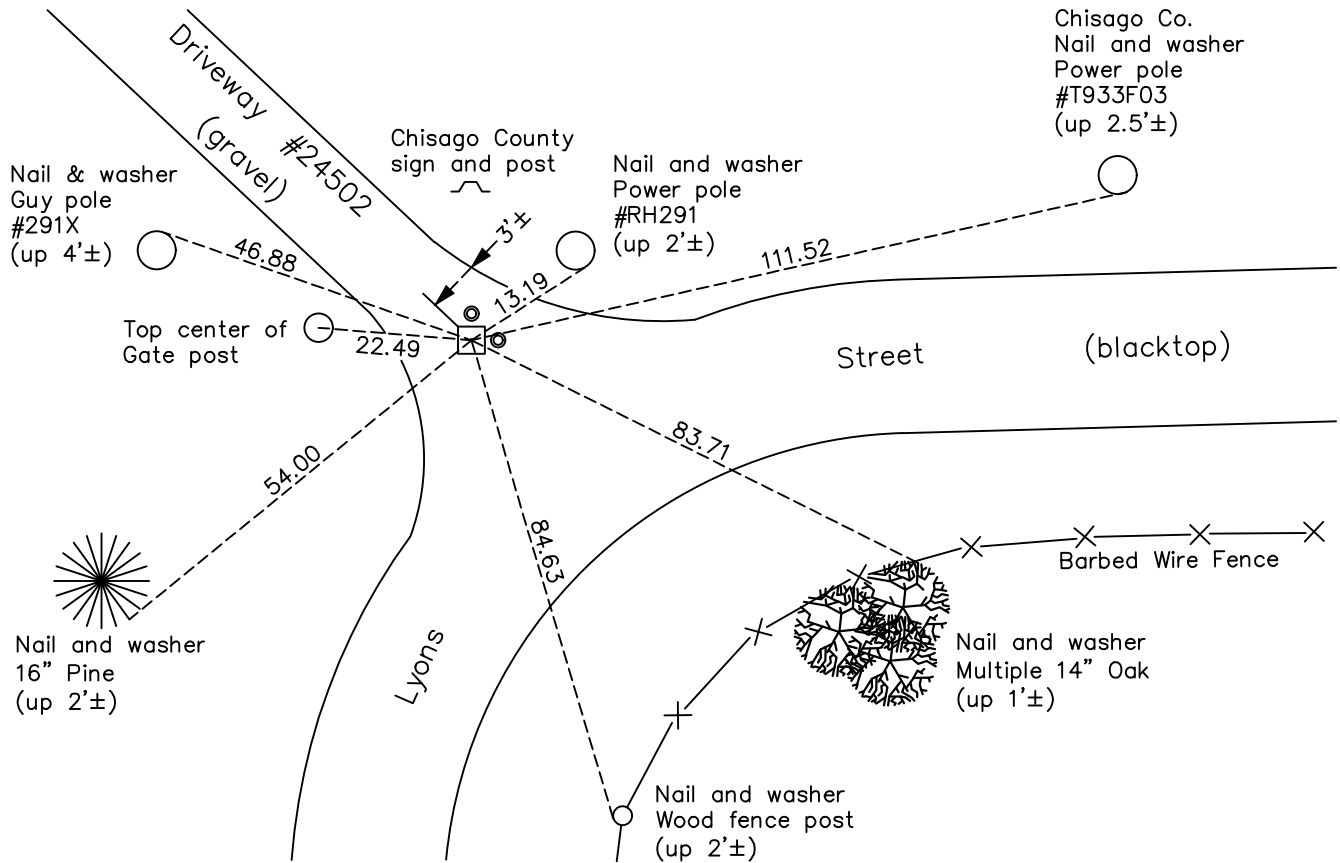
## Northeast Corner of Sec. 25 Township 34 Range 22

On the 16th day of April, 1964, the described corner was evidenced by a sandstone monument

and to perpetuate the location of said corner, at the exact location thereof, a permanent marker was placed consisting of the same sandstone monument with 1/2" iron pipes on the north and east sides

AND on the 14th day of December, 2021, said permanent marker was found rebar rod down 0.4'± in position of center on sandstone monument. Updated ties.

Updated reference ties are as shown below.



Revision Date  
01/26/2022

N.A.D. 1983 Coordinates  
(1996 Adjustment)

County Project Coordinates	
Northing	<u>237364.8326</u>
Easting	<u>563461.7493</u>
Date	<u>6/05/03</u>

I hereby certify that this United States public land survey monument record is correct and complete to the best of my knowledge and belief.

*David Zieglmeier* Date 3/22/24

David Zieglmeier Anoka County Surveyor  
Minnesota License Number 46179

# HISTORY OF GOVERNMENT CORNER

Page No. 1

County of Anoka

State of Minnesota

## Northeast Corner of Sec. 25 Township 34 Range 22

### **CORNER HISTORY:**

April 16, 1964 - Found a sandstone monument with 1/2" hole drilled in center of stone. 2" and 1/2" iron pipes alongside sandstone. Updated ties to monument.

August 17, 1966 - Found sandstone monument and updated ties.

June 20, 1967 - Found sandstone monument down 1'± and updated ties.

July 14, 1971 - Found sandstone monument and updated ties.

August 1, 1975 - Found sandstone monument and updated ties.

August 8, 1978 - Found sandstone monument and updated ties.

August 27, 1981 - Found sandstone monument down 1'± and updated ties.

October 17, 1990 - Found sandstone monument and updated ties.

June 14, 1993 - Found sandstone monument down 1'± and updated ties.

June 5, 2003 - Found sandstone monument down 1'± with a 1/2" iron pipe on the north side and updated ties. Established NAD 1983 (1996 adj.) Anoka County project coordinates by static GPS methods.

April 25, 2014 - Found sandstone monument down 1.5'± with 1/2" iron pipes on the north and east sides. Verified position by VRS GPS methods. Updated ties.

April 10, 2019 - Found sandstone monument down 1.5'± with 1/2" iron pipes on the north and east sides. Verified position by VRS GPS methods. Updated ties.

December 14, 2021 - Found rebar rod down 0.4'± in position of center on sandstone monument, verified position by VRS GPS method. Updated ties.