

CERTIFICATE OF LOCATION OF GOVERNMENT CORNER

County of Anoka

State of Minnesota

Witness Corner of Sec. 25 Township 34 Range 22

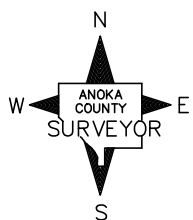
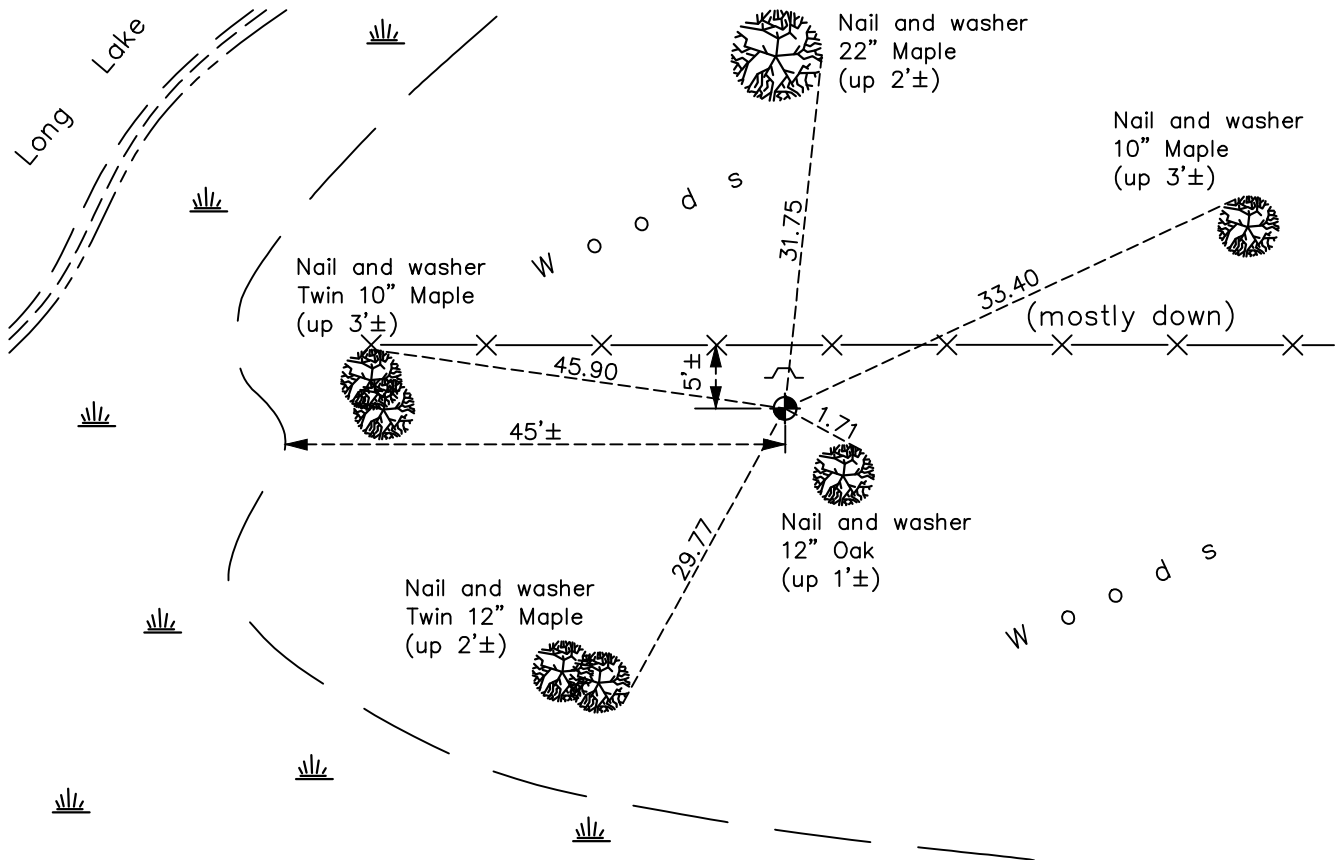
(on north line of NE 1/4)

On the 4th day of June, 1975, the described corner was evidenced by area resurvey

and to perpetuate the location of said corner, at the exact location thereof, a permanent marker was placed consisting of a cast iron monument with a sign and post on the north side

AND on the 31st day of March, 2022, said permanent marker was found flush and the ties were updated

Updated reference ties are as shown below.



Revision Date
4/07/2022

N.A.D. 1983 Coordinates
 (1996 Adjustment)

County Project Coordinates	
Northing	<u>237414.2399</u>
Easting	<u>561258.4650</u>
Date	<u>4/21/05</u>

I hereby certify that this United States public land survey monument record is correct and complete to the best of my knowledge and belief.

David Zieglmeier Date 3/22/24

David Zieglmeier Anoka County Surveyor
 Minnesota License Number 46179

HISTORY OF GOVERNMENT CORNER

Page No. 2

County of Anoka

State of Minnesota

Witness Corner of Sec. 25 Township 34 Range 22
(on north line of NE 1/4)

CORNER HISTORY:

June 4, 1975 - Set cast iron monument using area resurvey and established ties to monument.

July 12, 1993 - Found cast iron monument and updated ties.

April 21, 2005 - Established NAD 1983 (1996 adj.) Anoka County project coordinates by static GPS methods.

May 2, 2014 - Found cast iron monument and updated ties.

May 10, 2019 - Found cast iron monument flush and updated ties.

March 31, 2022 - Found cast iron monument flush, verified location by VRS GPS method and updated ties.