

# CERTIFICATE OF LOCATION OF GOVERNMENT CORNER

County of Anoka

State of Minnesota

## Witness Corner of Sec. 25 Township 34 Range 22

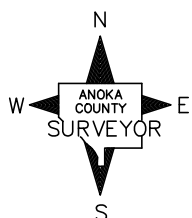
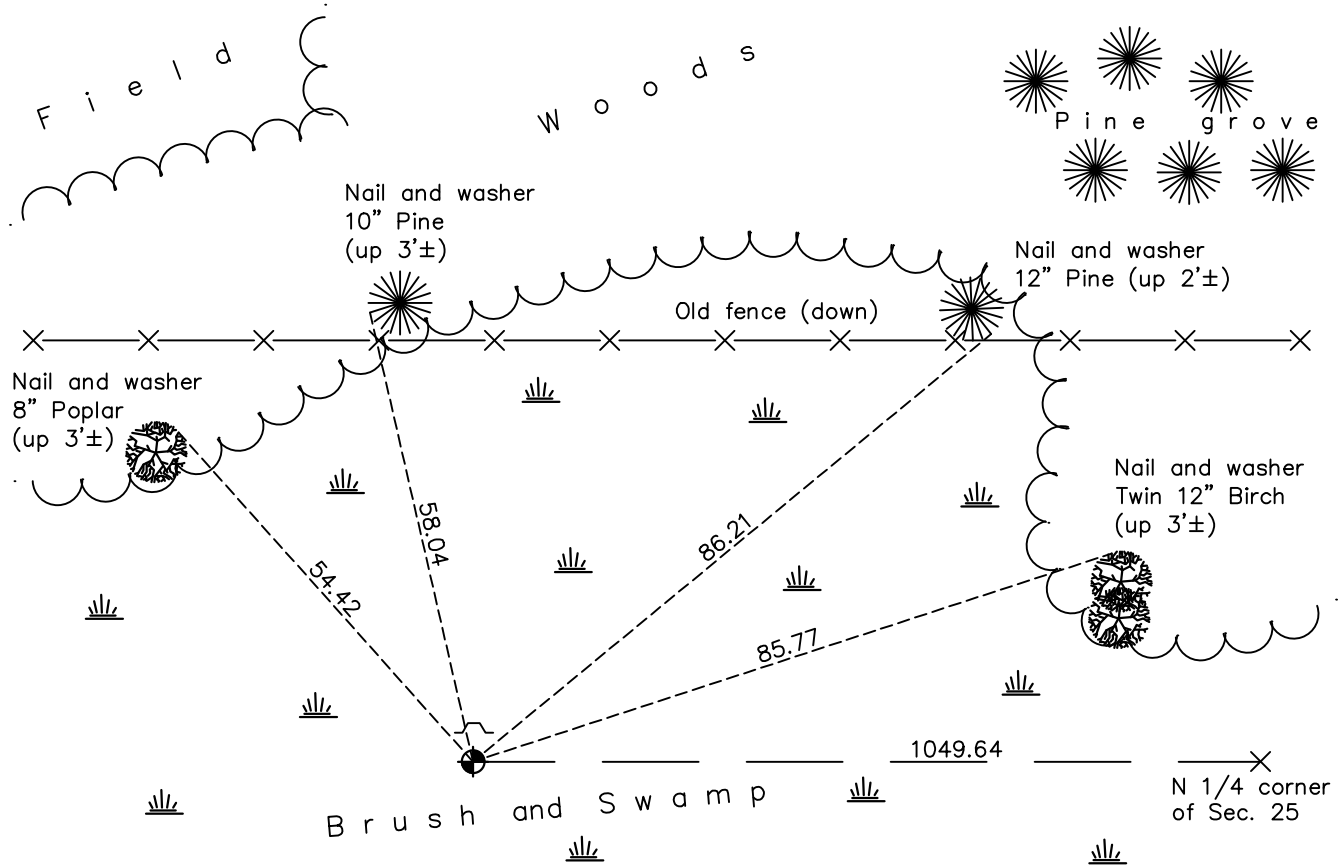
(on north line of NW 1/4)

On the 28th day of May, 1975, the described corner was evidenced by area resurvey

and to perpetuate the location of said corner, at the exact location thereof, a permanent marker was placed consisting of a cast iron monument with a sign and post on the north side

AND on the 16th day of February, 2022, said permanent marker was found down 0.4'± and the ties were updated

Updated reference ties are as shown below.



N.A.D. 1983 Coordinates  
(1996 Adjustment)

County Project Coordinates	
Northing	<u>237447.5807</u>
Easting	<u>559760.3235</u>
Date	<u>3/18/04</u>

I hereby certify that this United States public land survey monument record is correct and complete to the best of my knowledge and belief.

David Zieglsmeier Date 3/22/24

David M. Zieglsmeier, Anoka County Surveyor  
Minnesota License Number 46179

Revision Date

03/16/22

# HISTORY OF GOVERNMENT CORNER

Page No. 3

County of Anoka

State of Minnesota

Witness Corner of Sec. 25 Township 34 Range 22  
(on north line of NW 1/4)

## **CORNER HISTORY:**

May 28, 1975 - Set cast iron monument using area resurvey and established ties to monument.

August 8, 1978 - Found cast iron monument and updated ties.

June 15, 1982 - Found cast iron monument and updated ties.

August 14, 1986 - Found cast iron monument and updated ties.

July 1, 1993 - Found cast iron monument and updated ties.

March 18, 2004 - Established NAD 1983 (1996 adj.) Anoka County project coordinates by static GPS methods.

April 25, 2014 - Found cast iron monument, verified position by VRS GPS methods and updated ties.

February 16, 2022 - Found cast iron monument down 0.4'±, verified position by VRS GPS methods and updated ties.