

CERTIFICATE OF LOCATION OF GOVERNMENT CORNER

County of Anoka

State of Minnesota

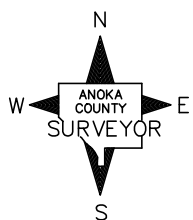
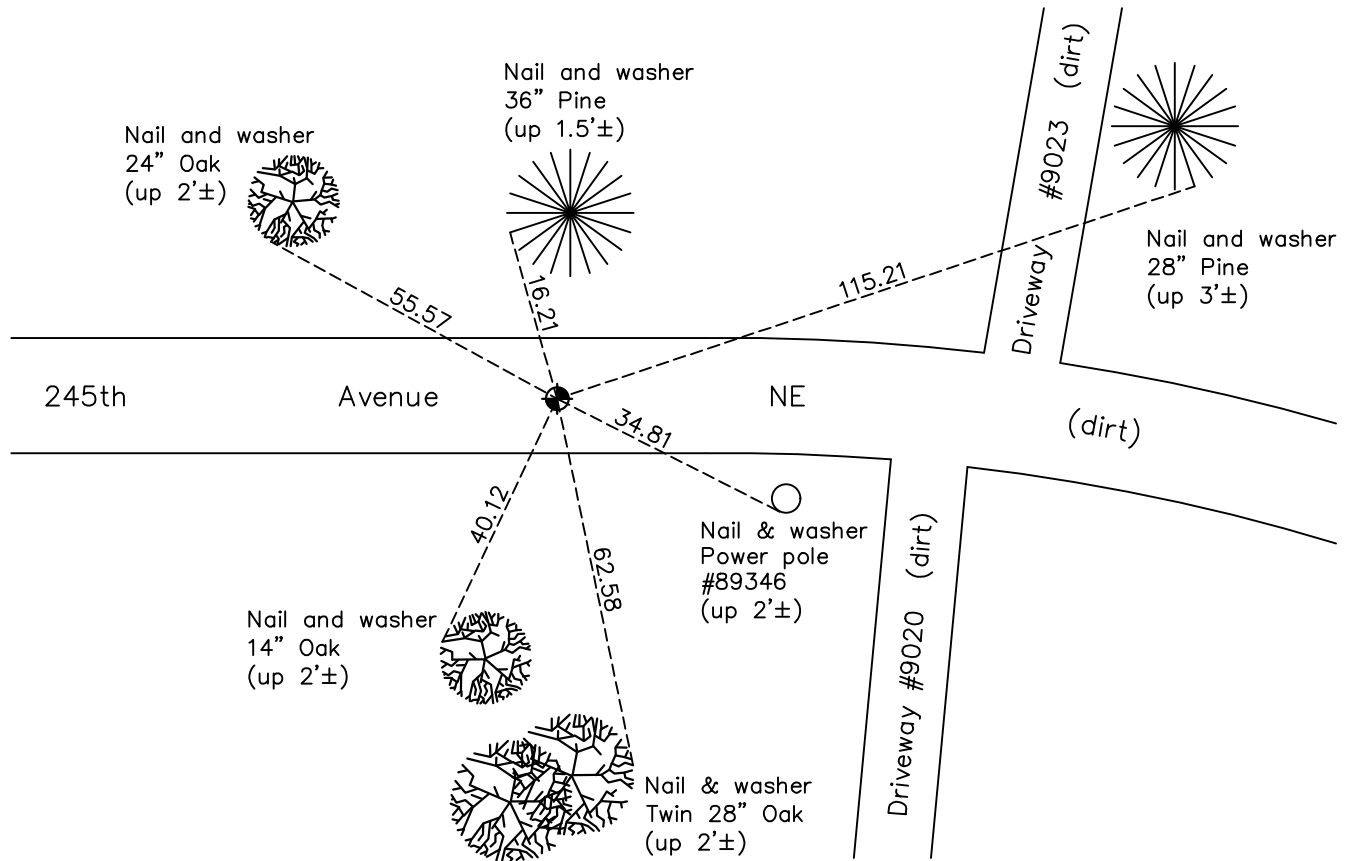
Northeast Corner of Sec. 26 Township 34 Range 22

On the 16th day of April, 1975, the described corner was evidenced by an Isanti
County monument

and to perpetuate the location of said corner, at the exact location thereof, a permanent marker
was placed consisting of a cast iron monument

AND on the 15th day of December, 2021, said permanent marker was found down 0.6'± and
the ties were updated

Updated reference ties are as shown below.



Revision Date
01/26/2022

N.A.D. 1983 Coordinates
 (1996 Adjustment)

County Project Coordinates	
Northing	<u>237482.8442</u>
Easting	<u>558181.7924</u>
Date	<u>1/12/04</u>

I hereby certify that this United States public land survey monument record is correct and complete to the best of my knowledge and belief.
David Zieglmeier Date 3/22/24
 David Zieglmeier Anoka County Surveyor
 Minnesota License Number 46179

HISTORY OF GOVERNMENT CORNER

Page No. 4

County of Anoka

State of Minnesota

Northeast Corner of Sec. 26 Township 34 Range 22

CORNER HISTORY:

April 16, 1975 - Found Isanti County cast iron monument down 1'± set by N.C. Hoium. Updated ties.

August 8, 1978 - Found cast iron monument and updated ties.

June 9, 1982 - Found cast iron monument and updated ties.

August 14, 1986 - Found cast iron monument and updated ties.

July 1, 1993 - Found cast iron monument and updated ties.

January 12, 2004 - Established NAD 1983 (1996 adj.) Anoka County project coordinates by static GPS methods.

April 25, 2014 - Found cast iron monument down 1'± and updated ties.

April 10, 2019 - Found cast iron monument down 1'± and updated ties.

December 15, 2021 - Found cast iron monument down 0.6'±, verified position by VRS GPS method and updated ties.