

CERTIFICATE OF LOCATION OF GOVERNMENT CORNER

County of Anoka

State of Minnesota

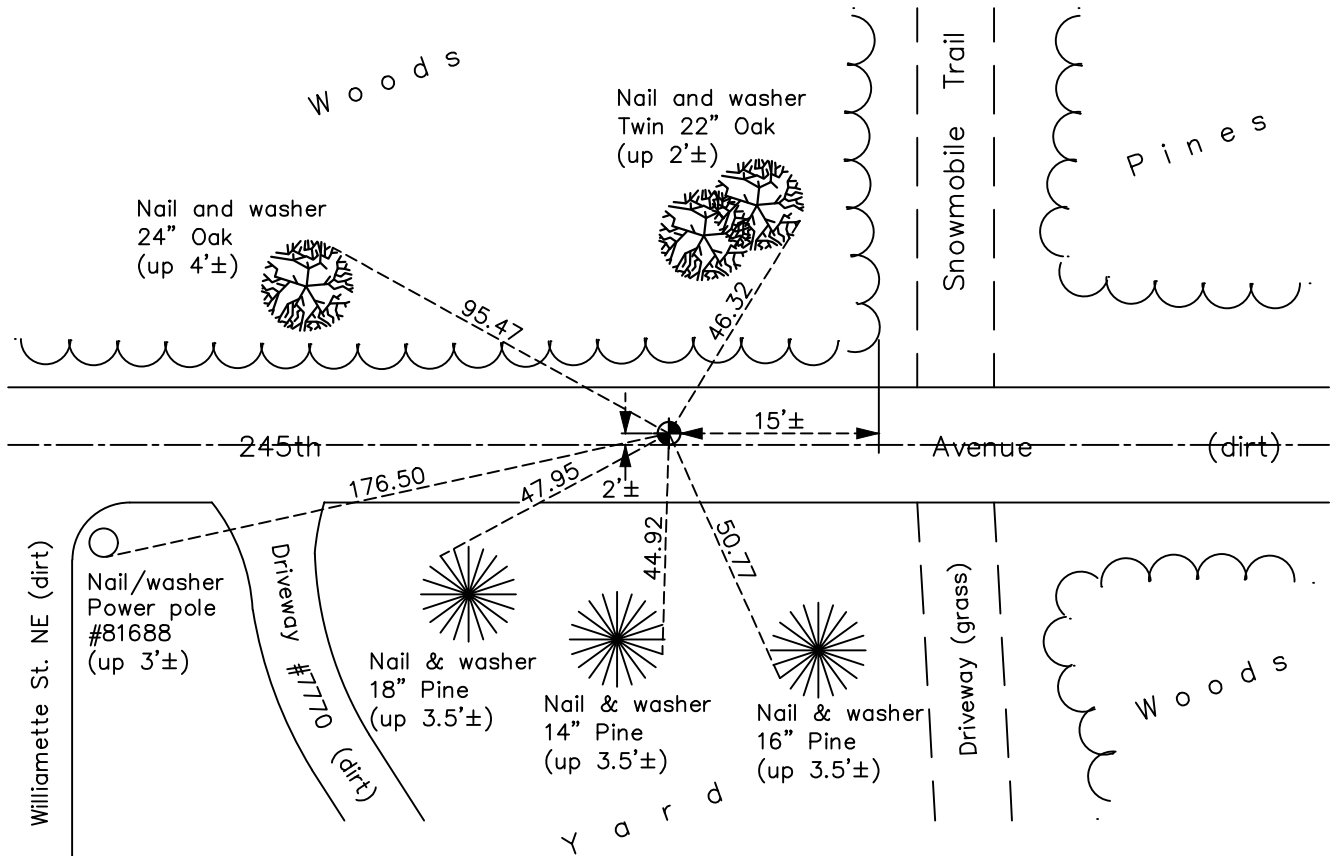
North $\frac{1}{4}$ Corner of Sec. 27 Township 34 Range 22

On the 1st day of May, 1975, the described corner was evidenced by area resurvey

and to perpetuate the location of said corner, at the exact location thereof, a permanent marker was placed consisting of a cast iron monument

AND on the 14h day of December, 2021, said permanent marker was found down 1.5'± and the ties were updated

Updated reference ties are as shown below.



Revision Date
01/26/2022

N.A.D. 1983 Coordinates
(1996 Adjustment)

County Project Coordinates	
Northing	<u>237691.2625</u>
Easting	<u>550284.6221</u>
Date	<u>6/09/03</u>

I hereby certify that this United States public land survey monument record is correct and complete to the best of my knowledge and belief.

David Zieglmeier Date 3/22/24

David Zieglmeier Anoka County Surveyor
Minnesota License Number 46179

HISTORY OF GOVERNMENT CORNER

Page No. 7

County of Anoka

State of Minnesota

North 1/4 Corner of Sec. 27 Township 34 Range 22

CORNER HISTORY:

May 1, 1975 - Set cast iron monument down 0.5'± using area resurvey and established ties to monument.

August 8, 1978 - Found cast iron monument and updated ties.

June 1, 1982 - Found cast iron monument and updated ties.

August 11, 1986 - Found cast iron monument and updated ties.

July 1, 1993 - Found cast iron monument and updated ties.

June 9, 2003 - Established NAD 1983 (1996 adj.) Anoka County project coordinates by static GPS methods.

April 30, 2014 - Found cast iron monument down 1.5'± and updated ties.

April 5, 2019 - Found cast iron monument down 1.5'±. Verified position by VRS GPS methods. Updated ties.

December 14, 2021 - Found cast iron monument down 1.5'±. Verified position by VRS GPS methods. Updated ties.