

CERTIFICATE OF LOCATION OF GOVERNMENT CORNER

County of Anoka

State of Minnesota

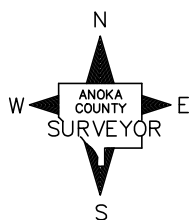
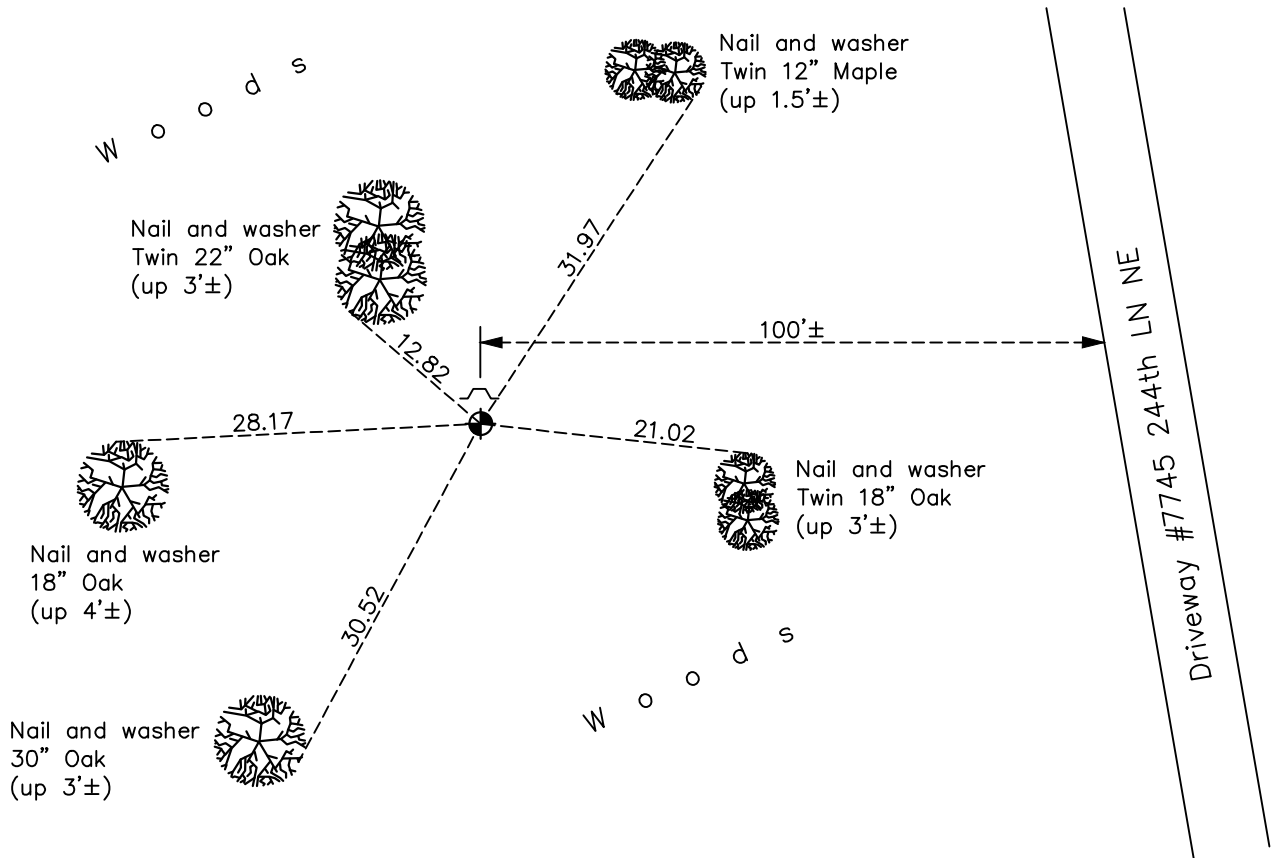
Northwest Corner of Sec. 27 Township 34 Range 22

On the 14th day of July, 1971, the described corner was evidenced by an Isanti County cast iron monument

and to perpetuate the location of said corner, at the exact location thereof, a permanent marker was placed consisting of a cast iron monument with a sign and post on the north side

AND on the 7th day of December, 2021, said permanent marker was found flush and the ties were updated

Updated reference ties are as shown below.



Revision Date

03/14/2022

N.A.D. 1983 Coordinates
(1996 Adjustment)

County Project Coordinates	
Northing	<u>237747.2745</u>
Easting	<u>547628.0739</u>
Date	<u>1/08/04</u>

I hereby certify that this United States public land survey monument record is correct and complete to the best of my knowledge and belief.

David Zieglmeier Date 3/22/24

David M. Zieglmeier, Anoka County Surveyor
Minnesota License Number 46179

HISTORY OF GOVERNMENT CORNER

Page No. 8

County of Anoka

State of Minnesota

Northwest Corner of Sec. 27 Township 34 Range 22

CORNER HISTORY:

July 1960 - Found old rotten post and replaced with iron pipe until position can be checked. Updated ties to iron pipe.

June 21, 1967 - Found iron pipe and updated ties.

July 14, 1971 - Found Isanti County cast iron monument set in place of iron pipe. Updated ties to monument.

August 1, 1975 - Found Isanti County cast iron monument and updated ties.

August 8, 1978 - Found Isanti County cast iron monument and updated ties.

June 2, 1982 - Found Isanti County cast iron monument and updated ties.

August 11, 1986 - Found Isanti County cast iron monument and updated ties.

June 3, 1988 - Found Isanti County cast iron monument and updated ties.

December 29, 1992 - Found Isanti County cast iron monument and updated ties.

January 8, 2004 - Established NAD 1983 (1996 adj.) Anoka County project coordinates by static GPS methods.

February 3, 2014 - Found Isanti County cast iron monument and updated ties.

January 8, 2019 - Found Isanti County cast iron monument flush and updated ties.

December 7, 2021 - Found Isanti County cast iron monument flush. Verified position by VRS GPS methods. Updated ties.