

# CERTIFICATE OF LOCATION OF GOVERNMENT CORNER

County of Anoka

State of Minnesota

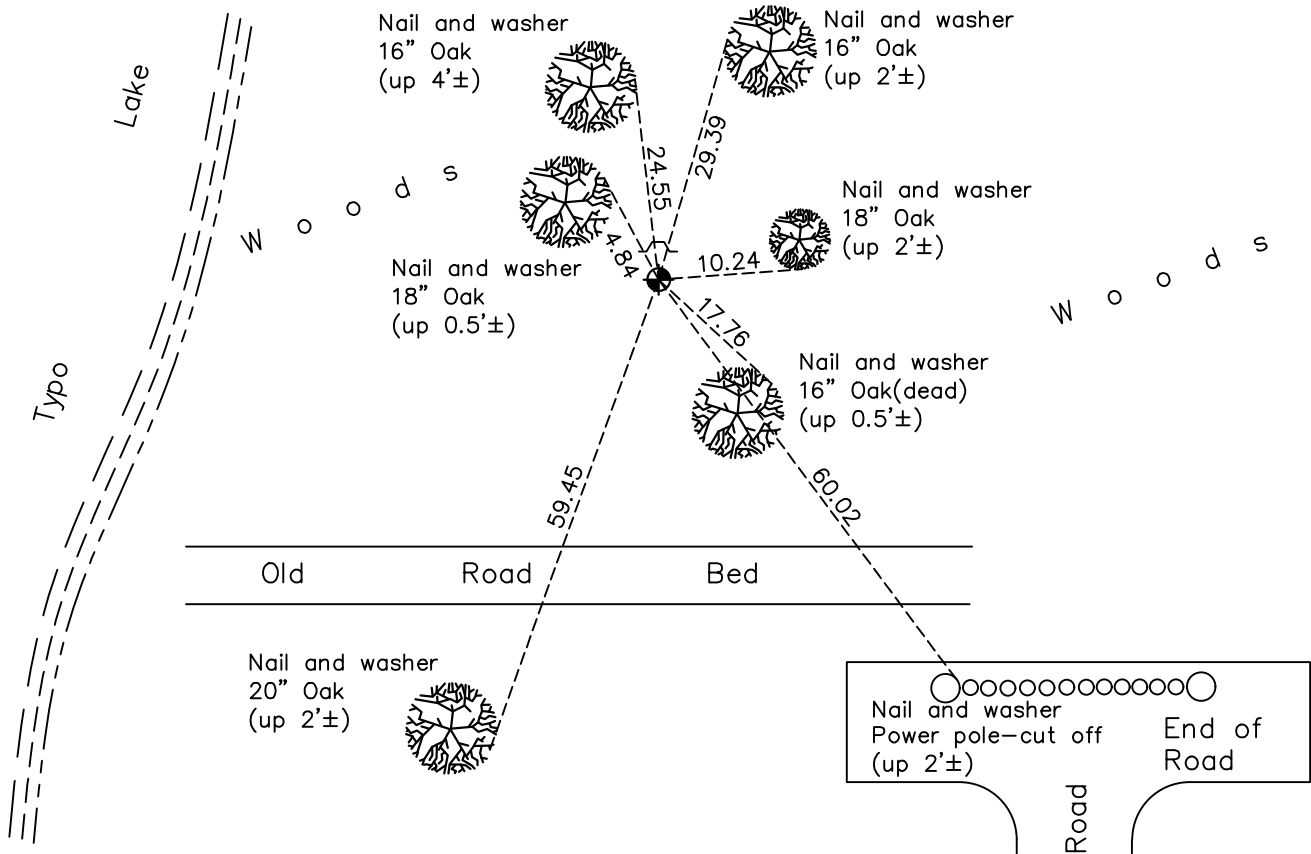
Witness Corner of Sec. 28 Township 34 Range 22  
(on north line of section)

On the 4th day of April, 1979, the described corner was evidenced by area resurvey

and to perpetuate the location of said corner, at the exact location thereof, a permanent marker was placed consisting of a cast iron monument with a sign and post on the north side

AND on the 6th day of December, 2021, said permanent marker was found flush and the ties were updated

Updated reference ties are as shown below.



N  
  
 S

Revision Date  
03/14/2022

N.A.D. 1983 Coordinates  
(1996 Adjustment)

County Project Coordinates	
Northing	<u>237757.7087</u>
Easting	<u>547229.6365</u>
Date	<u>1/06/04</u>

I hereby certify that this United States public land survey monument record is correct and complete to the best of my knowledge and belief.

*David Zieglsmeier* Date 3/22/24

David M. Zieglsmeier, Anoka County Surveyor  
 Minnesota License Number 46179

# HISTORY OF GOVERNMENT CORNER

Page No. 9

County of Anoka

State of Minnesota

Witness Corner of Sec. 28 Township 34 Range 22  
(on north line of section)

## **CORNER HISTORY:**

April 4, 1979 - Set cast iron monument flush using area resurvey and established ties to monument.

June 2, 1982 - Found cast iron monument and updated ties.

August 11, 1986 - Found cast iron monument and updated ties.

June 10, 1993 - Found cast iron monument and updated ties.

January 6, 2004 - Established NAD 1983 (1996 adj.) Anoka County project coordinates by static GPS methods.

January 14, 2014 - Found cast iron monument flush and updated ties.

December 31, 2018 - Found cast iron monument flush and updated ties.

December 6, 2021 - Found cast iron monument flush. Verified position by VRS GPS methods. Updated ties.