

CERTIFICATE OF LOCATION OF GOVERNMENT CORNER

County of Anoka

State of Minnesota

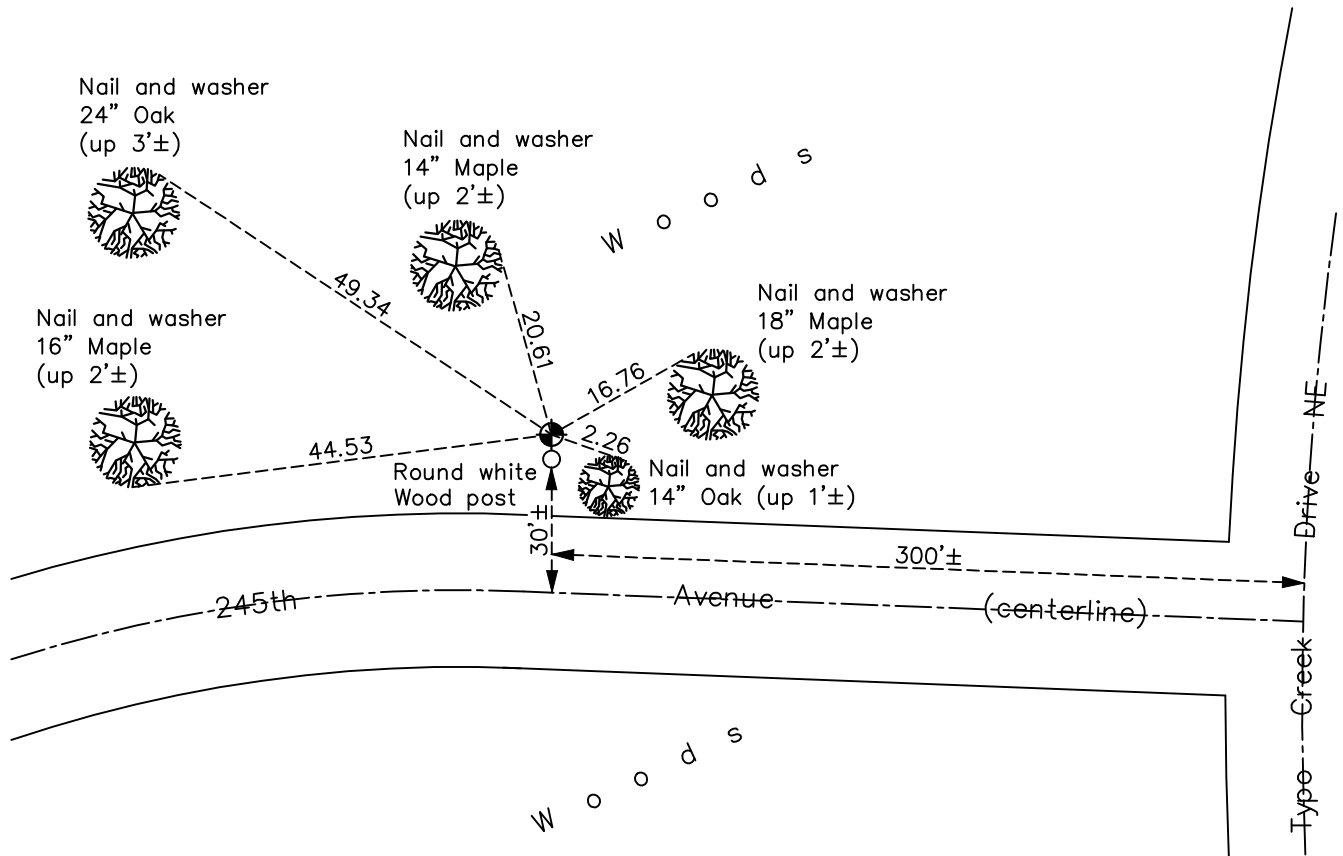
Northwest Corner of Sec. 28 Township 34 Range 22

On the 26th day of April, 1966, the described corner was evidenced by a railroad tie set in 1885

and to perpetuate the location of said corner, at the exact location thereof, a permanent marker was placed consisting of a cast iron monument

AND on the 6th day of December, 2021, said permanent marker was found flush with a round white wood post next to monument on south side and the ties were updated

Updated reference ties are as shown below.



Revision Date
03/14/2022

N.A.D. 1983 Coordinates
 (1996 Adjustment)

County Project Coordinates	
Northing	<u>238049.8854</u>
Easting	<u>542161.8478</u>
Date	<u>1/31/05</u>

I hereby certify that this United States public land survey monument record is correct and complete to the best of my knowledge and belief.

David Zieglermeier Date 3/22/24

David M. Zieglermeier, Anoka County Surveyor
 Minnesota License Number 46179

HISTORY OF GOVERNMENT CORNER

Page No. 11

County of Anoka

State of Minnesota

Northwest Corner of Sec. 28 Township 34 Range 22

CORNER HISTORY:

April 26, 1966 - Found railroad rail on end up 2'± with file mark across center post. Inscribed on rail was S.H.S. 1885 SEC. 20 & 21. Replaced railroad rail with cast iron monument and established ties to monument.

June 21, 1967 - Found cast iron monument and updated ties.

July 9, 1971 - Found cast iron monument and updated ties.

August 1, 1975 - Found cast iron monument and updated ties.

August 8, 1978 - Found cast iron monument and updated ties.

June 9, 1982 - Found cast iron monument and updated ties.

August 13, 1986 - Found cast iron monument and updated ties.

June 6, 1988 - Found cast iron monument up 0.2'± and updated ties.

July 5, 1993 - Found cast iron monument and updated ties.

June 5, 2003 - Found cast iron monument and updated ties.

January 31, 2005 - Established NAD 1983 (1996 adj.) Anoka County project coordinates by static GPS methods.

January 15, 2014 - Found cast iron monument and updated ties.

December 31, 2018 - Found cast iron monument flush and updated ties.

December 6, 2021 - Found cast iron monument flush. Verified position by VRS GPS methods. Updated ties.