

CERTIFICATE OF LOCATION OF GOVERNMENT CORNER

County of Anoka

State of Minnesota

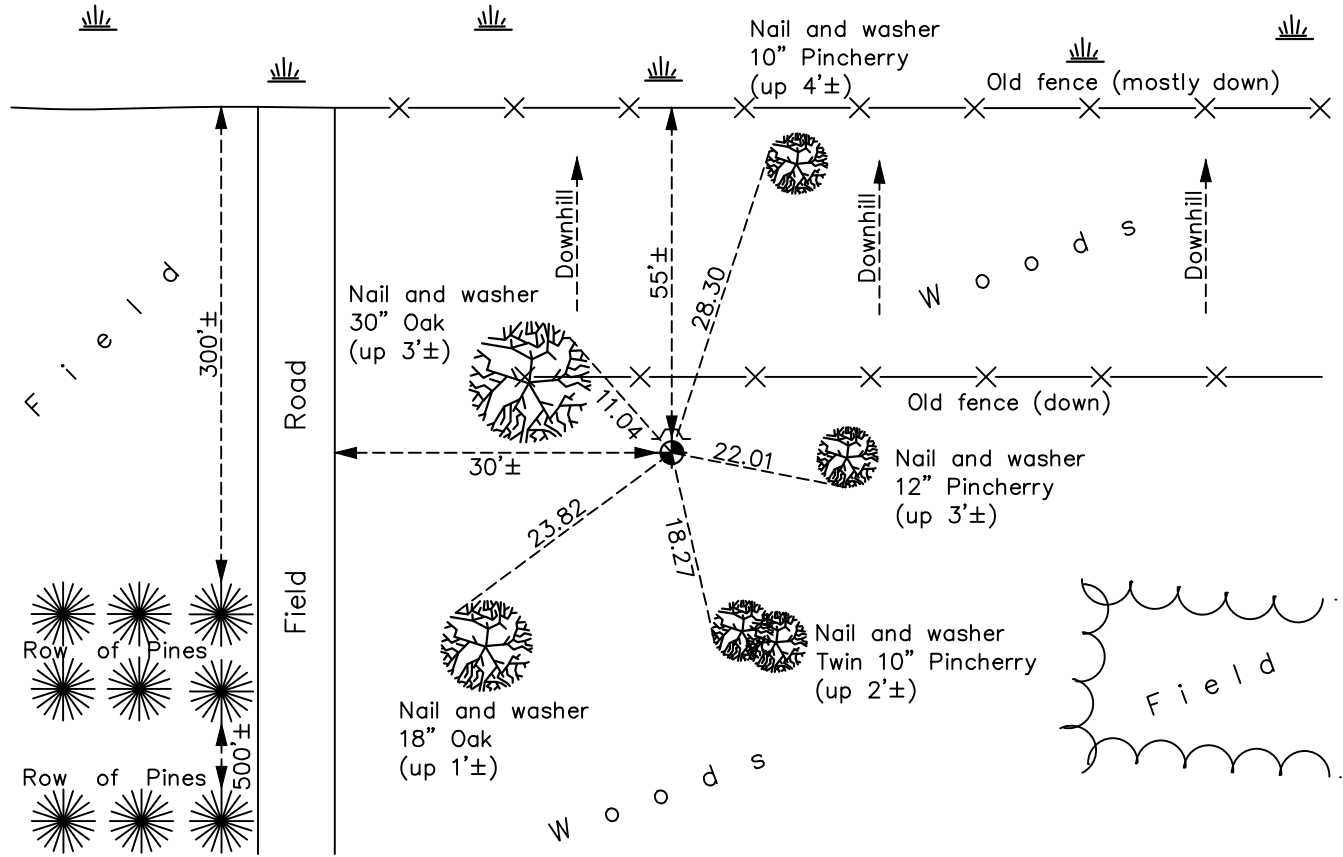
North 1/4 Corner of Sec. 30 Township 34 Range 22

On the 1st day of February, 1979, the described corner was evidenced by area resurvey

and to perpetuate the location of said corner, at the exact location thereof, a permanent marker was placed consisting of a cast iron monument

AND on the 31st day of May, 2023, said permanent marker was found down 0.1'± with a sign and post on the North side and the ties were updated

Updated reference ties are as shown below.



Revision Date
6/13/2023

N.A.D. 1983 Coordinates
 (1996 Adjustment)

County Project Coordinates	
Northing	<u>238022.2224</u>
Easting	<u>534301.1000</u>
Date	<u>5/03/04</u>

I hereby certify that this United States public land survey monument record is correct and complete to the best of my knowledge and belief.
David Zieglmeier Date 6/28/23
 David Zieglmeier Anoka County Surveyor
 Minnesota License Number 46179

HISTORY OF GOVERNMENT CORNER

Page No. 14

County of Anoka

State of Minnesota

North 1/4 Corner of Sec. 30 Township 34 Range 22

CORNER HISTORY:

February 1, 1979 - Set 1/2" iron pipe using area resurvey and established ties to iron pipe.

April 30, 1979 - Found 1/2" iron pipe and replaced with a cast iron monument. Updated ties to monument.

June 9, 1982 - Found cast iron monument and updated ties.

August 13, 1986 - Found cast iron monument and updated ties.

July 12, 1993 - Found cast iron monument and updated ties.

April 27, 2004 - Found cast iron monument and updated ties.

May 3, 2004 - Established NAD 1983 (1996 adj.) Anoka County project coordinates by static GPS methods.

May 7, 2014 - Found cast iron monument and updated ties.

May 31, 2023 - Found cast iron monument down 0.1'± and under fallen tree. Verified position by ACS RTK GPS method and updated ties.