

# CERTIFICATE OF LOCATION OF GOVERNMENT CORNER

County of Anoka

State of Minnesota

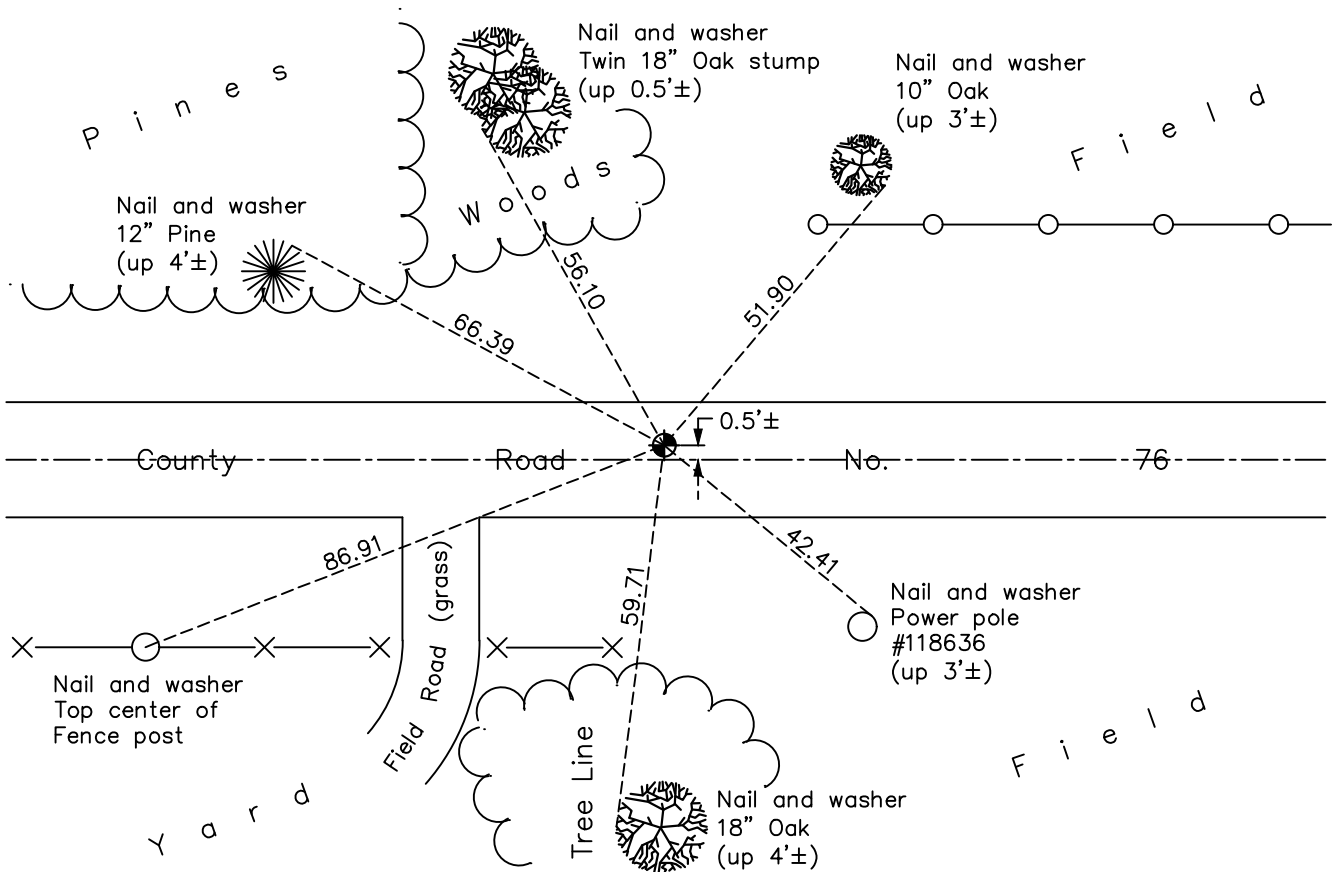
## West 1/4 Corner of Sec. 29 Township 34 Range 22

On the \_\_\_\_ day of October, 1972, the described corner was evidenced by area resurvey

and to perpetuate the location of said corner, at the exact location thereof, a permanent marker was placed consisting of a cast iron monument

AND on the 19th day of May, 2023, said permanent marker was set cast iron monument after road construction, verified position using RTK GPS methods. Updated ties.

Updated reference ties are as shown below.



N.A.D. 1983 Coordinates  
(1996 Adjustment)

County Project Coordinates	
Northing	<u>235401.5114</u>
Easting	<u>537065.7778</u>
Date	<u>6/04/03</u>

I hereby certify that this United States public land survey monument record is correct and complete to the best of my knowledge and belief.

David Zieglmeier Date 6/28/23

David M. Zieglmeier, Anoka County Surveyor  
Minnesota License Number 46179

Revision Date  
5/31/2023

# HISTORY OF GOVERNMENT CORNER

Page No. 16

County of Anoka

State of Minnesota

West 1/4 Corner of Sec. 29 Township 34 Range 22

## **CORNER HISTORY:**

October 1972 - Set cast iron monument using area resurvey. (limited history on setting of monument)

October 3, 1979 - Found cast iron monument down and raised flush with the surface. Established ties to cast iron monument.

8/27/81, 7/31/86, 6/16/93 - Found cast iron monument and updated ties.

June 4, 2003 - Found cast iron monument and updated ties. Established NAD 1983 (1996 adj.) Anoka County project coordinates by static GPS methods.

5/1/14, 1/7/19, 2/17/22 - Found cast iron monument down 0.2'±. Verified position by VRS GPS methods. Updated ties.

May 19, 2023 - set cast iron monument after construction, verified position using RTK GPS method. Updated ties. Job no. 22-131