

CERTIFICATE OF LOCATION OF GOVERNMENT CORNER

County of Anoka

State of Minnesota

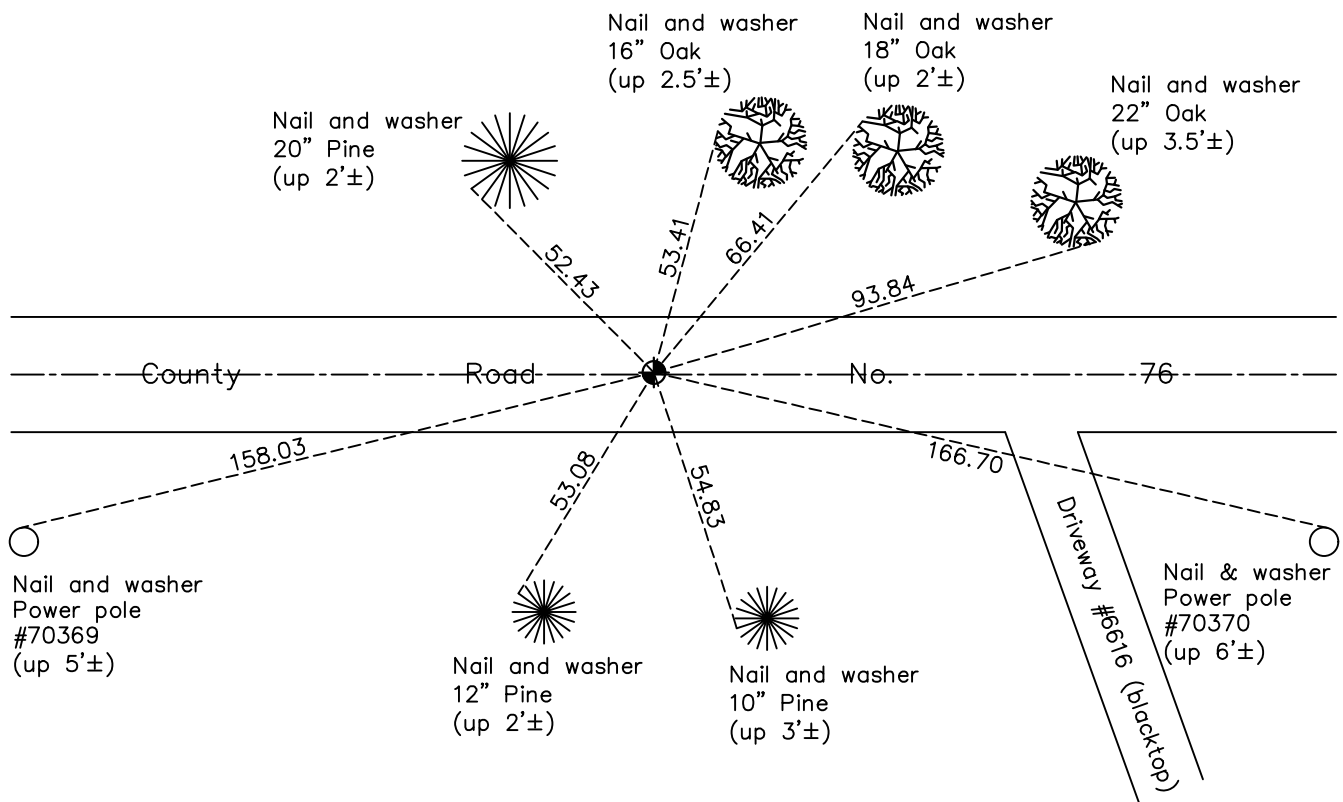
East 1/4 Corner of Sec. 29 Township 34 Range 22

On the 24th day of June, 1958, the described corner was evidenced by Highway
Department ties to stone monument

and to perpetuate the location of said corner, at the exact location thereof, a permanent marker
was placed consisting of a cast iron monument

AND on the 19th day of May, 2023, said permanent marker was set cast iron
monument after road construction, verified position using RTK GPS methods. Updated ties.

Updated reference ties are as shown below.



Revision Date
5/31/2023

N.A.D. 1983 Coordinates
 (1996 Adjustment)

County Project Coordinates	
Northing	<u>235410.8882</u>
Easting	<u>542306.0174</u>
Date	<u>6/03/03</u>

I hereby certify that this United States public land survey monument record is correct and complete to the best of my knowledge and belief.

David Zieglsmeier Date 6/28/23

David M. Zieglsmeier, Anoka County Surveyor
 Minnesota License Number 46179

HISTORY OF GOVERNMENT CORNER

Page No. 17

County of Anoka

State of Minnesota

East 1/4 Corner of Sec. 29 Township 34 Range 22

CORNER HISTORY:

June 24, 1958 - Established ties to stone monument by County Highway Department.

July 23, 1962 - Stone monument not found. Set 3/4" iron pipe flush using County Highway Department ties.

June 21, 1967 - Found iron pipe and updated ties.

September 11, 1969 - Found iron pipe and replaced with a cast iron monument flush. Updated ties.

7/16/71, 8/1/75, 8/9/78 - Found cast iron monument and updated ties.

October 3, 1979 - Found cast iron monument and raised flush. Updated ties.

8/27/81, 8/27/82, 7/13/86, 6/16/93 - Found cast iron monument and updated ties.

June 3, 2003 - Established NAD 1983 (1996 adj.) Anoka County project coordinates by static GPS methods.

5/1/14, 1/7/19, 2/15/22 - Found cast iron monument. Verified position by VRS GPS methods. Updated ties.

May 19, 2023 - set cast iron monument after road construction, verified position using RTK GPS methods.
Updated ties. Job no. 22-131