

CERTIFICATE OF LOCATION OF GOVERNMENT CORNER

County of Anoka

State of Minnesota

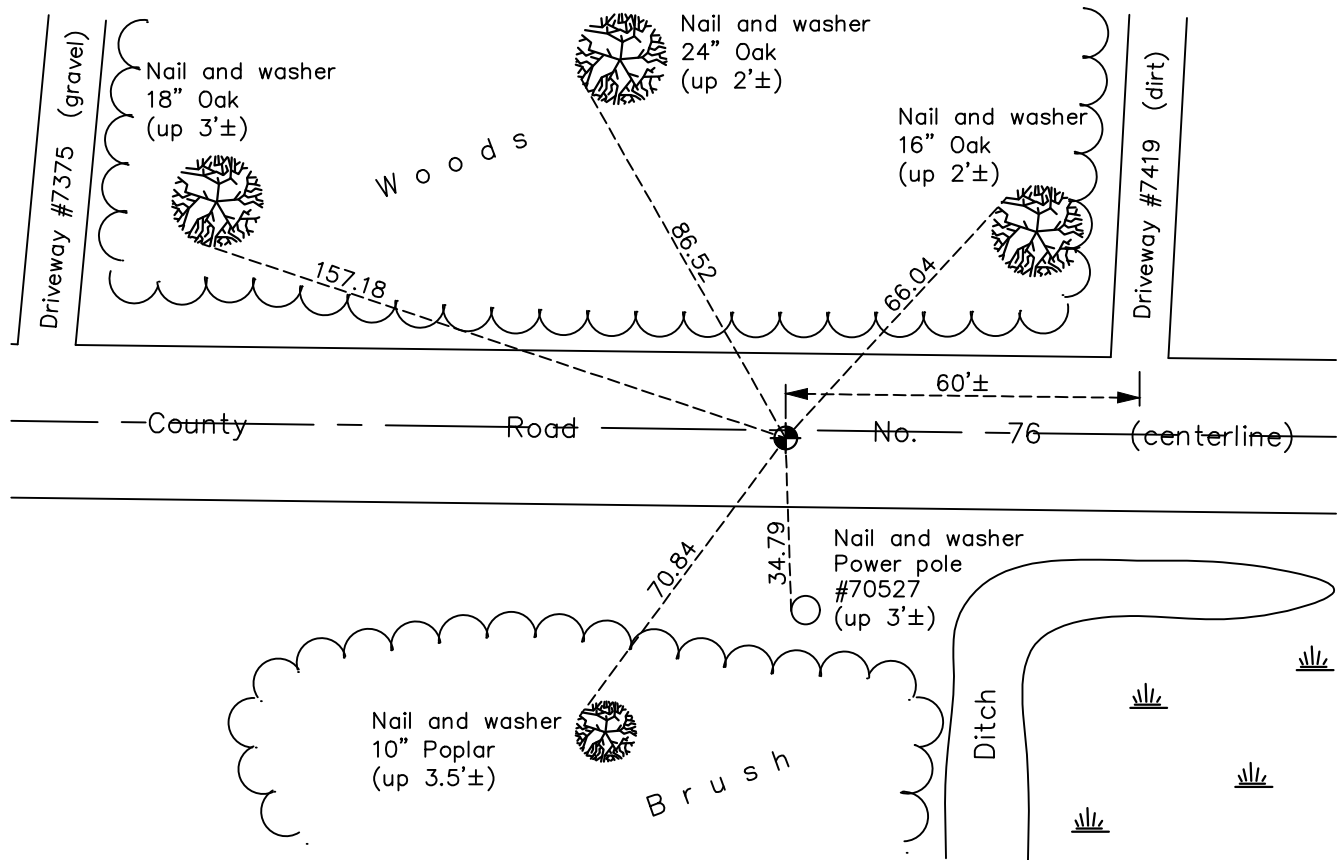
East 1/4 Corner of Sec. 28 Township 34 Range 22

On the 16th day of March, 1967, the described corner was evidenced by area resurvey

and to perpetuate the location of said corner, at the exact location thereof, a permanent marker was placed consisting of a cast iron monument with concrete surround

AND on the 17th day of February, 2022, said permanent marker was found flush to surface
Updated ties.

Updated reference ties are as shown below.



Revision Date

03/14/2022

N.A.D. 1983 Coordinates
(1996 Adjustment)

County Project Coordinates	
Northing	<u>235141.7024</u>
Easting	<u>547682.4807</u>
Date	<u>10/23/03</u>

I hereby certify that this United States public land survey monument record is correct and complete to the best of my knowledge and belief.

David Zieglermeier Date 3/22/24

David M. Zieglermeier, Anoka County Surveyor
Minnesota License Number 46179

HISTORY OF GOVERNMENT CORNER

Page No. 18

County of Anoka

State of Minnesota

East 1/4 Corner of Sec. 28 Township 34 Range 22

CORNER HISTORY:

March 16, 1967 - Set P.K. nail using area resurvey and established ties to P.K. nail.

June 21, 1967 - Found P.K. nail and replaced with a cast iron monument. Updated ties.

July 8, 1971 - Found cast iron monument and updated ties.

August 1, 1975 - Found cast iron monument and updated ties.

August 9, 1978 - Found cast iron monument and updated ties.

October 3, 1979 - Found cast iron monument and raised flush. Updated ties.

August 27, 1981 - Found cast iron monument and updated ties.

August 11, 1986 - Found cast iron monument and updated ties.

June 16, 1993 - Found cast iron monument and updated ties.

May 21, 2003 - Found cast iron monument, set construction ties and updated corner ties prior to road construction. Removed monument.

October 23, 2003 - Reset position with a P.K. nail using construction ties after road construction. Established NAD 1983 (1996 adj.) Anoka County project coordinates by static GPS methods.

November 4, 2003 - Set cast iron monument flush using construction ties. Updated ties.

May 1, 2014 - Found cast iron monument and updated ties.

January 7, 2019 - Found cast iron monument, verified position by VRS GPS methods and updated ties.

June 2, 2020 - Found cast iron monument, verified position by VRS GPS methods and updated corner ties prior to road construction. Removed monument.

July 31, 2020 - Reset cast iron monument flush after road construction using static GPS methods. Verified position by VRS GPS methods and updated ties.

February 17, 2022 - Found cast iron monument flush, verified position by VRS GPS methods and updated ties.